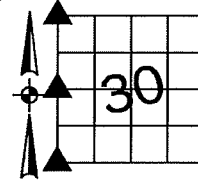


Denise Meeves RECORDER  
 Crawford County, Iowa  
 Instr. Number: 2020-2683  
 Recorded: 12/3/2020 at 9:08:38.0 AM  
 Pages 1  
 County Recording Fee: \$7.00  
 Iowa E-Filing Fee: \$3.13  
 Combined Fee: \$10.13  
 Revenue Tax:

PREPARED BY AND RETURN TO: MIKE SCHULTE, SCHULTE SURVEYING, INC., 2003 390TH STREET, WESTSIDE, IA 51467 (712) 790-3489

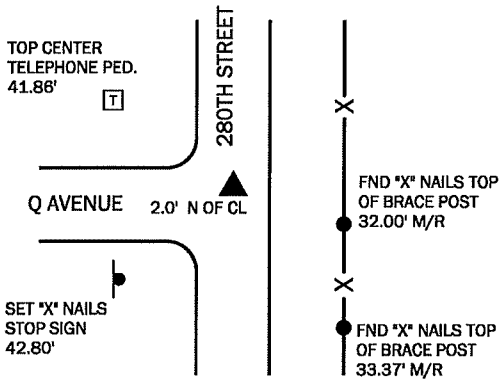
**UNITED STATES PUBLIC LAND SURVEY CORNER CERTIFICATE OF**  
 LAND SURVEY MONUMENTS SITUATED IN SECTION 30, TOWNSHIP 83 NORTH, RANGE 38 WEST, OF THE FIFTH  
 PRINCIPAL MERIDIAN, CRAWFORD COUNTY, IOWA. PREVIOUSLY RECORDED IN SEE BELOW IN COUNTY  
 RECORDER'S OFFICE. (book, page instrument number)



**NORTHWEST CORNER**  
 FND 1" SHAFT 8" DEEP  
 N=7230905.88 E=16611195.33

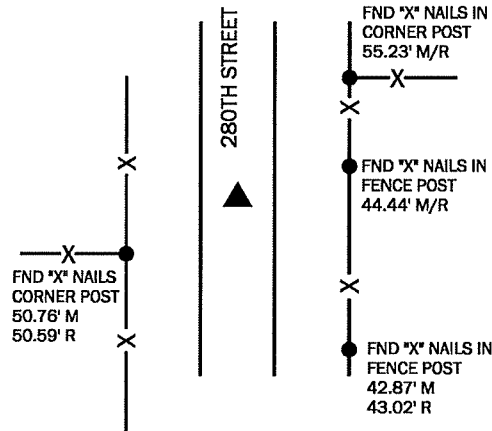
USED CERTIFICATE RECORDED IN DOCUMENT NO. 2001-3689 AND A METAL DETECTOR TO FIND A 1" SHAFT 8" DEEP. VERIFIED FOUND MONUMENT WITH 2 REMAINING TIES AND ACCEPTED AS SECTION CORNER. THIS CORNER CERTIFICATE IS BEING FILED BECAUSE THERE ARE NO LONGER THREE VALID TIES OF RECORD.

\*All distances are measured horizontally unless noted.



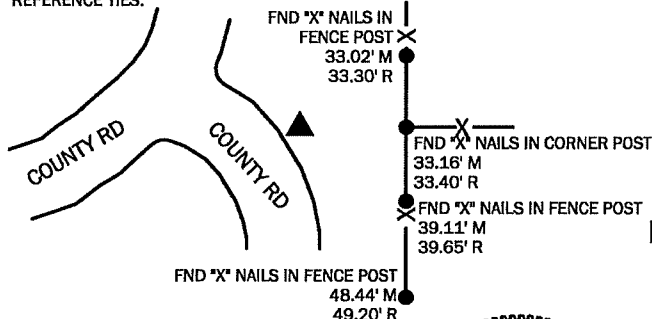
**WEST 1/4 CORNER**  
 FND 1/2" REBAR 3" DEEP  
 N=7228275.33 E=16611221.92

USED CERTIFICATE RECORDED IN DOCUMENT NO. 2007-0542 AND A METAL DETECTOR TO FIND A 1/2" REBAR 3" DEEP. VERIFIED FOUND MONUMENT WITH 4 REMAINING TIES AND ACCEPTED AS SECTION CORNER. THIS CORNER CERTIFICATE IS BEING FILED TO UPDATE THE REFERENCE TIES.



**SOUTHWEST CORNER**  
 FND 1" IRON PIN 12" DEEP  
 N=7225647.00 E=16611245.95

USED CERTIFICATE RECORDED IN DOCUMENT NO. 2007-0543 AND A METAL DETECTOR TO FIND A 1" IRON PIN 12" DEEP. VERIFIED FOUND MONUMENT WITH COUNTY ENGINEER AND PREVIOUS SURVEY AND ACCEPTED AS SECTION CORNER. THIS CORNER CERTIFICATE IS BEING FILED TO UPDATE MONUMENT AND REFERENCE TIES.



**LIST CORNERS TO BE INDEXED**

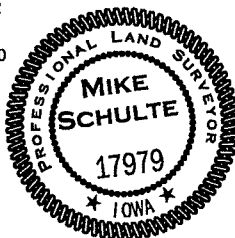
CORNER	SECTION	TWP	RANGE
NW COR	30	83	38
NE COR	25	83	39
SE COR	24	83	39
SW COR	19	83	38
W1/4 COR	30	83	38
E1/4 COR	25	83	39
SW COR	30	83	38
SE COR	25	83	39
NE COR	36	83	39
NW COR	31	83	38

**BASIS OF BEARING**

IaRCS ZONE 6 - US SURVEY FEET  
 IaRTN DERIVED - NAD83(2011) EPOCH 2010.00

I HEREBY CERTIFY THAT THIS LAND SURVEYING DOCUMENT WAS PREPARED BY ME OR UNDER MY DIRECT PERSONAL SUPERVISION AND THAT I AM A DULY LICENSED PROFESSIONAL LAND SURVEYOR UNDER THE LAWS OF THE STATE OF IOWA.

*Mike Schulte*  
 MIKE SCHULTE  
 LICENSE NUMBER: 17979  
 LICENSE RENEWAL DATE IS DECEMBER 31, 2021  
 PAGES COVERED BY THIS SEAL: 1 OF 1



**SCHULTE SURVEYING, INC.**

DRAWN BY: MLS  
 PROJ NUMBER: 20-072