

INDEXED SM
 FOLLOW UP _____
 PROOFED _____
 SCANNED _____

Instrument #: 2021-1549
 07/12/2021 09:39:47 AM Total Pages: 1
 PLC PLAT COR CERT
 Recording Fee: \$7.00 Transfer Tax: \$0
 Denise Reeves, Recorder, Crawford County Iowa



PREPARED BY - JOSEPH P. RUESCHENBERG - SUNDQUIST ENGINEERING - 120 S. MAIN, DENISON, IOWA 51442 - PHONE (712) 263-8118

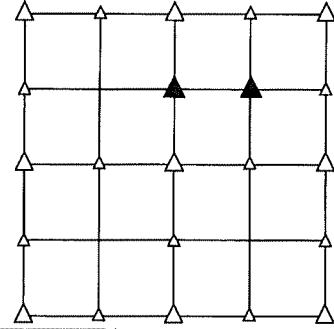
UNITED STATES PUBLIC LAND SURVEY CORNER CERTIFICATE
 OF

LAND SURVEY MONUMENT SITUATED IN SECTION 2, T 83 N, R 39 W OF
 THE 5TH P.M., CRAWFORD COUNTY, IOWA.
 PREVIOUSLY RECORDED IN BOOK _____, PAGE _____, OTHER _____

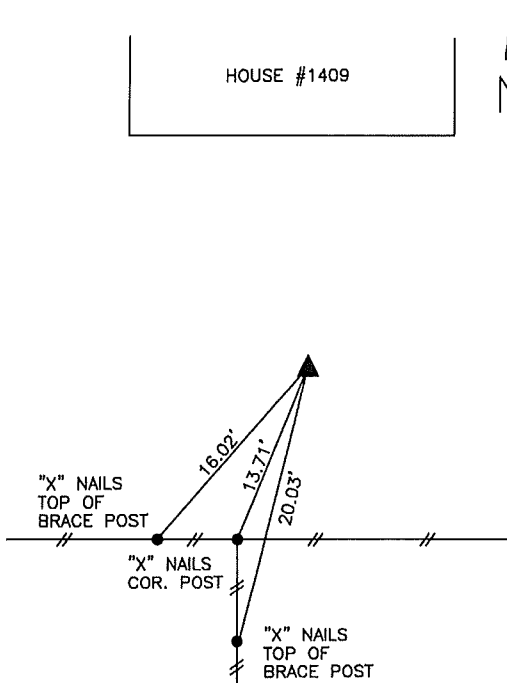
MONUMENT DESCRIPTION AND REMARKS

NW CORNER
 SW1/4 NE1/4 - FOUND IRON PIN W/YELLOW CAP #8893 FLUSH.

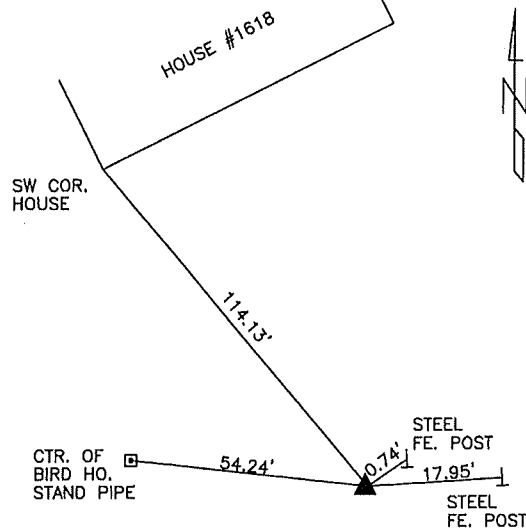
NE CORNER
 SW1/4 NE1/4 - SET 5/8" DIA. X 18" IRON PIN W/ORANGE CAP
 #14709 FLUSH. SET USING PREVIOUS SURVEY
 INFORMATION.



PLAN VIEW SHOWING RELATIVE LOCATION OF MONUMENT AND REFERENCE POINTS.



DISTANCES PLUMB CHAINED
 NW CORNER SW1/4 NE1/4
 SECTION 2-83-39



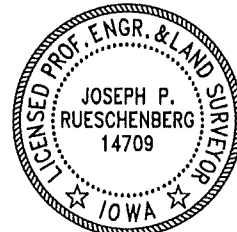
DISTANCES PLUMB CHAINED
 NE CORNER SW1/4 NE1/4
 SECTION 2-83-39

I HEREBY CERTIFY THAT THIS LAND SURVEYING DOCUMENT WAS PREPARED
 AND THE RELATED SURVEY WORK WAS PERFORMED BY ME OR UNDER MY
 DIRECT PERSONAL SUPERVISION AND THAT I AM A DULY LICENSED LAND
 SURVEYOR UNDER THE LAWS OF THE STATE OF IOWA.

Joseph P. Rueschenberg 6-25-2021
 JOSEPH P. RUESCHENBERG DATE

IA LICENSE NO. 14709

EXP. DATE DECEMBER 31, 2022



SE PROJECT NO. 22821
 DRAWN BY: LLL