

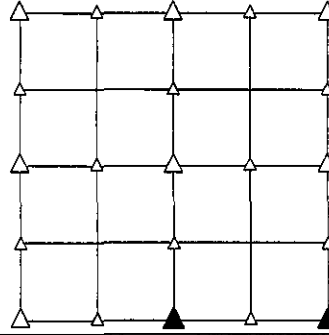
PREPARED BY - TERENCE E. CRAWFORD - SUNDUQUIST ENGINEERING - 120 S. MAIN, DENISON, IOWA 51442 - PHONE (712) 263-8118

**UNITED STATES PUBLIC LAND SURVEY CORNER CERTIFICATE
 OF**

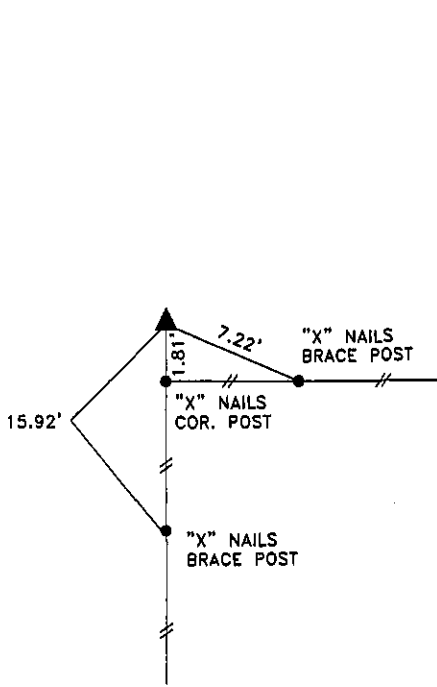
LAND SURVEY MONUMENT SITUATED IN SECTION 19, T 83 N, R 39 W OF
 THE 5TH P.M., CRAWFORD COUNTY, IOWA.
 PREVIOUSLY RECORDED IN BOOK _____, PAGE _____, OTHER _____

MONUMENT DESCRIPTION AND REMARKS

S1/4 CORNER - SET 5/8" DIA. X 18" IRON PIN W/YELLOW CAP
 #8893 2" DEEP, RESET FROM OLD COUNTY TIES.
 SE CORNER - COULD NOT FIND CM, SET 5/8" DIA. X 18" IRON PIN
 W/YELLOW CAP #8893 0.5' DEEP, RESET FROM OLD
 COUNTY TIES.

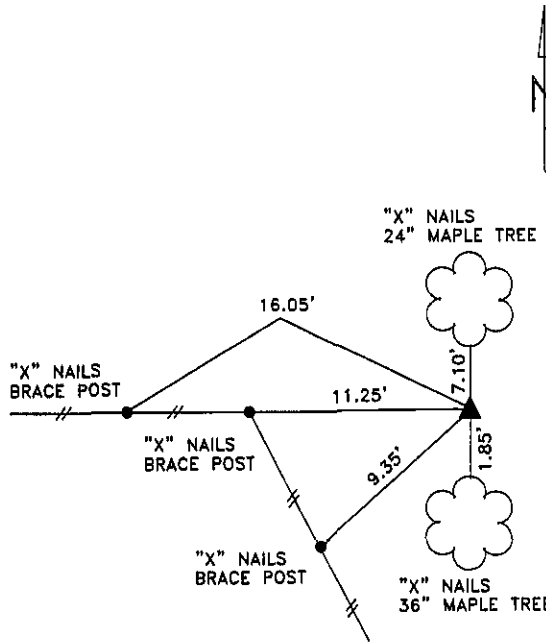


PLAN VIEW SHOWING RELATIVE LOCATION OF MONUMENT AND REFERENCE POINTS.



DISTANCES PLUMB CHAINED

S1/4 CORNER SECTION 19-83-39



DISTANCES PLUMB CHAINED

SE CORNER SECTION 19-83-39

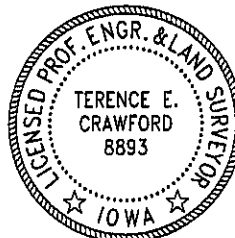
I HEREBY CERTIFY THAT THIS LAND SURVEYING DOCUMENT WAS PREPARED
 AND THE RELATED SURVEY WORK WAS PERFORMED BY ME OR UNDER MY
 DIRECT PERSONAL SUPERVISION AND THAT I AM A DULY LICENSED LAND
 SURVEYOR UNDER THE LAWS OF THE STATE OF IOWA.

Terence E. Crawford

JAN 14 2008

TERENCE E. CRAWFORD
 IA LICENSE NO. 8893

DATE
 EXP. DATE DECEMBER 31, 2009



SE PROJECT NO. 20108
 DRAWN BY: LLL