

PREPARED BY: JANELE FOWLDS  
 DATE: 4/21/09  
 SHEETS: 1  
 TOTAL SHEETS: 1

**COPY**

Crawford County Recorder  
 Denise Meeves  
**Fee Book 2009-1149**  
 04/24/2009 @10:39AM  
 PLC PLAT CORNER CER  
 Book: \_\_\_\_\_ Page: \_\_\_\_\_ # Pages: 1  
 Total Fees: \$7.00

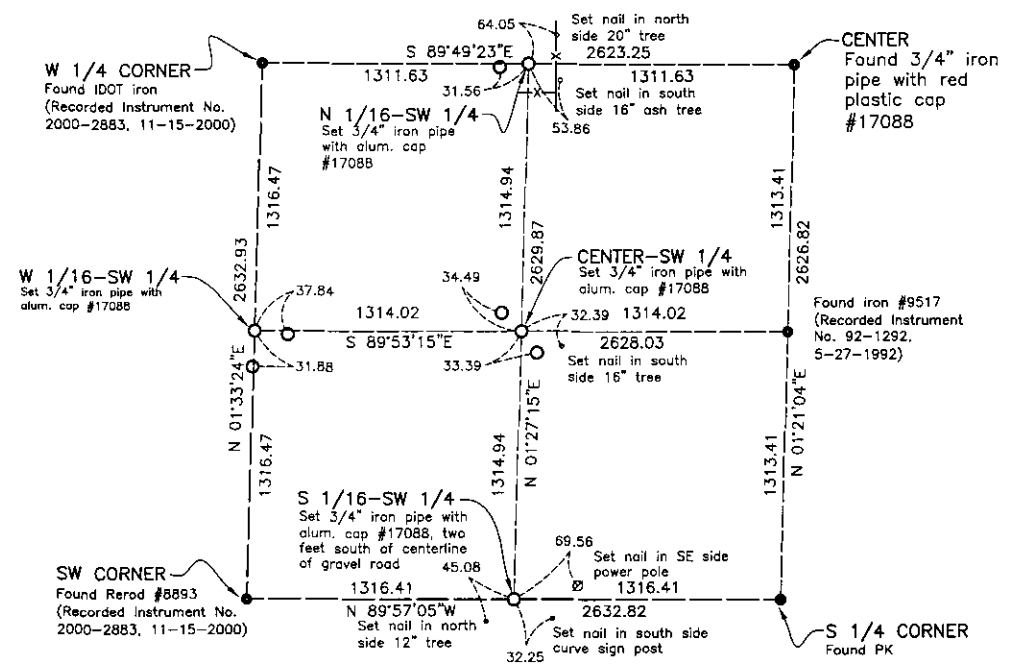
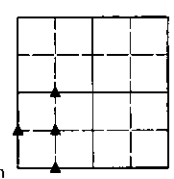
PREPARED BY JANELE FOWLDS, PLS. BOLTON & MENK, INC. 1960 PREMIER DRIVE MANKATO, MINNESOTA 56001 (507) 625-4171

**UNITED STATES PUBLIC LAND SURVEY CORNER CERTIFICATE  
OF**

Land Survey Monuments situated in Section 3, Township 83 North, Range 39 West of the Fifth Principal Meridian, Crawford County, Iowa. Previously recorded in \_\_\_\_\_ (not recorded) in County Recorder's Office.

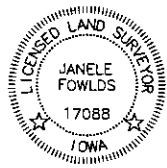
Monument Description and Remarks:

North 1/16 of SW 1/4 - Set 3/4" iron pipe with aluminum cap, #17088 at corner. Set 3/4" iron pipe reference monuments at tie position. Set nail in trees at tie positions.  
 West 1/16 of SW 1/4 - Set 3/4" iron pipe with aluminum cap, #17088 at corner. Set 3/4" iron pipe reference monuments at two tie positions.  
 South 1/16 of SW 1/4 - Set 3/4" iron pipe with aluminum cap, #17088 at corner. Set nails as reference monuments at three tie positions.  
 Center of SW 1/4 - Set 3/4" iron pipe with red plastic cap, #17088 at corner. Set 3/4" iron pipe reference monuments at two tie positions. Set nail in tree at tie position.  
 These corners were used for a survey in this section for Wal-Mart Stores, Inc.



I hereby certify that this land surveying document was prepared and the related surveying work was performed by me or under my direct supervision and that I am a duly licensed Land Surveyor under the laws of the State of Iowa.

Janele Fowlds 4-21-09  
 Date  
 Janele Fowlds, PLS  
 License No. 17088  
 My License Renewal Date is December 31, 2009  
 Pages or sheets covered by this seal: 1



**BOLTON & MENK, INC.**  
 Consulting Engineers & Surveyors  
 1960 PREMIER DRIVE, MANKATO, MN 56001 (507) 625-4171  
 MANKATO, MN FAIRMONT, MN SLEEPY EYE, MN BURNSVILLE, MN  
 WILLMAR, MN CHASKA, MN RAMSEY, MN AMES, IA

**CORNER INDEXED**  
 Corner: N 1/16 of SW 1/4  
 W 1/16 of SW 1/4  
 S 1/16 of SW 1/4  
 Center of SW 1/4  
 Section: 3  
 Township: 83  
 Range: 39

I:\WALM\M1538295\CAD\SEC 3\_COR\_CERT.DWG 04-20-2009 3:08p.m.