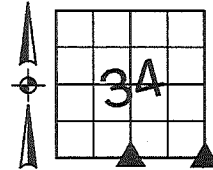


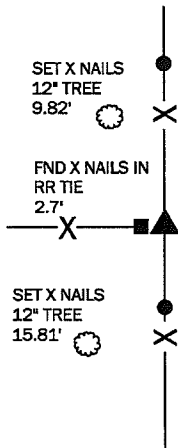
Denise Meeves RECORDER
 Crawford County, Iowa
 Instr. Number: 2017-1705
 Recorded: 8/30/2017 at 12:26:57.0 PM
 Pages 1
 Fee Amount: \$7.00
 Revenue Tax:

PREPARED BY AND RETURN TO: MIKE SCHULTE, SCHULTE SURVEYING, INC., 2003 390TH STREET, WESTSIDE, IA 51467 (712) 790-3489

UNITED STATES PUBLIC LAND SURVEY CORNER CERTIFICATE OF
 LAND SURVEY MONUMENTS SITUATED IN SECTION 34, TOWNSHIP 84 NORTH, RANGE 39 WEST, OF THE FIFTH
 PRINCIPAL MERIDIAN, CRAWFORD COUNTY, IOWA. PREVIOUSLY RECORDED IN SEE BELOW IN COUNTY
(book, page instrument number)
 RECORDER'S OFFICE.

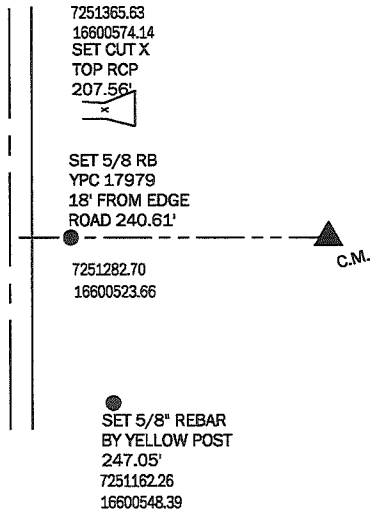


SOUTH 1/4 CORNER
 FND 1/2" PIPE WITH RPC #17088
 N: 7251285.17 E: 16598142.27 EL: 1251.8'



TRIED TO USE TIES RECORDED IN FEE BOOK 2009-1147, BUT THEY MADE NO SENCE OTHER THAN THE DISTANCE TO THE RR TIE. FOUND MOUNUMENT BY DIGGING AROUND. VERIFIED IT'S POSITION WITH OTHER SECTION CORNERS. RETIED CORNER BECAUSE CURRENT TIES DON'T WORK OUT RIGHT.

SE CORNER
 FOUND C.M. AT SURFACE IN FIELD
 N: 7251282.38 E: 16600764.27 EL: 1168.8'



TIES FROM FEE BOOK 2007-1626 HAVE BEEN TORNUSED END OF APRON TIE FROM INST 98-0379 TO VERIFY CALCS OF SECTION CORNER. DUG AROUND AND FOUND C.M. AT SURFACE IN BEAN FIELD. TIES TO FENCE ARE NOW GONE AND MONUMENT IS NOT BURIED ANY MORE. IT IS LIKELY THAT IT WILL BE DISTURBED IN THE FUTURE.

*All distances are measured horizontally unless noted.

LIST CORNERS TO BE INDEXED

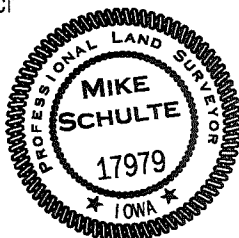
CORNER	SECTION	TWP	RANGE
S1/4 CORNER	34	84	39
SE CORNER	34	84	39
N1/4 CORNER	3	83	39
NE CORNER	3	84	39
SW CORNER	35	84	39
NW CORNER	2	83	39

BASIS OF BEARING

laRCS ZONE 6 - US SURVEY FEET
 laRTN DERIVED - NAD83(2011)(EPOCH 2010.00)

I HEREBY CERTIFY THAT THIS LAND SURVEYING DOCUMENT WAS PREPARED BY ME OR UNDER MY DIRECT PERSONAL SUPERVISION AND THAT I AM A DULY LICENSED PROFESSIONAL LAND SURVEYOR UNDER THE LAWS OF THE STATE OF IOWA.

Mike Schulte
 MIKE SCHULTE
 LICENSE NUMBER: 17979
 LICENSE RENEWAL DATE IS DECEMBER 31, 2017
 PAGES COVERED BY THIS SEAL: 1 OF 1



SCHULTE SURVEYING, INC.

DRAWN BY: MLS
 PROJ NUMBER: 17-043