

98 MAY -6 AM 10: 25

INST. NO. 98-1459
DENISE MEEVES, RECORDER

Denise Meeves
FEE 6.00

INDEXED
FOLLOW UP
PROOFED
DM
5/12

WARDER C. HILLHOUSE, JR. MHF ENGINEERING P.C. 300 W. MCKINLEY JEFFERSON, IA. (515)386-4101

UNITED STATES PUBLIC LAND SURVEY CORNER CERTIFICATE OF

Land Survey Monuments in Section 2, Township 83, Range 38, of the Fifth Principal Meridian, CRAWFORD County, Iowa.

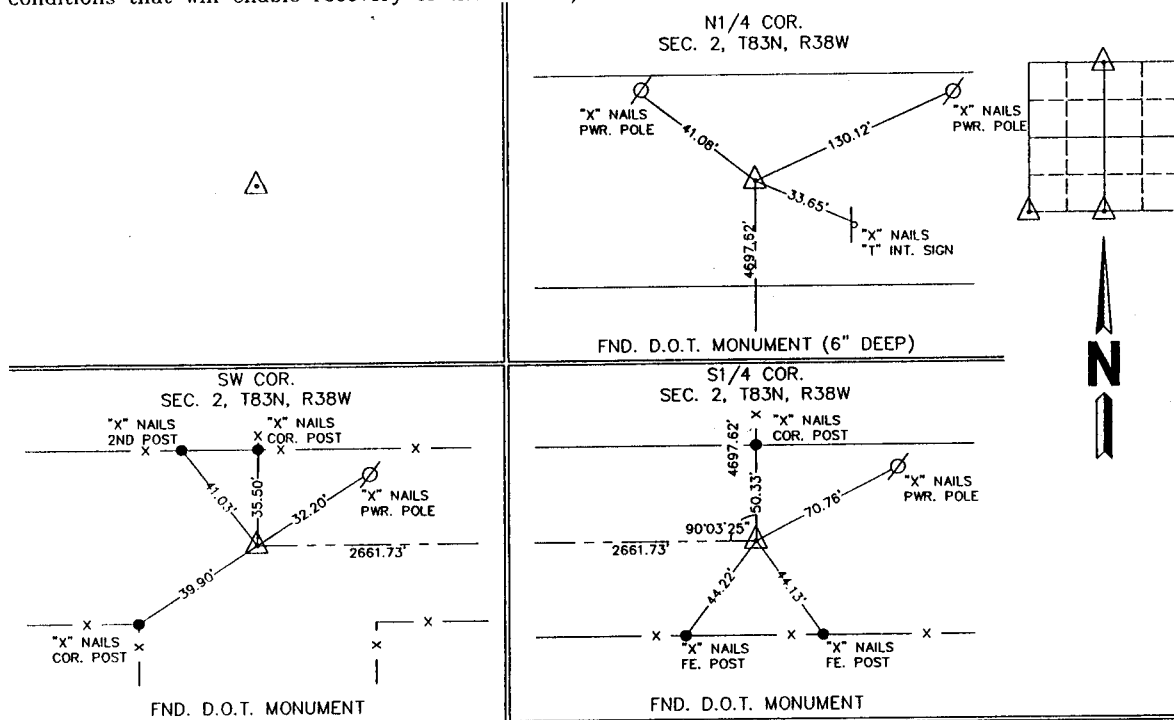
Previously recorded in _____ in County Recorder's Office.
(book, page, document number, etc.)

(Show reason for preparing this certificate, the evidence and detailed procedures used in establishing the corner positions and monumentation found or placed.)

Monument Description and Remarks: _____

PLAN - VIEW

(Show a minimum of three reference ties to durable physical objects, relevant monuments and physical conditions that will enable recovery of the corner.)



I hereby certify that land surveying document and the related survey work was performed by me or under my direct personal supervision and that I am a duly licensed land surveyor under the laws of the state of Iowa.

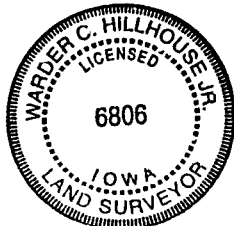
Signature: Warder C. Hillhouse, Jr.
Name typed or printed: Warder C. Hillhouse, Jr.

Date: 5/4/98 Lic. No. 6806

License Renewal Dec. 31, 1999

Date Surveyed: 04/23/98

Seal



List Corners to be Indexed			
Corners	Section	Twp	Range
N1/4 COR.	2	83	38
S1/4 COR.	2	83	38
SW COR.	2	83	38

File No. 98051-1



M.H.F. ENGINEERING, P.C.
ENGINEERS - LAND SURVEYORS
Jefferson, Iowa 50129 Ph. (515)386-4101