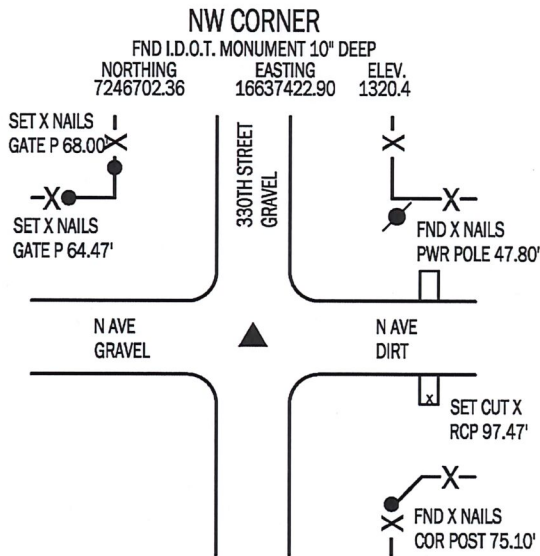


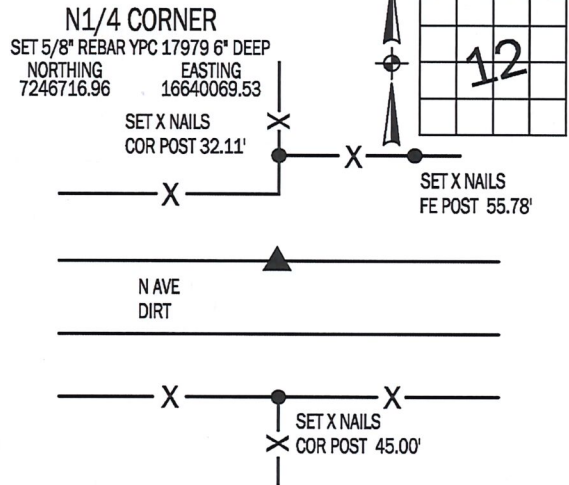
Denise Meeves RECORDER  
 Crawford County, Iowa  
 Instr. Number: 2019-0216  
 Recorded: 2/8/2019 at 2:36:47.0 PM  
 Pages 1  
 County Recording Fee: \$7.00  
 Iowa E-Filing Fee: \$3.13  
 Combined Fee: \$10.13  
 Revenue Tax:

PREPARED BY AND RETURN TO: MIKE SCHULTE, SCHULTE SURVEYING, INC., 2003 390TH STREET, WESTSIDE, IA 51467 (712) 790-3489

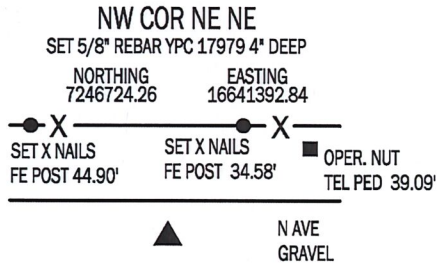
**UNITED STATES PUBLIC LAND SURVEY CORNER CERTIFICATE OF**  
 LAND SURVEY MONUMENTS SITUATED IN SECTION 12, TOWNSHIP 83 NORTH, RANGE 38 WEST, OF THE FIFTH  
 PRINCIPAL MERIDIAN, CRAWFORD COUNTY, IOWA. PREVIOUSLY RECORDED IN SEE BELOW IN COUNTY  
(book, page instrument number)  
 RECORDER'S OFFICE.



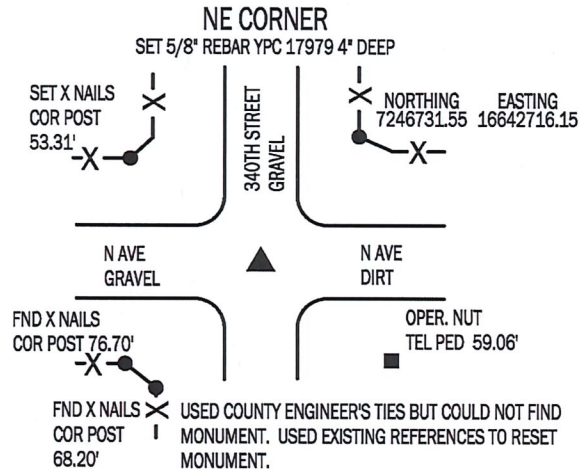
USED COUNTY ENGINEER'S TIES AND METAL LOCATOR TO FIND 3" ALUMINUM I.D.O.T. MONUMENT 10" DEEP. ACCEPTED MONUMENT AND RETIED SINCE THERE ARE NO CURRENT RECORDED TIES ON FILE.



NO RECORD OF CORNER FOUND OR MONUMENT OR MONUMENT ACCESSORIES WERE FOUND. USED NE CORNER AND NW CORNER TO CALCULATE A POSITION BY PROPORTION. REVIEWED LOCATION WITH EXISTING FENCES, IT FIT THE N-S LINE WELL AND RIGHT OF WAY FENCE NORTHEAST WELL. ACCEPTED POSITION AND SET MONUMENT.



NO RECORD OF CORNER FOUND. NO FENCES OR FENCE ACCESSORIES WERE FOUND, USED N1/4 COR AND NE CORNER TO CALCULATE A POSITION BY PROPORTION. REVIEWED LOCATION AND SET MONUMENT.



FND X NAILS COR POST 68.20' USED COUNTY ENGINEER'S TIES BUT COULD NOT FIND MONUMENT. USED EXISTING REFERENCES TO RESET MONUMENT.

**LIST CORNERS TO BE INDEXED**

CORNER	SECTION	TWP	RANGE
NW COR	12	83	38
SW COR	1	83	38
SE COR	2	83	38
NE COR	11	83	38
N1/4 COR	12	83	38
S1/4 COR	1	83	38
SW COR SESE	1	83	38
NW COR NENE	12	83	38
NW COR	7	83	37
SW COR	6	83	37
SE COR	1	83	38
NE COR	12	83	38

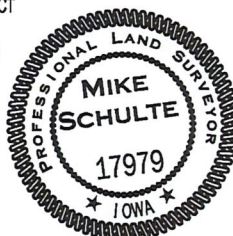
**BASIS OF BEARING**

laRCS ZONE 6 - US SURVEY FEET  
 laRTN DERIVED - NAD83(2011)(EPOCH 2010.00)

\*All distances are measured horizontally unless noted.

I HEREBY CERTIFY THAT THIS LAND SURVEYING DOCUMENT WAS PREPARED BY ME OR UNDER MY DIRECT PERSONAL SUPERVISION AND THAT I AM A DULY LICENSED PROFESSIONAL LAND SURVEYOR UNDER THE LAWS OF THE STATE OF IOWA.

*Mike Schulte*  
 MIKE SCHULTE 2019/02/08  
 DATE  
 LICENSE NUMBER: 17979  
 LICENSE RENEWAL DATE IS DECEMBER 31, 2019  
 PAGES COVERED BY THIS SEAL: 1 OF 1



**SCHULTE SURVEYING, INC.**

DRAWN BY: MLS  
 PROJ NUMBER: 19-007