

02 DEC -6 PM 1:25

INST. NO. 2002 - 3977

DENISE MEEVES, RECORDER

Denise Meeves

FFS *Manly Giten Deputy*

PREPARED BY: J. SCOTT SHEVEL L.S., KUEHL AND PAYER LTD., 423 WEST MAIN ST., SAC CITY, IA 50583 PH. (712)662-7859

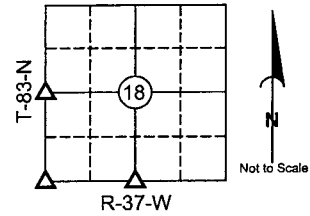
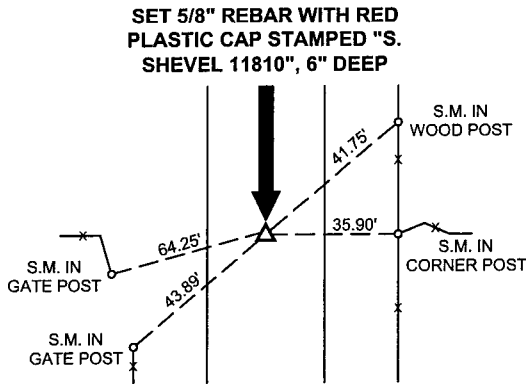
**UNITED STATES PUBLIC LAND SURVEY CORNER CERTIFICATE
OF**

LAND SURVEY MONUMENTS SITUATED IN SECTION 18, TOWNSHIP 83 NORTH,
RANGE 37 WEST, OF THE 5TH PRINCIPAL MERIDIAN, CRAWFORD COUNTY, IOWA.
PREVIOUSLY RECORDED IN BOOK _____ PAGE _____

MONUMENT DESCRIPTION AND REMARKS:

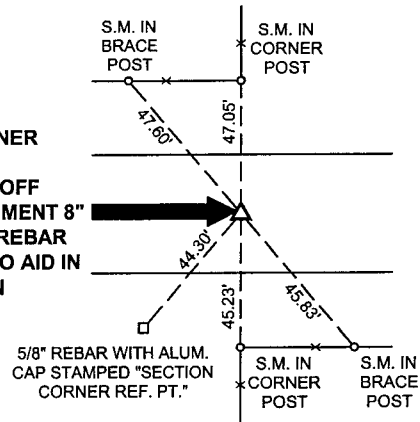
- 1.) W 1/4 CORNER 18-83-37: ACCORDING TO COUNTY RECORDS, NO MONUMENT WAS FOUND IN PREVIOUS SEARCH; SET 5/8" REBAR WITH RED PLASTIC CAP STAMPED "S. SHEVEL 11810", 6" DEEP, EQUIDISTANT ON A LINE BETWEEN THE SW & NW CORNERS
- 2.) SW CORNER 18-83-37: FOUND 1" BAR 18" DEEP
- 3.) S 1/4 CORNER 18-83-37: FOUND BROKEN OFF CONCRETE MONUMENT 8" DEEP; SET 1/2" REBAR ON SOUTH SIDE TO AID IN LOCATION

**1.) W 1/4 CORNER
18-83-37
PLAN - VIEW**

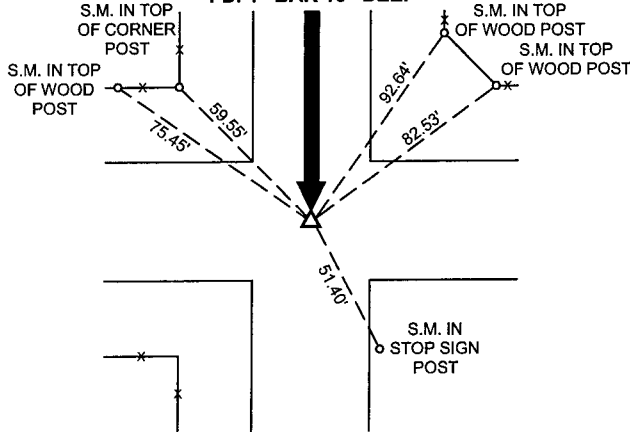


CRAWFORD COUNTY

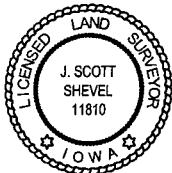
**3.) S 1/4 CORNER
18-83-37
FD. BROKEN OFF
CONCRETE MONUMENT 8"
DEEP; SET 1/2" REBAR
ON SOUTH SIDE TO AID IN
LOCATION**



**2.) SW CORNER
18-83-37
FD. 1" BAR 18" DEEP**



S.M. = SURVEY MARKER
PLASTIC REFERENCE DISK
AS SHOWN BELOW



I hereby certify that this land surveying document was prepared and the related survey work was performed by me or under my direct personal supervision and that I am a duly licensed Land Surveyor under the laws of the State of Iowa.

J. Scott Shevel 12/2/02
Date: _____
J. Scott Shevel
License Number 11810
My license renewal date is December 31, 2003
Pages covered by this seal 1

List Corners to be Indexed

| Corners | Section | Township | Range |
|----------|---------|----------|-------|
| 1) W 1/4 | 18 | 83 | 37 |
| 2) SW | 18 | 83 | 37 |
| 3) S 1/4 | 18 | 83 | 37 |

PN: 020628
DRAWN: JMK