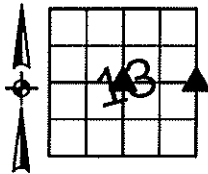


Sara Meseck, RECORDER
 Crawford County, Iowa
 Instr. Number: 2025-2360
 Recorded: 12/3/2025 at 4:18:32.0 PM
 Pages 1
 County Recording Fee: \$7.00
 Iowa E-Filing Fee: \$3.13
 Combined Fee: \$10.13
 Revenue Tax:

PREPARED BY AND RETURN TO: MIKE SCHULTE, SCHULTE SURVEYING, INC., 2003 390TH STREET, WESTSIDE, IA 51467 (712) 790-3489

UNITED STATES PUBLIC LAND SURVEY CORNER CERTIFICATE OF
 LAND SURVEY MONUMENTS SITUATED IN SECTION 13, TOWNSHIP 83 NORTH, RANGE 38 WEST, OF THE FIFTH
 PRINCIPAL MERIDIAN, CRAWFORD COUNTY, IOWA. PREVIOUSLY RECORDED IN SEE BELOW IN COUNTY
 RECORDER'S OFFICE. (book, page instrument number)



CENTER

FND 1/2" REBAR OPC #11579

N=7238812.74 E=16640074.72 Z=1432.82

USED CERTIFICATE RECORDED IN FEE BOOK 2005-2093 AND A METAL LOCATOR TO FIND A 1/2" REBAR OPC #11579. VERIFIED WITH 2 REMAINING TIES.

THIS CERTIFICATE IS BEING FILED TO UPDATE THE REFERENCE TIES.

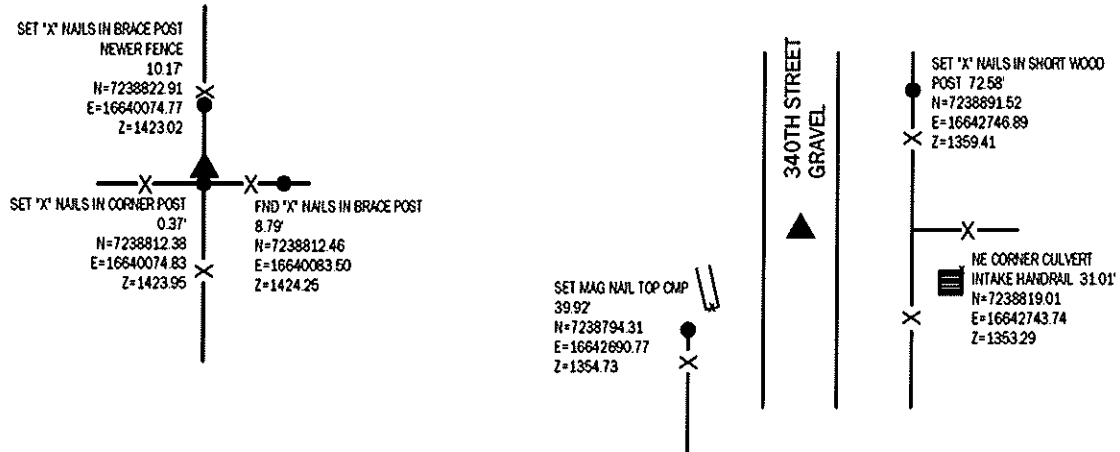
E1/4 CORNER

FND 5/8" REBAR RPC #11810 6" DEEP

N=7238826.95 E=16642713.76 Z=1356.17

USED CERTIFICATE RECORDED IN DOCUMENT #2002-3977 AND A METAL LOCATOR TO FIND A 5/8" REBAR RPC #11810 6" DEEP. VERIFIED WITH SURROUNDING FIELD EVIDENCE.

THIS CERTIFICATE IS BEING FILED TO UPDATE THE REFERENCE TIES.



*All distances are measured horizontally unless noted.

I HEREBY CERTIFY THAT THIS LAND SURVEYING DOCUMENT WAS PREPARED BY ME OR UNDER MY DIRECT PERSONAL SUPERVISION AND THAT I AM A DULY LICENSED PROFESSIONAL LAND SURVEYOR UNDER THE LAWS OF THE STATE OF IOWA.

Mike Schulte
 MIKE SCHULTE
 LICENSE NUMBER 17979
 LICENSE RENEWAL DATE IS DECEMBER 31, 2025
 PAGES COVERED BY THIS SEAL: 1 OF 1



LIST CORNERS TO BE INDEXED

CORNER	SECTION	TWP	RANGE
E1/4 CORNER	13	83	38
W1/4 CORNER	18	83	37
CENTER	13	83	38

BASIS OF BEARING

IA RCS ZONE 6 - US SURVEY FEET
 IAR7N DERIVED - NAD83(2011)EPOCH 2010.00

SCHULTE SURVEYING, INC.

DRAWN BY: SLG
 PROJ NUMBER: 25-112