

97 AUG -5 AM 11:13

97-1884

INST. NO. DENISE MEEVES, RECORDER

Denise Meeves
FEE #602 *Mary Giten, Deputy*

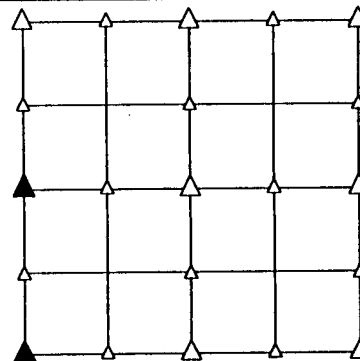
PREPARED BY - TERENCE E. CRAWFORD - SUNDQUIST ENGINEERING - 120 S. MAIN DENISON, IOWA 51442 - PHONE (712)263-8118

UNITED STATES PUBLIC LAND SURVEY CORNER CERTIFICATE OF

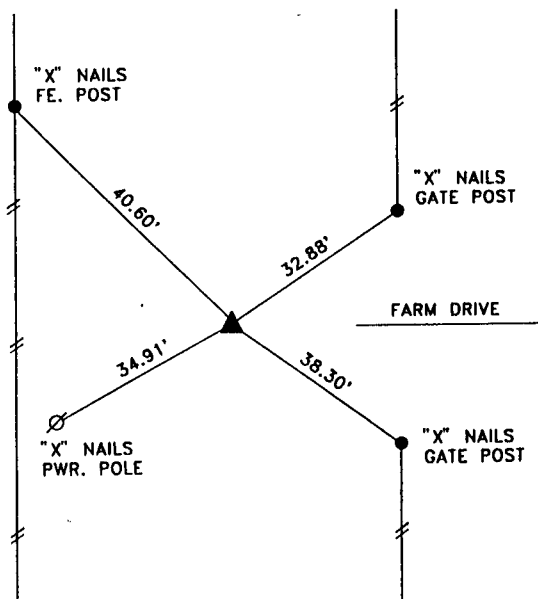
LAND SURVEY MONUMENT SITUATED IN SECTION 20 ; T 83 N, R 38 W OF
THE 5TH P.M., CRAWFORD COUNTY, IOWA.
PREVIOUSLY RECORDED IN BOOK , PAGE , OTHER

MONUMENT DESCRIPTION AND REMARKS

W1/4 CORNER - SET 5/8" IRON PIN W/CAP #8893 ON LINE &
ON SPLIT BETWEEN NW & SW CORNERS 3" DEEP
SW CORNER - SET 5/8" IRON PIN W/CAP #8893 12" DEEP, SET
FROM COUNTY TIES & 1987 SURVEY INFORMATION

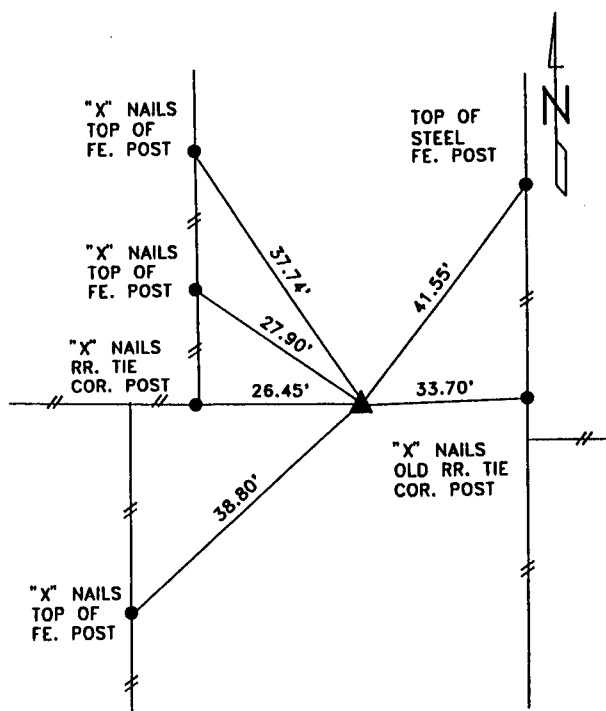


PLAN VIEW SHOWING RELATIVE LOCATION OF MONUMENT AND REFERENCE POINTS.



DISTANCES SLOPE CHAINED

W1/4 CORNER OF SECTION 20-83-38



DISTANCES PLUMB CHAINED

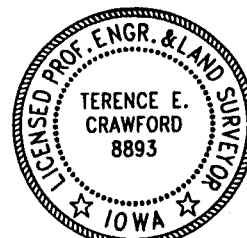
SW CORNER OF SECTION 20-83-38

I HEREBY CERTIFY THAT THE SURVEY WORK WAS COMPLETED AND THIS LAND SURVEYING DOCUMENT WAS PREPARED BY ME OR UNDER MY DIRECT PERSONAL SUPERVISION AND THAT I AM A DULY LICENSED LAND SURVEYOR UNDER THE LAWS OF THE STATE OF IOWA.

Terence E. Crawford JUL 24 1997

TERENCE E. CRAWFORD
IA LICENSE NO. 8893

DATE
EXP. DATE DECEMBER 31, 1997



SE PROJECT NO. 2417