

2004 JAN 20 PM 2:06
INST. NO. 2004-0161
DENISE MEYER, RECORDER
Denise Meyer
FEE \$11.00

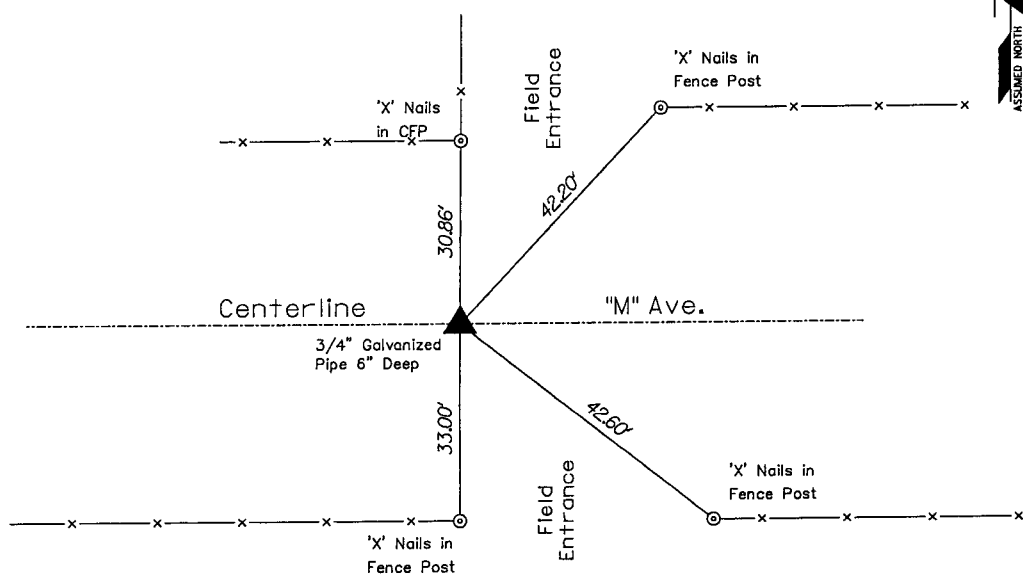
George A. Parris, PE/LS, JEO Consulting Group, Inc., 724 Simon Avenue, Carroll, Iowa 51401, 712-792-9711

**UNITED STATES PUBLIC LAND SURVEY
CORNER CERTIFICATE**
Land Survey Monument Situated in Section 36
Township 84 North Range 38 West, of the 5th P.M.
CRAWFORD County, Iowa.

Monument Description and Remarks:

Found 3/4 inch galvanized pipe located centerline of gravel road, 6 inches deep.

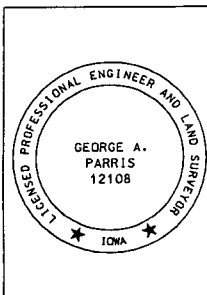
**PLAN - VIEW
SOUTH QUARTER CORNER
SECTION 36 - T 84 N - R 38 W**



NO SCALE

All ties are "X" nails unless noted otherwise

1227SU20

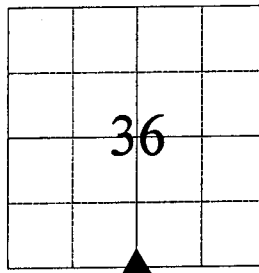


I hereby certify that this land surveying document was prepared and the related survey work was performed by me or under my direct personal supervision and that I am a duly licensed Land Surveyor under the laws of the State of Iowa.

George A. Parris 1-7-04
George A. Parris Date
My license renewal date is December 31, 2004

Sheets covered by this seal:

ALL



List Corner to be Indexed

Corner	Section	Twp	Range
S1/4	36	84	38

JEO
Consulting
Group, Inc.

712/792-8711
724 SIMON AVENUE
CARROLL, IOWA
51401

CORPORATE OFFICE
40943-8811
P.O. BOX 207
WASCO, NE
68086

BRANCH OFFICES
SIBOLA CITY, IA
31852-3600

LINCOLN, NE
40948-3040

HATHORN, NE
68402-8857

NORFOLK, NE
40507-0416

HEPARKA CITY, NE
68057-0406
NEW RICHMOND, WI
71626-2319
<http://www.jeo.com>