

This document prepared by : Semke & Associates - 712-792-2276  
Micheal G. Semke, L.S. #10318 - 716 N. Crawford St. - Carroll, Iowa

UNITED STATES PUBLIC LAND SURVEY CORNER CERTIFICATE  
OF

Land Survey Monuments situated in Section 23, Township 83 North, Range 38  
West, of the Fifth Principal Meridian, Crawford County, Iowa.  
Previously recorded in Book , Page in County Recorder's Office.

(Show reason for preparing this certificate, the evidence and detailed procedures used in establishing the corner positions and monumentation found or placed.)

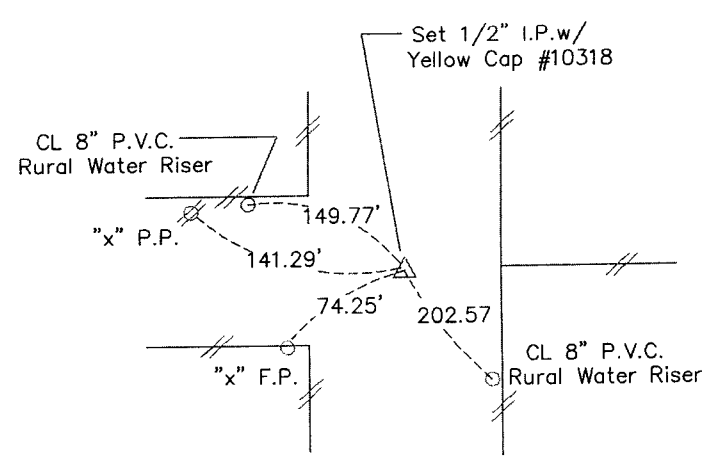
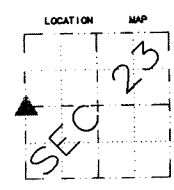
W 1/4 Corner Set 1/2" I.P. w/Yellow Cap #10318  
@ R.O.W. Split & in line w/fe. East

Note: All pins set are 1/2" x 24" Rerod w/Yellow Cap #10318 unless noted otherwise.

PLAN - VIEW

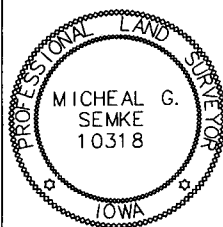
(Show a minimum of three reference ties to durable physical objects, relevant monuments and physical conditions that will enable recovery of the corner.)

W 1/4 Cor  
23-83-38



Note: all ties HORIZONTAL DISTANCE chained unless noted otherwise.

I HEREBY CERTIFY THAT THIS LAND SURVEYING DOCUMENT AND RELATED SURVEY WORK WAS PERFORMED BY ME OR UNDER MY DIRECT PERSONAL SUPERVISION AND THAT I AM A DULY LICENSED LAND SURVEYOR UNDER THE LAWS OF THE STATE OF IOWA.

 Signature: Micheal G. Semke Date: 11/3/04  
Micheal G. Semke, L.S. No. 10318  
Printed of Typed Name

Pages of sheets covered by this seal THIS PAGE My license is subject to renewal 12/31/05.

List Corners to be Indexed			
Corners	Section	Twp	Range
W 1/4 Cor	23	83	38
E 1/4 Cor	22	83	38