

INDEXED 30  
 FOLLOW UP \_\_\_\_\_  
 PROOFED \_\_\_\_\_  
 SCANNED \_\_\_\_\_

Instrument #: 2014-0312  
 02/11/2014 11:06:48 AM Total Pages: 1  
 PLC PLAT CORNER CER  
 Recording Fee: \$7.00 Transfer Tax: \$0  
 Denise Hieves, Recorder, Crawford County Iowa

Myron G. Daringer, JEO Consulting Group, Inc., 724 Simon Avenue, Carroll IA 51401 712/792-9711

# UNITED STATES PUBLIC LAND SURVEY CORNER CERTIFICATE

## NW CORNER

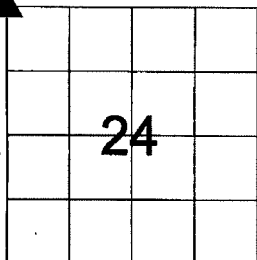
### SECTION 24, TOWNSHIP 83 NORTH, RANGE 38 WEST OF THE 5TH P.M., CRAWFORD COUNTY, IOWA

**REASON FOR SECTION CORNER CERTIFICATE:**  
 \_\_\_ THERE IS NO CERTIFICATE FOR THE CORNER ON FILE WITH THE RECORDER OF COUNTY IN WHICH THE CORNER IS LOCATED.  
 \_\_\_ THE SURVEYOR IN RESPONSIBLE CHARGE OF THE LAND SURVEYING ACCEPTS A CORNER POSITION WHICH DIFFERS FROM THAT SHOWN IN THE PUBLIC RECORDS OF THE COUNTY IN WHICH THE CORNER IS LOCATED.  
 \_\_\_ THE CORNER MONUMENT IS REPLACED OR MODIFIED IN ANY WAY.  
 THE REFERENCE TIES IN AN EXISTING PUBLIC RECORD ARE INCORRECT OR MISSING.  
 \_\_\_ OTHER

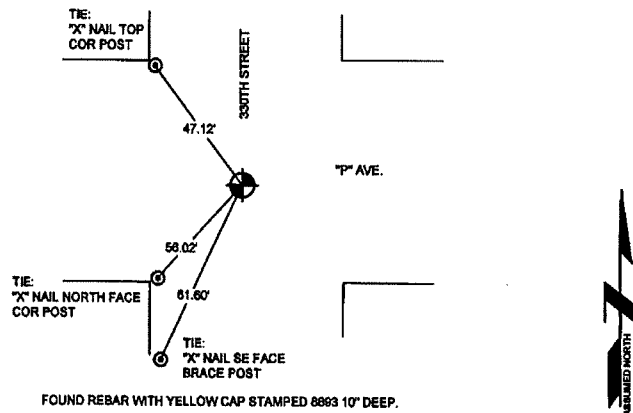
**DESCRIPTION OF MONUMENT:**  
 MATERIAL - REBAR  
 CAP COLOR - YELLOW  
 CAP NOTATION - 8863  
 DEPTH - 10" DEEP  
 OTHER -

**EXTENT OF SEARCH:**  
 \_\_\_ FOOT RADIUS FROM A POINT CALCULATED FROM RECORDED DISTANCES.  
 \_\_\_ FEET DEEP.

- LEGEND**
- MONUMENT FOUND
  - MONUMENT SET
  - CONCRETE MARKER
  - POWER POLE
  - S - SET MONUMENT
  - F - FOUND MONUMENT
  - Y.C. - YELLOW CAP
  - PPOL - POWER POLE
  - C.P. - CORNER FENCE POST
  - G.P. - GATE POST
  - TPED - TELEPHONE PEDESTAL
  - C.M. - CONCRETE MARKER
  - A.G. - ABOVE GROUND



### PLAN - VIEW NW CORNER



NO SCALE  
 ALL TIES ARE "X" NAILS UNLESS NOTED OTHERWISE.  
 ALL DISTANCES ARE HORIZONTAL UNLESS OTHERWISE NOTED.

131458.00

LIST CORNER TO BE INDEXED

CORNER	SECTION	TWP	RANGE
NW	24	83	38

DATE: 1/29/14  
 SCALE: NOT TO SCALE  
 DRAWN: RBB  
 JOB NO: R131458.00  
 FIELD BOOK: CRAWFORD CO. #2  
 FIELD WORK: RBB/MGD  
 SHEET: 1 OF 1  
 FILE NO: 131458

**JEO CONSULTING GROUP INC**  
 800.723.8567  
 Carroll, IA 712-792-9711  
 Ankeny, Iowa 515-964-5310  
 www.jeo.com



I HEREBY CERTIFY THAT THIS LAND SURVEYING DOCUMENT WAS PREPARED AND THE RELATED SURVEY WORK WAS PERFORMED BY ME OR UNDER MY DIRECT PERSONAL SUPERVISION AND THAT I AM A DULY LICENSED LAND SURVEYOR UNDER THE LAWS OF THE STATE OF IOWA.

*Myron G. Daringer* 2/10/14  
 SIGNATURE DATE  
 MYRON G. DARINGER  
 PRINTED OR TYPED NAME

19758  
 MY LICENSE RENEWAL DATE IS: DECEMBER 31, 2015  
 PAGES OR SHEETS COVERED BY THIS SEAL:

THIS SHEET