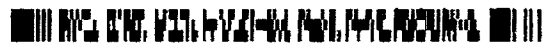


Instrument #: 2014-1243  
 06/23/2014 12:07:02 PM Total Pages: 1  
 PLC PLAT CORNER CER  
 Recording Fee: \$7.00 Transfer Tax: \$0  
 Denise Reeves, Recorder, Crawford County Iowa



WILKE LAND SURVEYING INC. 401 1800th Street Panama, Iowa 51562 (712)489-2896

**UNITED STATES PUBLIC LAND SURVEY CORNER CERTIFICATE**

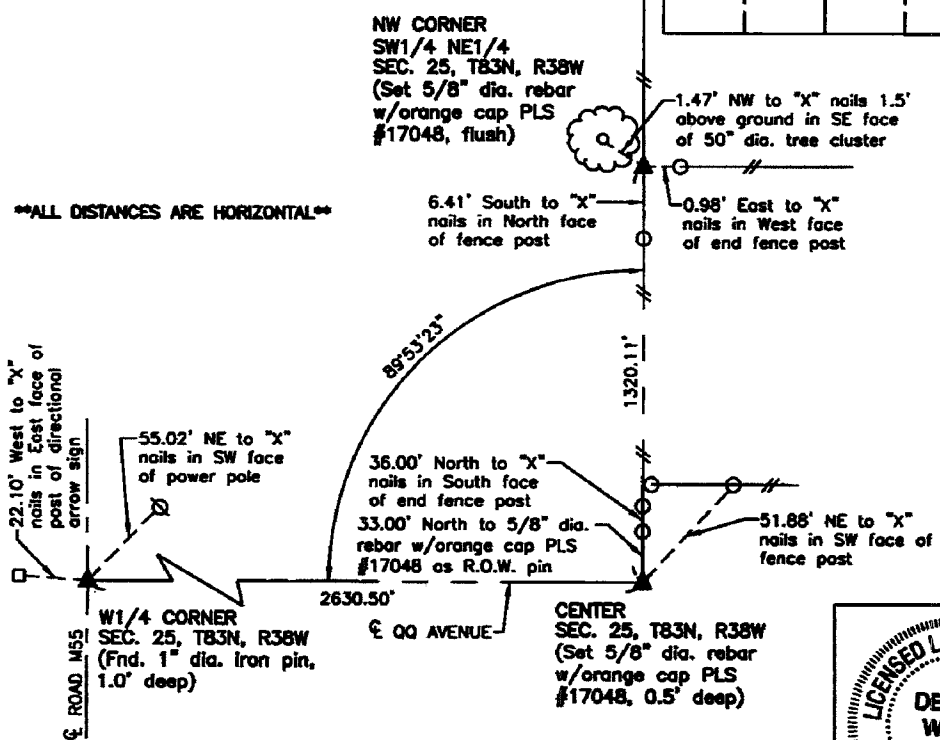
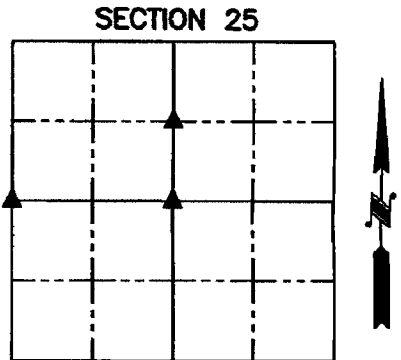
SECTION 25 TOWNSHIP 83N RANGE 38W COUNTY CRAWFORD

Monument Description and Remarks: Reason for Certificate: (No record Certificate)

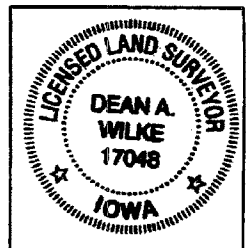
CENTER - Set 5/8" diameter by 24" long rebar with orange cap PLS #17048 (0.5' deep) at the centerline of QQ Avenue and in line with fence to the North.

NW CORNER SW1/4 NE1/4 - Set 5/8" diameter by 24" long rebar with orange cap PLS #17048 (flush) on the West line of the NE1/4 and in line with fence to the East.

W1/4 CORNER - Found 1" diameter iron pin (1.0' deep).



\*\*ALL DISTANCES ARE HORIZONTAL\*\*



I hereby certify that this land surveying document was prepared and the related survey work was performed by me or under my direct personal supervision and that I am a duly licensed Land Surveyor under the laws of the State of Iowa.

*Dean A. Wilke* 6/19/14  
 Dean A. Wilke Date

License number 17048  
 My license renewal date is December 31, 2015  
 Pages or sheets covered by this seal: This page only

List Corners to be Indexed			
Corner	Section	Twp.	Range
CENTER	25	83N	38W
NW CORNER SW1/4 NE1/4	25	83N	38W
W1/4 CORNER	25	83N	38W