

97 AUG -5 AM 11:13  
97-1884

INST. NO.      
DENISE MEEVES, RECORDER  
*Denise Meeves*  
FEE #600 *Mary Giten, Deputy*

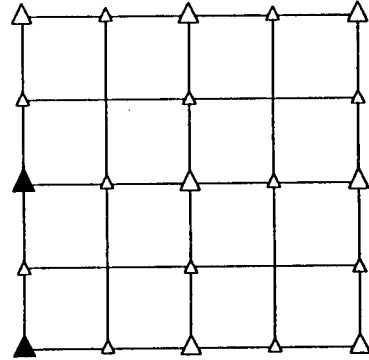
PREPARED BY - TERENCE E. CRAWFORD - SUNDQUIST ENGINEERING - 120 S. MAIN DENISON, IOWA 51442 - PHONE (712)263-8118

### UNITED STATES PUBLIC LAND SURVEY CORNER CERTIFICATE OF

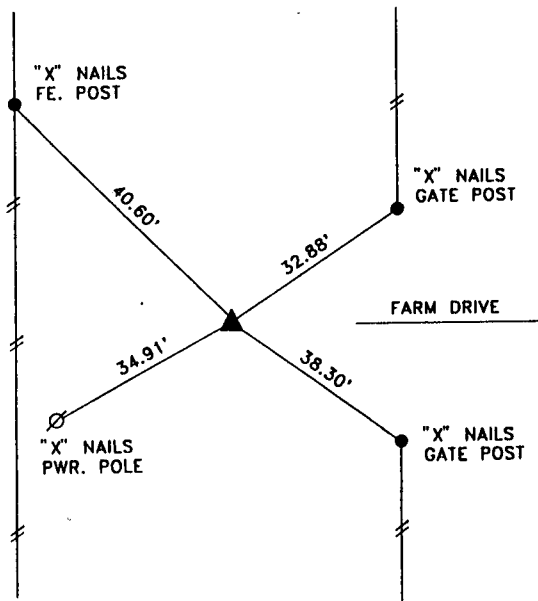
LAND SURVEY MONUMENT SITUATED IN SECTION 20 ; T 83 N, R 38 W OF  
THE 5TH P.M.,     CRAWFORD     COUNTY, IOWA.  
PREVIOUSLY RECORDED IN BOOK    , PAGE    , OTHER    

#### MONUMENT DESCRIPTION AND REMARKS

W1/4 CORNER - SET 5/8" IRON PIN W/CAP #8893 ON LINE &  
ON SPLIT BETWEEN NW & SW CORNERS 3" DEEP  
SW CORNER - SET 5/8" IRON PIN W/CAP #8893 12" DEEP, SET  
FROM COUNTY TIES & 1987 SURVEY INFORMATION

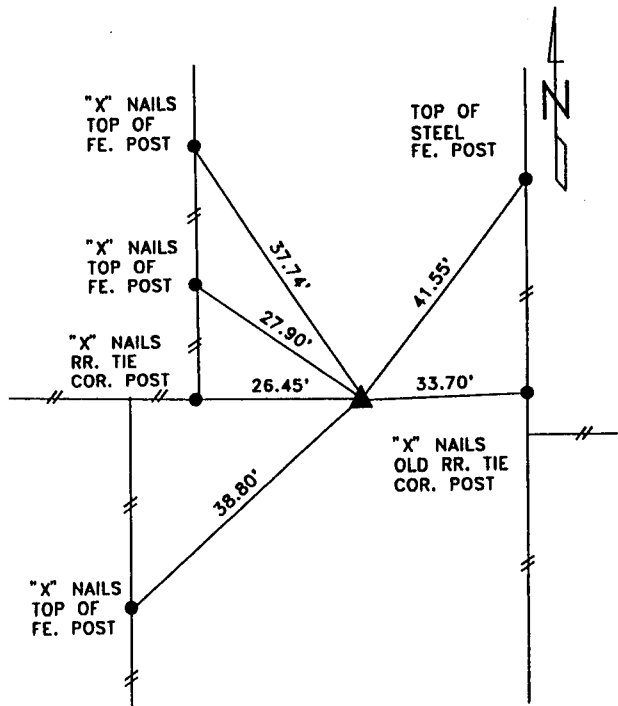


#### PLAN VIEW SHOWING RELATIVE LOCATION OF MONUMENT AND REFERENCE POINTS.



DISTANCES SLOPE CHAINED

W1/4 CORNER OF SECTION 20-83-38



DISTANCES PLUMB CHAINED

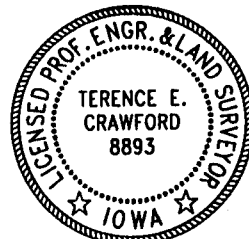
SW CORNER OF SECTION 20-83-38

I HEREBY CERTIFY THAT THE SURVEY WORK WAS COMPLETED AND  
THIS LAND SURVEYING DOCUMENT WAS PREPARED BY ME OR UNDER  
MY DIRECT PERSONAL SUPERVISION AND THAT I AM A DULY  
LICENSED LAND SURVEYOR UNDER THE LAWS OF THE STATE OF  
IOWA.

*Terence E. Crawford* JUL 24 1997

TERENCE E. CRAWFORD  
IA LICENSE NO. 8893

DATE  
EXP. DATE DECEMBER 31, 1997



SE PROJECT NO. 2417