

Crawford County Recorder
 Denise Neeves
Fee Book 2013-1817
 07/29/2013 @ 11:57AM
 PLC PLAT CORNER CER
 Book: Page: # Pages: 1
 Total Fees: \$7.00

WILKE LAND SURVEYING INC. 401 1800th Street Panama, Iowa 51562 (712)489-2898

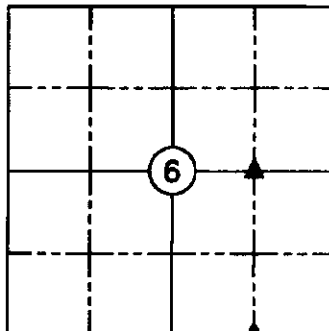
UNITED STATES PUBLIC LAND SURVEY CORNER CERTIFICATE

SECTION 6 TOWNSHIP 83N RANGE 38W COUNTY CRAWFORD
 Reason for Certificate: (No record Certificate)

Monument Description and Remarks:

NE CORNER NW1/4 SE1/4 - Set 5/8" diameter by 24" rebar with orange cap PLS #17048 (flush) at the midpoint of the North line of the Southeast Quarter.

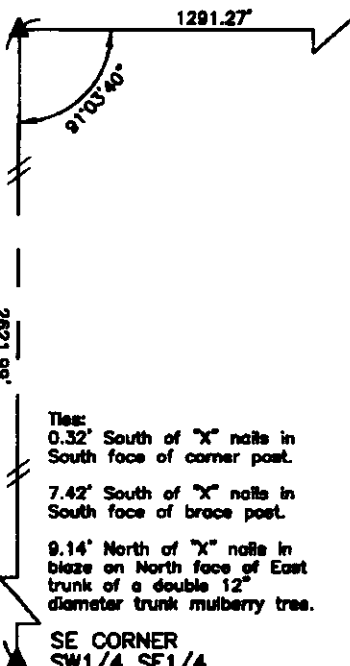
SE CORNER SW1/4 SE1/4 - Set 5/8" diameter by 24" rebar with orange cap PLS #17048 (flush) on the South side of old corner post with fences running North and South. Found old wire grown into trees to the West supporting corner location.



NE CORNER
 NW1/4 SE1/4
 SEC. 6, T83N, R38W
 (Set 5/8" dia. by 24" rebar w/orange cap PLS #17048, flush with ground)

Ties:
 11.35' SE of "X" nails in top of fence division corner post.

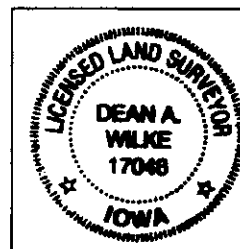
2.1' East of existing fence line South.



E1/4 CORNER
 SEC. 6, T83N, R38W
 (Fnd. conc. mon. w/brass disc)

Ties:
 0.32' South of "X" nails in South face of corner post.
 7.42' South of "X" nails in South face of brace post.
 9.14' North of "X" nails in blaze on North face of East trunk of a double 12" diameter trunk mulberry tree.

SE CORNER
 SW1/4 SE1/4
 SEC. 6, T83N, R38W
 (Set 5/8" dia. by 24" rebar w/orange cap PLS #17048, flush with ground)



ALL DISTANCES ARE PLUMB

List Corners to be Indexed			
Corner	Section	Twp.	Range
NE CORNER NW1/4 SE1/4	6	83N	38W
SE CORNER SW1/4 SE1/4	6	83N	38W

I hereby certify that this land surveying document was prepared and the related survey work was performed by me or under my direct personal supervision and that I am a duly Licensed Land Surveyor under the laws of the State of Iowa.

Dean A. Wilke 7/24/13
 Dean A. Wilke Date

License number 17048

My license renewal date is December 31, 2013

Pages or sheets covered by this seal: This page only