

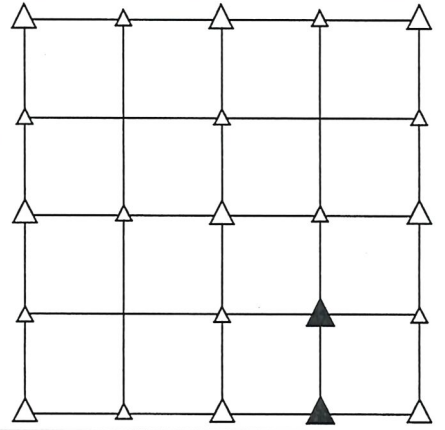
UNITED STATES PUBLIC LAND SURVEY CORNER CERTIFICATE  
OF

LAND SURVEY MONUMENT SITUATED IN SECTION 31, T 84 N, R 38 W OF  
THE 5TH P.M., CRAWFORD COUNTY, IOWA.  
PREVIOUSLY RECORDED IN BOOK \_\_\_\_\_, PAGE \_\_\_\_\_, OTHER \_\_\_\_\_

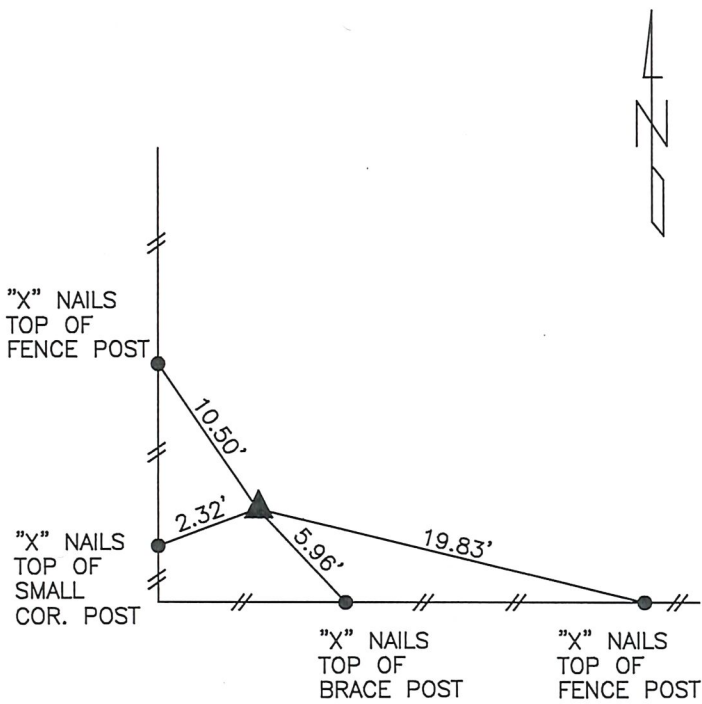
MONUMENT DESCRIPTION AND REMARKS

NE CORNER  
SW1/4 SE1/4 - SET 5/8" DIA. X 18" IRON PIN W/ORANGE CAP  
#14709 FLUSH. SET AT INTERSECTION OF LINES FROM  
NW COR. SW1/4 SE1/4 & NE COR. SE1/4 SE1/4  
AND SE COR. SW1/4 SE1/4 & NE COR. NW1/4  
SE1/4 OF SEC. 31.

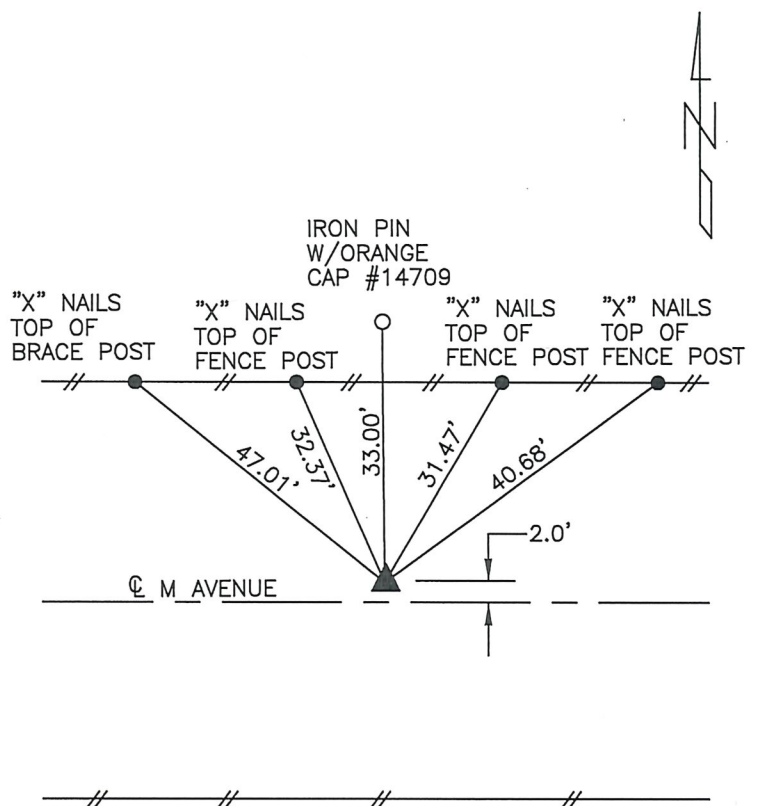
SE CORNER  
SW1/4 SE1/4 - SET 5/8" DIA. X 18" IRON PIN W/ORANGE CAP  
#14709 6" DEEP. SET ON LINE AND AT SPLIT  
BETWEEN S1/4 COR. & SE COR. OF SEC. 31.



PLAN VIEW SHOWING RELATIVE LOCATION OF MONUMENT AND REFERENCE POINTS.



DISTANCES PLUMB CHAINED  
NE CORNER SW1/4 SE1/4  
SECTION 31-84-38

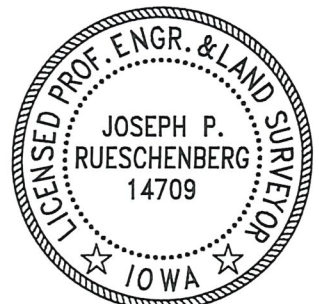


DISTANCES PLUMB CHAINED  
SE CORNER SW1/4 SE1/4  
SECTION 31-84-38

I HEREBY CERTIFY THAT THIS LAND SURVEYING DOCUMENT WAS PREPARED  
AND THE RELATED SURVEY WORK WAS PERFORMED BY ME OR UNDER MY  
DIRECT PERSONAL SUPERVISION AND THAT I AM A DULY LICENSED LAND  
SURVEYOR UNDER THE LAWS OF THE STATE OF IOWA.

*Joseph P. Rueschenberg* 2-4-2019  
JOSEPH P. RUESCHENBERG DATE

IA LICENSE NO. 14709 EXP. DATE DECEMBER 31, 2020



SE PROJECT NO. 20519  
DRAWN BY: LLL