

INDEXED KM
 FOLLOW UP _____
 PROOFED _____
 SCANNED _____

Instrument #: 2018-1934
 09/19/2018 08:27:33 AM Total Pages: 1
 PLC PLAT CORNER CER
 Recording Fee: \$0.00 Transfer Tax: \$0
 Denise Meeves, Recorder, Crawford County Iowa



PREPARED BY: PAUL ASSMAN-CRAWFORD COUNTY ENGINEER'S OFFICE-COURTHOUSE-DENISON, IA.-712-263-2449

UNITED STATES PUBLIC LAND SURVEY CORNER CERTIFICATE OF

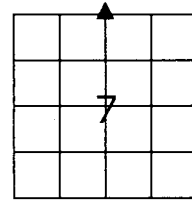
LAND SURVEY MONUMENT SITUATED IN EAST BOYER TOWNSHIP, THE NORTH 1/4 CORNER OF SECTION 7,
T-83N, R-38W OF THE FIFTH P.M. CRAWFORD COUNTY, IOWA.

PREVIOUSLY RECORDED AS NO. 91-1375

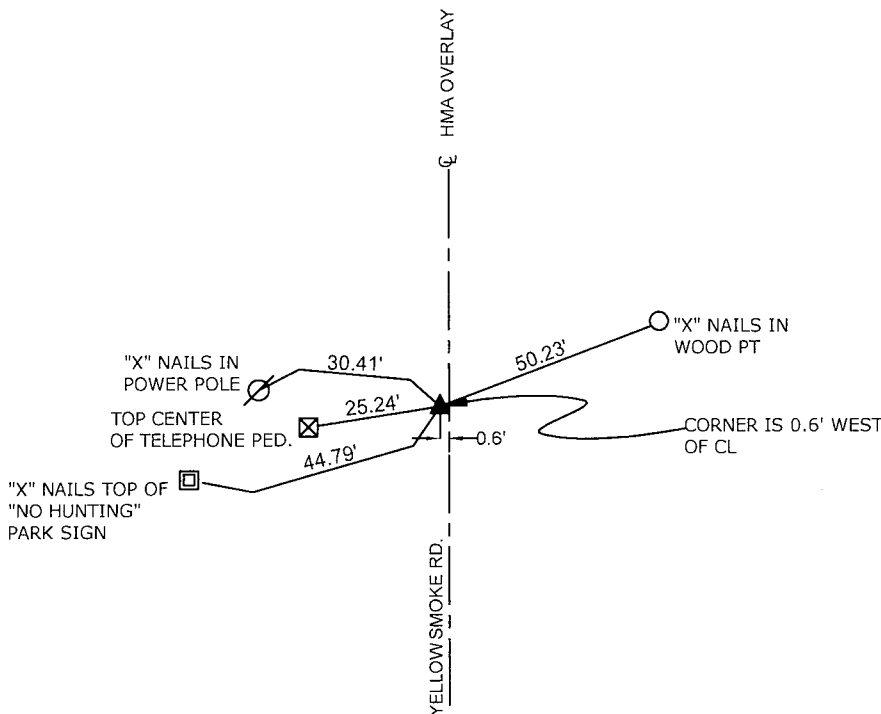
MONUMENT DESCRIPTION AND REMARKS

NORTH 1/4 CORNER SEC. 7-83-38

FOUND LEAD PLUG AT SURFACE IN ACCORDANCE WITH PREVIOUS TIES. COUNTY COMPLETED HMA OVERLAY, PROJECT NO. FM-CO24(118). SET 1/2" CARRIAGE BOLT AT SURFACE. RETIED CORNER.



NORTH 1/4 CORNER SEC. 7-83-38



ALL DISTANCES ARE SLOPE CHAINED

CERTIFICATION:

I HEREBY CERTIFY THAT THIS LAND SURVEYING DOCUMENT WAS PREPARED AND THE RELATED SURVEY WORK WAS PERFORMED BY ME OR UNDER MY DIRECT PERSONAL SUPERVISION AND THAT I AM A DULY LICENSED LAND SURVEYOR UNDER THE LAWS OF THE STATE OF IOWA.

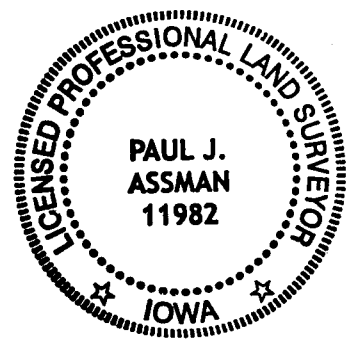
Signature

Date of Survey

PAUL J. ASSMAN
 Typed Name

11982
 L.S. No.

12-31-18
 License Renewal Date



Pages covered by this seal 1