

Crawford County Recorder  
 Denise Neeves  
**Fee Book 2013-1817**  
 07/29/2013 @ 11:57AM  
 PLC PLAT CORNER CER  
 Book: Page: # Pages: 1  
 Total Fees: \$7.00

WILKE LAND SURVEYING INC. 401 1800th Street Panama, Iowa 51562 (712)489-2898

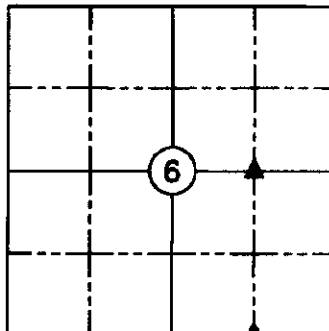
**UNITED STATES PUBLIC LAND SURVEY CORNER CERTIFICATE**

SECTION 6 TOWNSHIP 83N RANGE 38W COUNTY CRAWFORD  
 Reason for Certificate: (No record Certificate)

Monument Description and Remarks:

NE CORNER NW1/4 SE1/4 - Set 5/8" diameter by 24" rebar with orange cap PLS #17048 (flush) at the midpoint of the North line of the Southeast Quarter.

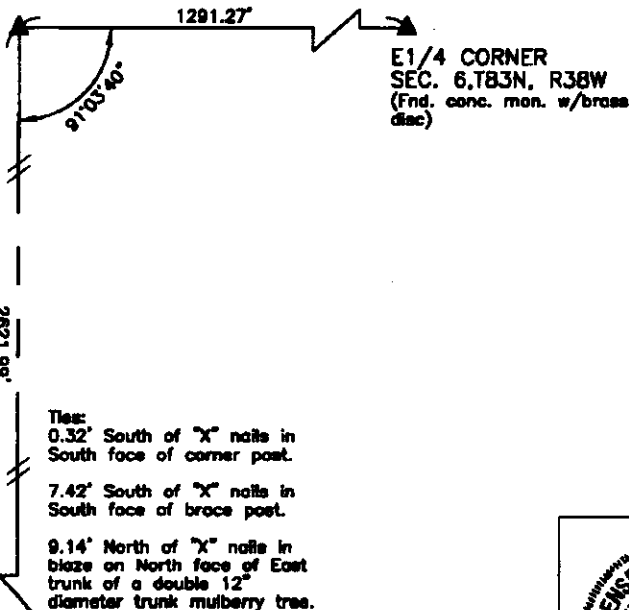
SE CORNER SW1/4 SE1/4 - Set 5/8" diameter by 24" rebar with orange cap PLS #17048 (flush) on the South side of old corner post with fences running North and South. Found old wire grown into trees to the West supporting corner location.



NE CORNER  
 NW1/4 SE1/4  
 SEC. 6, T83N, R38W  
 (Set 5/8" dia. by 24" rebar  
 w/orange cap PLS #17048,  
 flush with ground)

Ties:  
 11.35' SE of "X" nails in  
 top of fence division corner  
 post.

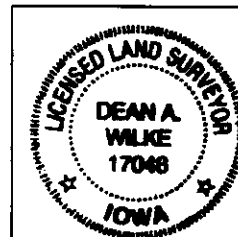
2.1' East of existing fence  
 line South.



E1/4 CORNER  
 SEC. 6, T83N, R38W  
 (Fnd. conc. mon. w/brass  
 disc)

Ties:  
 0.32' South of "X" nails in  
 South face of corner post.  
 7.42' South of "X" nails in  
 South face of broce post.  
 9.14' North of "X" nails in  
 blaze on North face of East  
 trunk of a double 12"  
 diameter trunk mulberry tree.

SE CORNER  
 SW1/4 SE1/4  
 SEC. 6, T83N, R38W  
 (Set 5/8" dia. by 24" rebar  
 w/orange cap PLS #17048,  
 flush with ground)



\*\*ALL DISTANCES ARE PLUMB\*\*

List Corners to be Indexed			
Corner	Section	Twp.	Range
NE CORNER NW1/4 SE1/4	6	83N	38W
SE CORNER SW1/4 SE1/4	6	83N	38W

I hereby certify that this land surveying document was prepared and the related survey work was performed by me or under my direct personal supervision and that I am a duly licensed Land Surveyor under the laws of the State of Iowa.

*Dean A. Wilke* 7/24/13  
 Dean A. Wilke Date

License number 17048  
 My license renewal date is December 31, 2013  
 Pages or sheets covered by this seal: This page only