

INDEX _____
 SCAN _____
 FOLLOW UP _____
 PROOF _____

Instrument #: 2026-0201
 02/02/2026 08:59:33 AM Total Pages: 1
 PLC PLAT COR CERT
 Recording Fee: \$7.00 Transfer Tax: \$0
 Sara Meseck, Recorder, Crawford County Iowa



WILKE LAND SURVEYING INC. 401 1800th Street Panama, Iowa 51562 (712)579-0551

UNITED STATES PUBLIC LAND SURVEY CORNER CERTIFICATE

SECTION 9 TOWNSHIP 83N RANGE 38W COUNTY Crawford

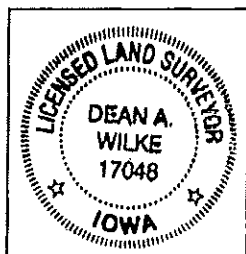
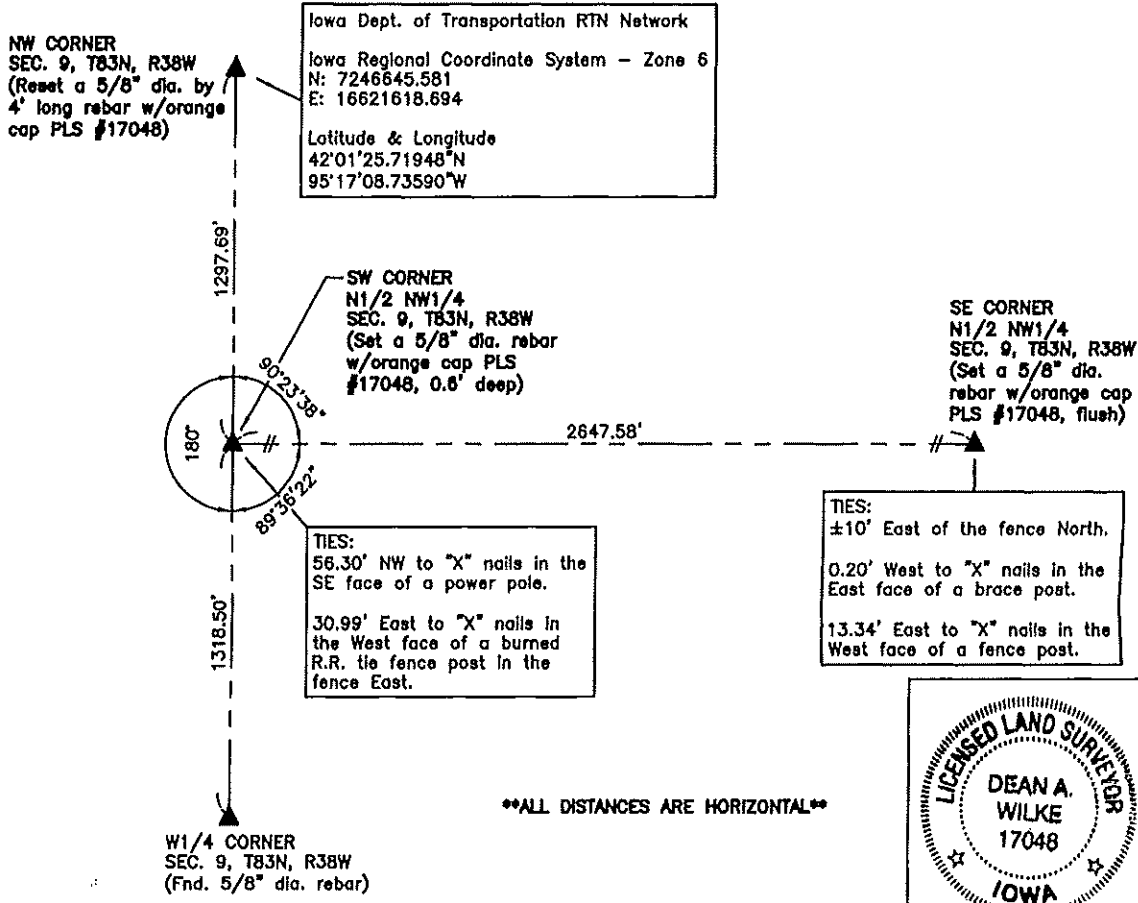
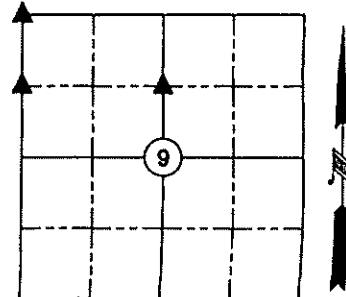
Monument Description and Remarks:

Reason for Certificate: Survey in the N1/2 NW1/4

NW CORNER - Calculated location previously used for a survey of record as Inst. No. 2011-2429 in Section 5. Said calculated location is the former location of an iron pin (now gone from creek bank erosion) that had been used by numerous private and I.D.O.T. surveys. Reset a 5/8" diameter by 4' long rebar with an orange cap PLS #17048 on the West bank of the creek. The set monument is ±1.0' East of the West top of bank and ±2.6' below said West top of bank. No suitable ties available. Also found a small portion of a broken off concrete monument lying sideways ±26' North of the set monument. Said broken concrete monument appears to have been moved and was not used.

SW CORNER N1/2 NW1/4 - Set a 5/8" diameter by 24" long rebar with an orange cap PLS #17048 (0.6' deep) on the West line of said NW1/4 and in line with the old fence East.

SE CORNER N1/2 NW1/4 - Set a 5/8" diameter by 24" long rebar with an orange cap PLS #17048 (flush) on the East line of said NW1/4 and in the East/West fence line. The set monument is ±10' East of the fence North.



List Corners to be Indexed			
Corner	Section	Twp.	Range
NW CORNER	9	83N	38W
SW CORNER N1/2 NW1/4	9	83N	38W
SE CORNER N1/2 NW1/4	9	83N	38W

I hereby certify that this land surveying document was prepared and the related survey work was performed by me or under my direct personal supervision and that I am a duly Licensed Land Surveyor under the laws of the State of Iowa.

Dean A. Wilke 1/23/26
 Dean A. Wilke Date

License number 17048
 My license renewal date is December 31, 2027
 Pages or sheets covered by this seal: This page only