

Crawford County Recorder
 Denise Meeves
Fee Book 2008-2939
 10/23/2008 @09:43AM
 PLC PLAT CORNER CER # Pages: 1
 Book: Page: \$7.00
 Total Fees:

Handwritten notes and signatures in the top right corner.

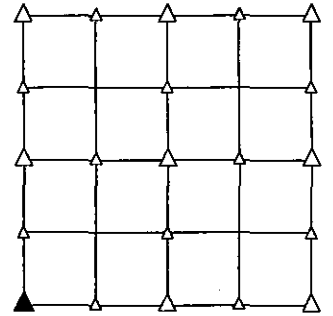
PREPARED BY - TERENCE E. CRAWFORD - SUNDQUIST ENGINEERING - 120 S. MAIN, DENISON, IOWA 51442 - PHONE (712) 263-8118

**UNITED STATES PUBLIC LAND SURVEY CORNER CERTIFICATE
 OF**

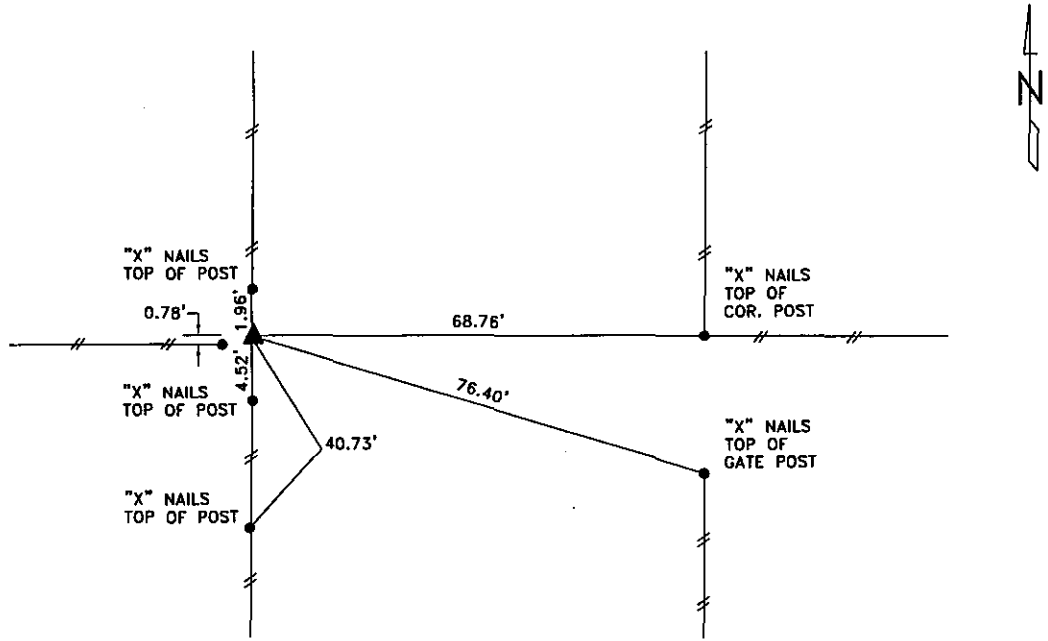
LAND SURVEY MONUMENT SITUATED IN SECTION 12, T 84 N, R 39 W OF
 THE 5TH P.M., CRAWFORD COUNTY, IOWA.
 PREVIOUSLY RECORDED IN BOOK _____, PAGE _____, OTHER _____

MONUMENT DESCRIPTION AND REMARKS

SW CORNER - SET 5/8" DIA. X 18" IRON PIN W/YELLOW CAP #8893
 FLUSH, SET FROM PREVIOUS SURVEY INFORMATION AND
 TIES.



PLAN VIEW SHOWING RELATIVE LOCATION OF MONUMENT AND REFERENCE POINTS.

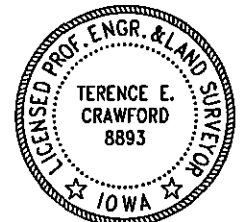


DISTANCES PLUMB CHAINED

SW CORNER SECTION 12-84-39

I HEREBY CERTIFY THAT THIS LAND SURVEYING DOCUMENT WAS PREPARED
 AND THE RELATED SURVEY WORK WAS PERFORMED BY ME OR UNDER MY
 DIRECT PERSONAL SUPERVISION AND THAT I AM A DULY LICENSED LAND
 SURVEYOR UNDER THE LAWS OF THE STATE OF IOWA.

Signature of Terence E. Crawford
 TERENCE E. CRAWFORD DATE OCT 15 2008
 IA LICENSE NO. 8893 EXP. DATE DECEMBER 31, 2009



SE PROJECT NO. 02008-43
 DRAWN BY: LLL