

INDEXED _____
 FOLLOW UP _____
 PROCEED _____
 SCANNED _____

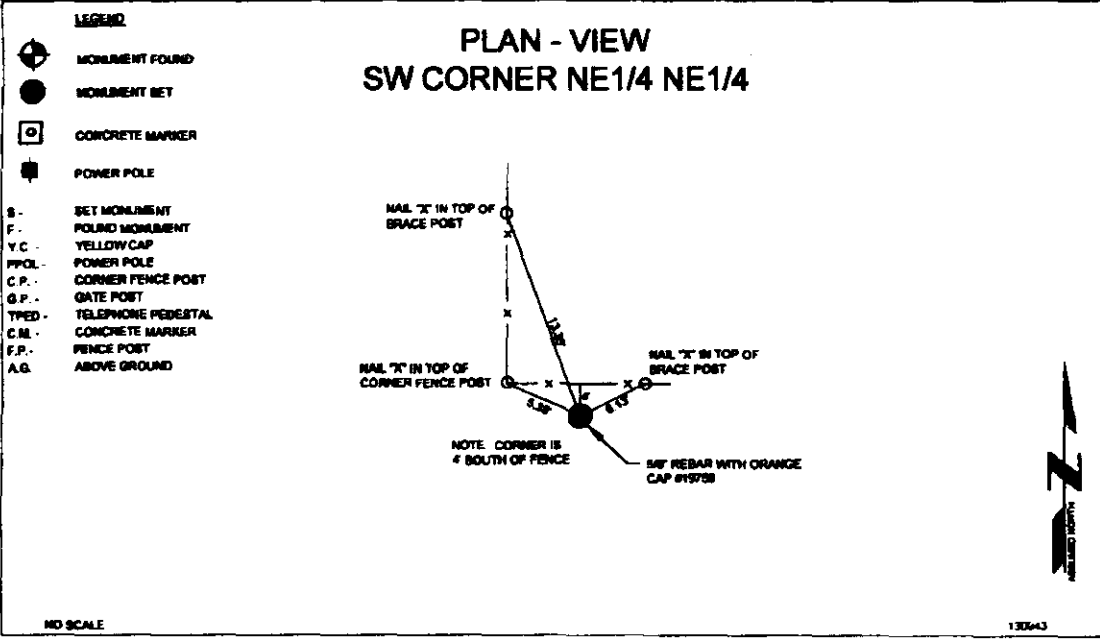
MYRON G. DARINGER PLS. JEO CONSULTING GROUP, INC., 724 SIMON AVENUE, CARROLL, IOWA 51401, 712-782-8711

UNITED STATES PUBLIC LAND SURVEY CORNER CERTIFICATE

LAND SURVEY MONUMENT
 SW CORNER NE1/4 NE1/4 SEC. 23, T84N, R39W
 CRAWFORD COUNTY, IOWA
 MONUMENT DESCRIPTION AND REMARKS:

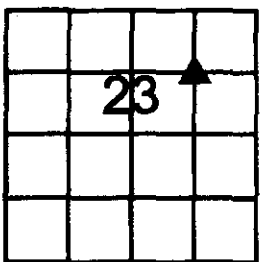
REASON FOR SECTION CORNER CERTIFICATE:
 ___ THERE IS NO CERTIFICATE FOR THE CORNER ON FILE WITH THE RECORDER OF COUNTY IN WHICH THE CORNER IS LOCATED
 ___ THE SURVEYOR IN RESPONSIBLE CHARGE OF THE LAND SURVEYING ACCEPTS A CORNER POSITION WHICH DIFFERS FROM THAT SHOWN IN THE PUBLIC RECORDS OF THE COUNTY IN WHICH THE CORNER IS LOCATED.
 ___ THE CORNER MONUMENT IS REPLACED OR MODIFIED IN ANY WAY
 ___ THE REFERENCE TIES IN AN EXISTING PUBLIC RECORD ARE INCORRECT OR MISSING
 ___ OTHER

DESCRIPTION OF MONUMENT:
 MATERIAL - 6" REBAR WITH ORANGE CAP #19758
 DEPTH -
 OTHER - SET PIN BY PROPORTIONING CORNER FALLS IN LINE WITH OLD CORNER FENCE POST



I HEREBY CERTIFY THAT THIS LAND SURVEYING DOCUMENT WAS PREPARED AND THE RELATED SURVEY WORK WAS PERFORMED BY ME OR UNDER MY DIRECT PERSONAL SUPERVISION AND THAT I AM A DULY LICENSED LAND SURVEYOR UNDER THE LAWS OF THE STATE OF IOWA.

Myron G. Daringer 9/5/13
 SIGNATURE DATE
 MYRON G. DARINGER
 PRINTED OR TYPED NAME
 19758
 MY LICENSE RENEWAL DATE IS DECEMBER 31, 2013
 PAGES OR SHEETS COVERED BY THIS SEAL
 THIS SHEET



LIST CORNER TO BE INDEXED

CORNER	SECTION	TWP	RANGE
SW NE1/4	23	84	39
NE1/4			

DRAWN BY: KSL QADC: MCH