

Instrument #: 2018-0058
 01/08/2018 09:54:55 AM Total Pages: 1
 PLC PLAT CORNER CER
 Recording Fee: \$7.00 Transfer Tax: \$0
 Denise Meeves, Recorder, Crawford County Iowa



WILKE LAND SURVEYING INC. 401 1800th Street Panama, Iowa 51562 (712)489-2898

UNITED STATES PUBLIC LAND SURVEY CORNER CERTIFICATE

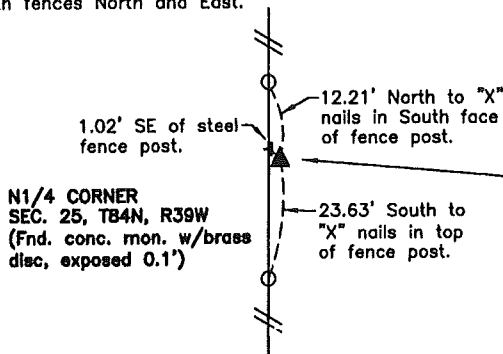
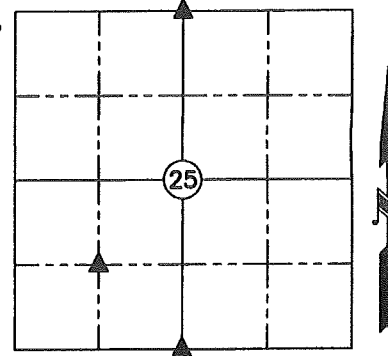
SECTION 25 TOWNSHIP 84N RANGE 39W COUNTY CRAWFORD

Monument Description and Remarks: Reason for Certificate: Survey in the S1/2 SW1/4

N1/4 CORNER - Found a concrete monument with a brass disc with the top 1.3' broke off but still attached by reinforcement wire inside the monument. The broken portion was plumbed up on top of the base and backfilled. The top of the monument is now exposed 0.1' above the ground surface. Placed a 5/8" diameter rebar along the North side of the monument for detection purposes only. The monument is 0.8' East of a North/South fence and approximately 417' South of the physical centerline of Deloit Boulevard.

S1/4 CORNER - The Corner is located in a deep cut area on a dirt surfaced minimum maintenance road. Old WPA notes were used to calculate an approximate location for the monument. A 5' x 5' area was probed extensively to a depth of 4', but the monument was not found. Set a 5/8" diameter by 24" long rebar with an orange cap PLS #17048 (1.0' deep) on line between the SW Corner & SE Corner, and in line with an old property fence to the North. The monument location fits well with the centerline of L Avenue as currently traveled.

NE CORNER SW1/4 SW1/4 - Set a 5/8" diameter by 24" long rebar with an orange cap PLS #17048 (flush) on the Southwest side of a fence corner post with fences North and East.



****NOTE:**
 The survey that these Corners were found or set for was canceled prior to being finished. No survey will be filed at this time.**

IA RCS ZONE 6 COORDINATES
 N: 7261791.05
 E: 16608657.86

LATITUDE & LONGITUDE
 42°03'55.96332" N
 95°19'59.50457" W

IA RCS ZONE 6 COORDINATES
 N: 7256539.68
 E: 16608617.33

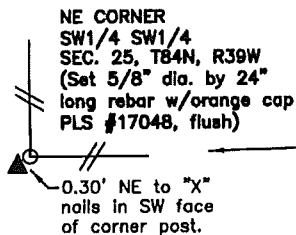
LATITUDE & LONGITUDE
 42°03'04.09124" N
 95°20'00.36745" W

(ALL DISTANCES ARE HORIZONTAL)

SW CORNER
 SEC. 25, T84N, R39W
 (Fnd. iron pin w/yellow cap PLS #14808)

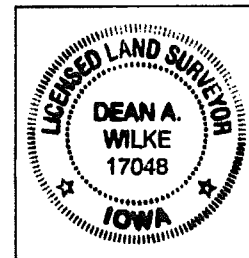
S1/4 CORNER
 SEC. 25, T84N, R39W
 (Set 5/8" dia. by 24" long rebar w/orange cap PLS #17048, 1.0' deep)

SE CORNER
 SEC. 25, T84N, R39W
 (Fnd. iron pin w/yellow cap PLS #8893)



IA RCS ZONE 6 COORDINATES
 N: 7257853.43
 E: 16607304.73

LATITUDE & LONGITUDE
 42°03'17.12891" N
 95°20'17.68399" W



List Corners to be Indexed

Corner	Section	Twp.	Range
N1/4 CORNER	25	84N	39W
S1/4 CORNER	25	84N	39W
NE CORNER SW1/4 SW1/4	25	84N	39W

I hereby certify that this land surveying document was prepared and the related survey work was performed by me or under my direct personal supervision and that I am a duly licensed Land Surveyor under the laws of the State of Iowa.

Dean A. Wilke 1/04/18
 Dean A. Wilke Date

License number 17048

My license renewal date is December 31, 2017

Pages or sheets covered by this seal: This page only