

NOTED \_\_\_\_\_  
 RECORDED \_\_\_\_\_  
 INDEXED \_\_\_\_\_  
 SEARCHED \_\_\_\_\_

Crawford County Recorder  
 Denise Meeves  
**Fee Book 2009-0220**

01/30/2009 @01:47PM  
 PIC PLAT CORNER CER # Pages: 1  
 Book: Page: \$7.00  
 Total Fees:

WILKE LAND SURVEYING INC. 401 1800th Street Panama, Iowa 51562 (712)489-2898

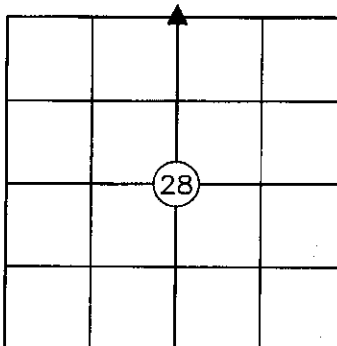
# UNITED STATES PUBLIC LAND SURVEY CORNER CERTIFICATE

SECTION 28 TOWNSHIP 84N RANGE 39W COUNTY CRAWFORD

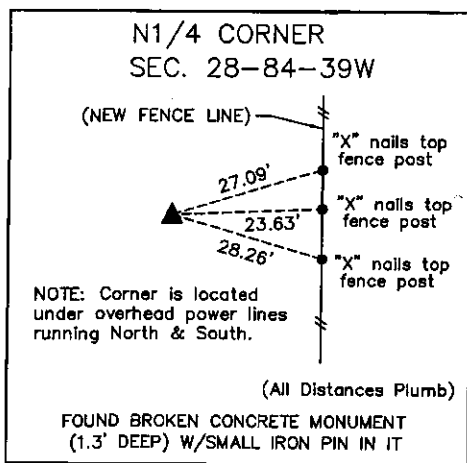
Certificate Prepared For: Survey of Lot 1 of the SE1/4 NW1/4  
 (To update ties for this corner)

Monument Description and Remarks:

Found broken top concrete monument with a small iron pin in it (1.3' deep) using information from the Crawford County Engineer's Office.



	<p>I hereby certify that this land surveying document was prepared and the related survey work was performed by me or under my direct personal supervision and that I am a duly licensed Land Surveyor under the laws of the State of Iowa.</p> <p><i>Dean A. Wilke</i> 1/29/09          Dean A. Wilke Date</p>
	<p>License number 17048          My license renewal date is December 31, 2009          Pages or sheets covered by this seal: <u>This page only</u></p>



List Corners to be Indexed			
Corner	Section	Twp.	Range
N1/4 CORNER	28	84N	39W