

INDEX SM
 SCAN _____
 FOLLOW UP _____
 PROOF _____

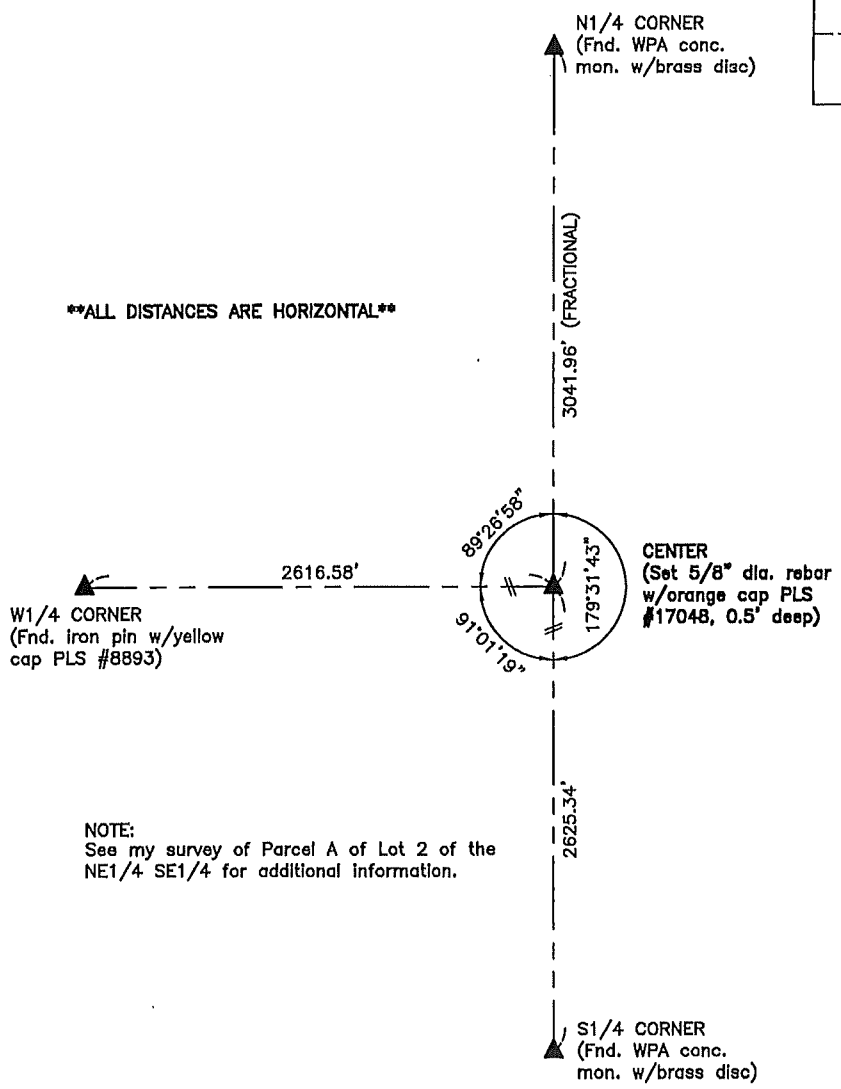
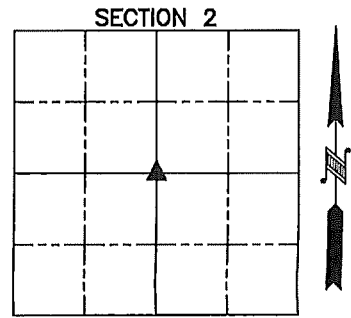
Instrument #: 2022-3019
 12/19/2022 09:20:12 AM Total Pages: 1
 PLC PLAT COR CERT
 Recording Fee: \$7.00 Transfer Tax: \$0
 Denise Neeves, Recorder, Crawford County Iowa

WILKE LAND SURVEYING INC. 401 1800th Street Panama, Iowa 51562 (712)489-2898

UNITED STATES PUBLIC LAND SURVEY CORNER CERTIFICATE
 SECTION 2 TOWNSHIP 84N RANGE 39W COUNTY Crawford
 Reason for Certificate: Survey in the NE1/4 SE1/4

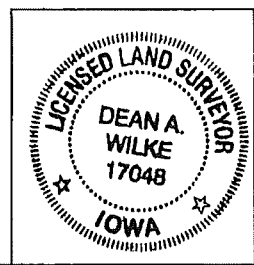
Monument Description and Remarks:

CENTER - Set a 5/8" diameter rebar with an orange cap PLS #17048 (0.5' deep) on the North side of a steel pipe fence corner post in concrete leaning badly East. There are remnants of fences West & South from said corner post. The set monument is 11.59' West of a straight line from the N1/4 Corner to the S1/4 Corner. No suitable ties available.



ALL DISTANCES ARE HORIZONTAL

NOTE:
 See my survey of Parcel A of Lot 2 of the NE1/4 SE1/4 for additional information.



List Corners to be Indexed			
Corner	Section	Twp.	Range
CENTER	2	84N	39W

I hereby certify that this land surveying document was prepared and the related survey work was performed by me or under my direct personal supervision and that I am a duly licensed Land Surveyor under the laws of the State of Iowa.

Dean A. Wilke 12/14/22
 Dean A. Wilke Date

License number 17048
 My license renewal date is December 31, 2023
 Pages or sheets covered by this seal: This page only