

INDEX Km
 SCAN _____
 FOLLOW UP _____
 PROOF _____

Instrument #: 2026-0679
 04/05/2026 03:22:58 PM Total Pages: 1
 PLC PLAT COR CERT
 Recording Fee: \$7.00 Transfer Tax: \$0
 Sara Heseck, Recorder, Crawford County Iowa



WILKE LAND SURVEYING INC. 401 1800th Street Panama, Iowa 51562 (712)579-0551

UNITED STATES PUBLIC LAND SURVEY CORNER CERTIFICATE

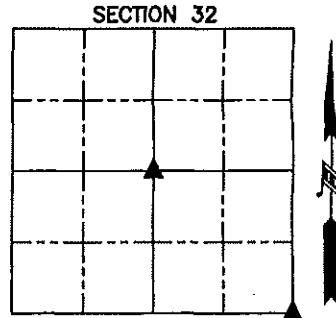
SECTION 32 TOWNSHIP 84N RANGE 39W COUNTY Crawford

Monument Description and Remarks:

Reason for Certificate: Survey in the E1/2

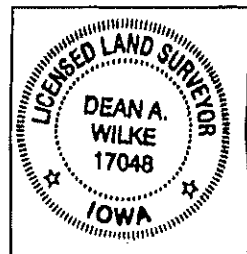
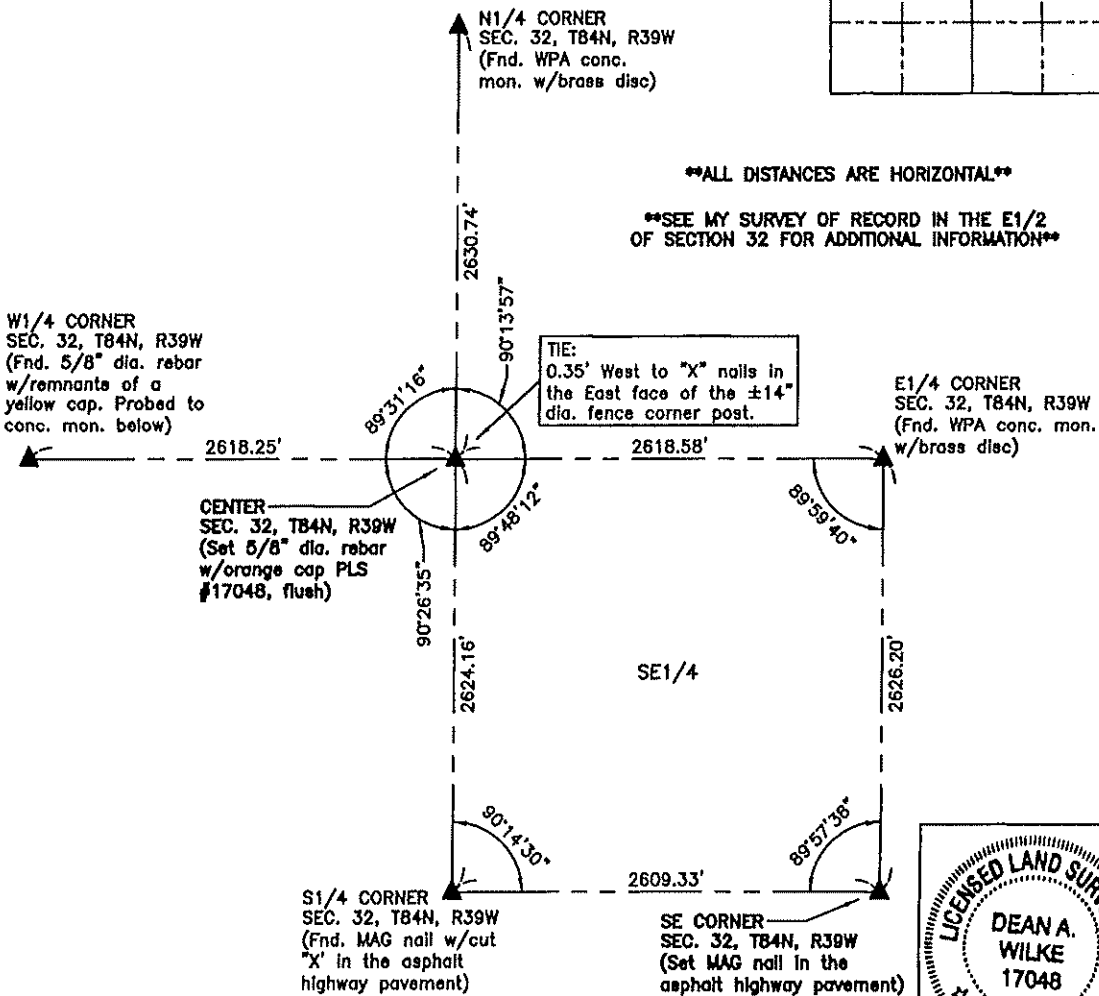
CENTER - Set a 5/8" diameter by 24" long rebar with an orange cap PLS #17048 (flush) on the East side of the corner post with fences North, South, and West. The set monument is 5.63' South of a straight line from E1/4 Corner to W1/4 Corner, and 0.82' East of a straight line from the N1/4 Corner to S1/4 Corner.

SE CORNER - No monument was found. Reset a MAG nail in the asphalt highway pavement using monuments and data from the PLS #4129 survey of record as Inst. No. 93-1905. No suitable ties available.



****ALL DISTANCES ARE HORIZONTAL****

****SEE MY SURVEY OF RECORD IN THE E1/2 OF SECTION 32 FOR ADDITIONAL INFORMATION****



I hereby certify that this land surveying document was prepared and the related survey work was performed by me or under my direct personal supervision and that I am a duly licensed Land Surveyor under the laws of the State of Iowa.

Dean A. Wilke 4/02/2026
 Dean A. Wilke Date

License number 17048
 My license renewal date is December 31, 2027
 Pages or sheets covered by this seal: This page only

List Corners to be Indexed			
Corner	Section	Twp.	Range
CENTER	32	84N	39W
SE CORNER	32	84N	39W