

INDEX DM/DM  
 SCAN DM  
 FOLLOW UP DM  
 PROOF SM

Instrument #: 2022-0734  
 03/18/2022 09:54:17 AM Total Pages: 1  
 PLC PLAT COR CERT  
 Recording Fee: \$0.00 Transfer Tax: \$0  
 Denise Meeves, Recorder, Crawford County Iowa



PREPARED BY: PAUL ASSMAN-CRAWFORD COUNTY ENGINEER'S OFFICE-COURTHOUSE-DENISON, IA.-712-263-2449

## UNITED STATES PUBLIC LAND SURVEY CORNER CERTIFICATE OF

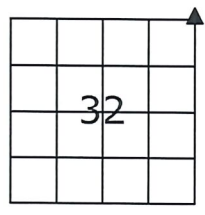
LAND SURVEY MONUMENT SITUATED IN GOODRICH TOWNSHIP, NORTHEAST CORNER OF SECTION 32, T-84N,  
R-39W OF THE FIFTH P.M. CRAWFORD COUNTY, IOWA.

PREVIOUSLY RECORDED IN GOODRICH TWP. FIELD BOOK PG 64, COUNTY ENGINEERS OFFICE

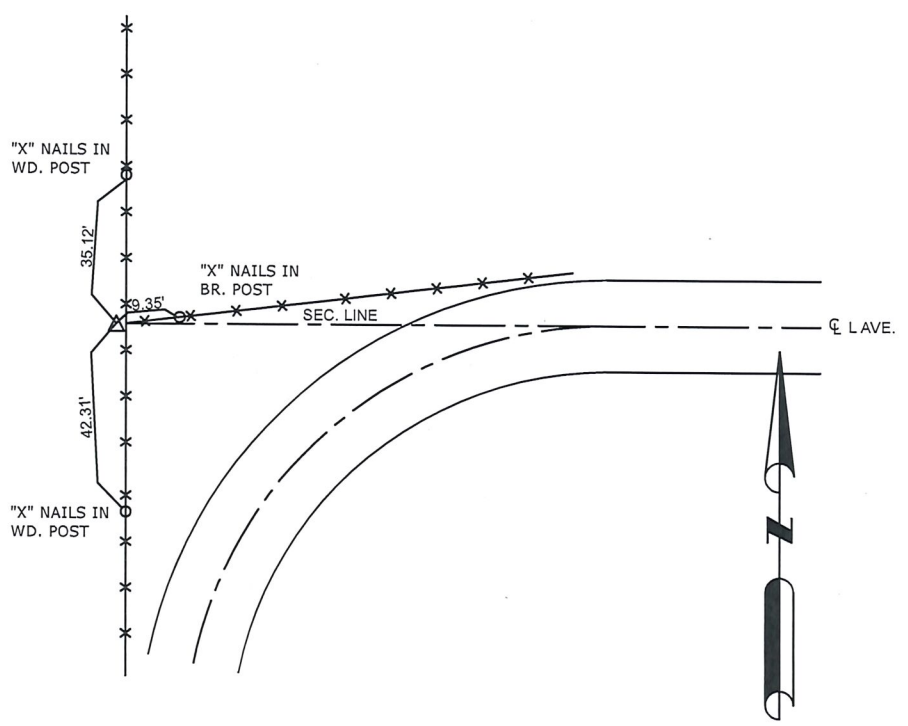
### MONUMENT DESCRIPTION AND REMARKS

NORTHEAST CORNER SEC. 32-84-39

FOUND CONC. MONUMENT AT SURFACE  
 COUNTY GRADED ROAD, CORNER WAS UNDISTURBED AND  
 RETIED




NORTHEAST CORNER SEC. 32-84-39



ALL TIE DISTANCES ARE MEASURED HORIZONTALLY USING GPS

**CERTIFICATION:**

I HEREBY CERTIFY THAT THIS LAND SURVEYING DOCUMENT WAS PREPARED AND THE RELATED SURVEY WORK WAS PERFORMED BY ME OR UNDER MY DIRECT PERSONAL SUPERVISION AND THAT I AM A DULY LICENSED LAND SURVEYOR UNDER THE LAWS OF THE STATE OF IOWA.

  
 Signature

3/16/22  
 Date of Survey

PAUL J. ASSMAN                      11982                      12-31-22  
 Typed Name                      L.S. No.                      License Renewal Date

Pages covered by this seal 1

