

INDEXED _____
 FOLLOW UP _____
 PROOFED _____
 SCANNED _____

Instrument #: 2020-2934
 12/31/2020 09:39:30 AM Total Pages: 1
 PLC PLAT COR CERT
 Recording Fee: \$7.00 Transfer Tax: \$0
 Denise Reeves, Recorder, Crawford County Iowa



WILKE LAND SURVEYING INC. 401 1800th Street Panama, Iowa 51562 (712)489-2898

UNITED STATES PUBLIC LAND SURVEY CORNER CERTIFICATE

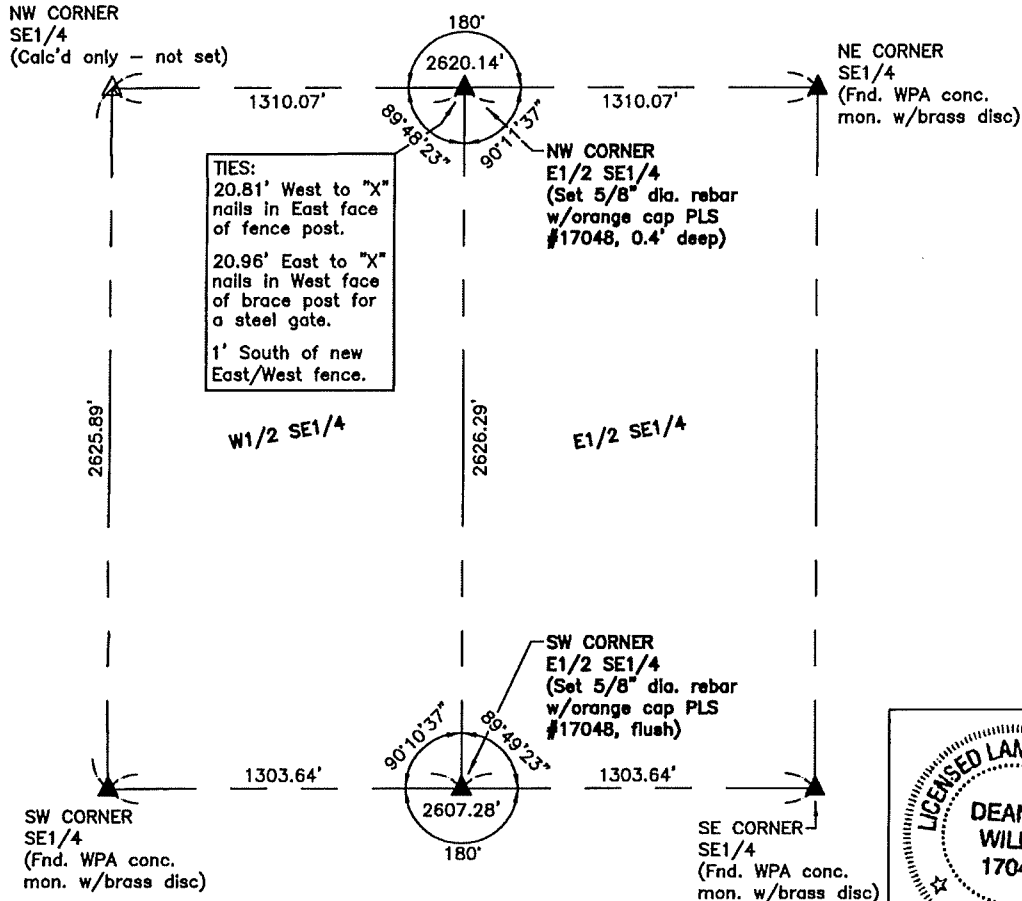
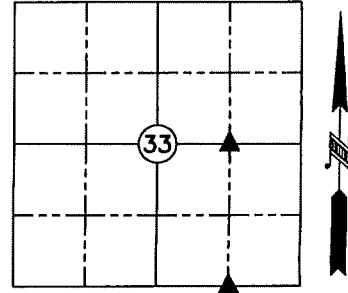
SECTION 33 TOWNSHIP 84N RANGE 39W COUNTY CRAWFORD

Reason for Certificate: Survey in the SE1/4

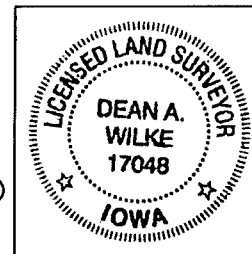
Monument Description and Remarks:

NW CORNER E1/2 SE1/4 - Set a 5/8" diameter by 24" long rebar with an orange cap PLS #17048 (0.4' deep) at the midpoint of the North line of the SE1/4. The set monument is 1' South of a new East/West fence. Drove a steel fence post on the North side of the set monument.

SW CORNER E1/2 SE1/4 - Set a 5/8" diameter by 24" long rebar with an orange cap PLS #17048 (flush) at the midpoint of the South line of the SE1/4. The set monument is in the old East/West fence. Drove a steel fence post on the North side of the set monument. No suitable ties available.



****ALL DISTANCES ARE HORIZONTAL****



I hereby certify that this land surveying document was prepared and the related survey work was performed by me or under my direct personal supervision and that I am a duly licensed Land Surveyor under the laws of the State of Iowa.

Dean A. Wilke 12/28/2020
 Dean A. Wilke /Date

License number 17048
 My license renewal date is December 31, 2021
 Pages or sheets covered by this seal: This page only

List Corners to be Indexed			
Corner	Section	Twp.	Range
NW CORNER E1/2 SE1/4	33	84N	39W
SW CORNER E1/2 SE1/4	33	84N	39W