

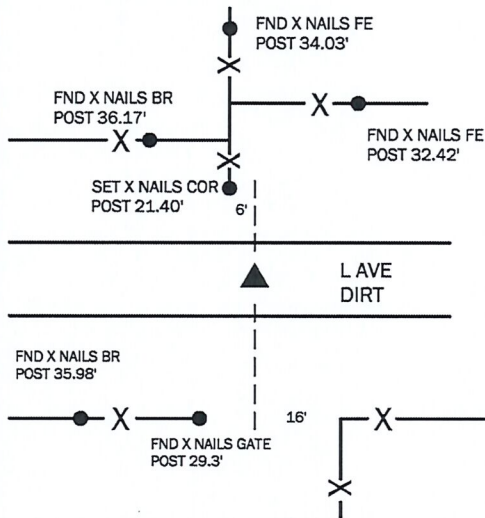
Denise Meeves RECORDER
 Crawford County, Iowa
 Instr. Number: 2019-1556
 Recorded: 8/30/2019 at 10:45:08.0 AM
 Pages 1
 County Recording Fee: \$7.00
 Iowa E-Filing Fee: \$3.13
 Combined Fee: \$10.13
 Revenue Tax:

PREPARED BY AND RETURN TO: MIKE SCHULTE, SCHULTE SURVEYING, INC., 2003 390TH STREET, WESTSIDE, IA 51467 (712) 790-3489

UNITED STATES PUBLIC LAND SURVEY CORNER CERTIFICATE OF

LAND SURVEY MONUMENTS SITUATED IN SECTION 33, TOWNSHIP 84 NORTH, RANGE 39 WEST, OF THE FIFTH PRINCIPAL MERIDIAN, CRAWFORD COUNTY, IOWA. PREVIOUSLY RECORDED IN SEE BELOW IN COUNTY RECORDER'S OFFICE.
(book, page instrument number)

N1/4 CORNER
 FND BROKEN C.M. 2" DEEP
 NORTHING EASTING
 7256571.62 16592908.00

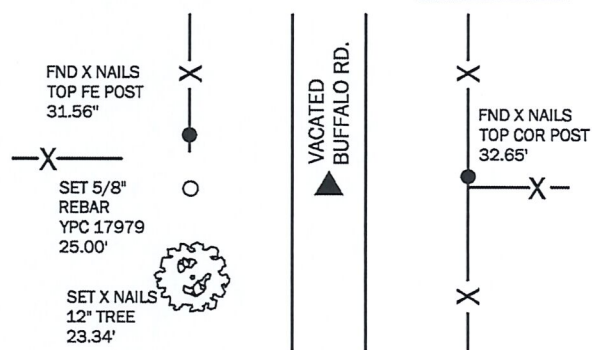


USED TIES RECORDED IN INST 2001-0322 TO FIND BROKEN CONCRETE MONUMENT 2" DEEP WITH REBAR ON SOUTH SIDE. MONUMENT MATCHES DESCRIPTION AND MOST OF THE TIE DISTANCES. SOME OF THE PREVIOUS TIES ARE NOW MISSING, SO ADDITIONAL REFERENCES WERE SET AND THIS CERTIFICATE DRAFTED.

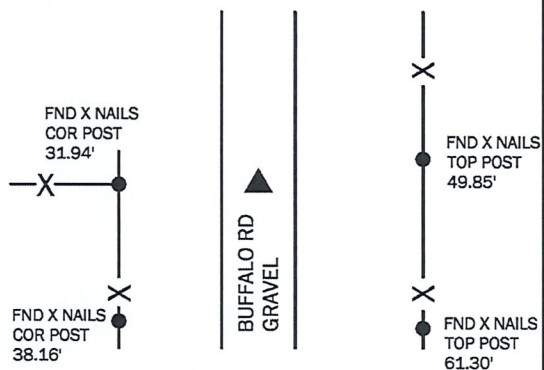
E1/4 CORNER
 FND CONCRETE MONUMENT 10" DEEP
 NORTHING EASTING
 7253954.62 16595534.74

USED TIES FROM COUNTY ENGINEER IN 2-18-2000 TO FIND CONCRETE MONUMENT 10" DEEP. A FEW OF THE TIES ARE NOW MISSING, SO RE-TIED CORNER.

NE CORNER
 SET 5/8" REBAR WITH YPC 17979 1' DEEP
 NORTHING EASTING
 7256579.38 16595536.94



USED TIES BY COUNTY ENGINEER IN 2-18-2000 TO SEARCH FOR 5/8" REBAR. THE ROAD IS NOW VACATED AND WASHED OUT SEVERELY. REBAR WAS NOT FOUND. USED THE E1/4 CORNER & 5/8" REBAR (SET FROM SURVEY IN THE NE1/4 87-1174) ON EAST LINE OF SECTION TO CALCULATE POSITION. POSITION FITS DISTANCE TO N1/4 CORNER VERY WELL AND FITS THE TIES WELL CONSIDERING THE SLOPE. SET 5/8" REBAR WITH YPC 17979 1' DEEP AND TIED OUT.



*All distances are measured horizontally unless noted.

LIST CORNERS TO BE INDEXED

CORNER	SECTION	TWP	RANGE
N1/4	33	84	39
S1/4	33	84	39
NE COR	33	84	39
SE COR	28	84	39
SW COR	27	84	39
NW COR	34	84	39
E1/4	33	84	39
W1/4	34	84	39

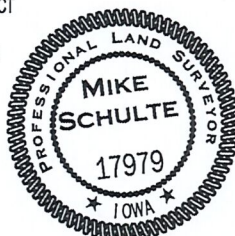
BASIS OF BEARING

laRCS ZONE 6 - US SURVEY FEET
 laRTN DERIVED - NAD83(2011)(EPOCH 2010.00)

I HEREBY CERTIFY THAT THIS LAND SURVEYING DOCUMENT WAS PREPARED BY ME OR UNDER MY DIRECT PERSONAL SUPERVISION AND THAT I AM A DULY LICENSED PROFESSIONAL LAND SURVEYOR UNDER THE LAWS OF THE STATE OF IOWA.

Mike Schulte
 MIKE SCHULTE 2019/08/30
 DATE

LICENSE NUMBER: 17979
 LICENSE RENEWAL DATE IS DECEMBER 31, 2019
 PAGES COVERED BY THIS SEAL: 1 OF 1



SCHULTE SURVEYING, INC.

DRAWN BY: MLS
 PROJ NUMBER: 19-040