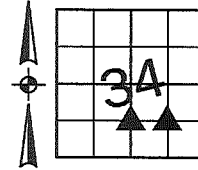


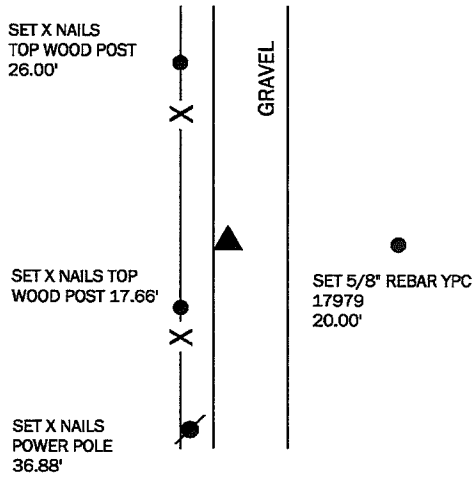
Denise Meeves RECORDER  
 Crawford County, Iowa  
 Instr. Number: 2017-1706  
 Recorded: 8/30/2017 at 12:26:57.0 PM  
 Pages 1  
 Fee Amount: \$7.00  
 Revenue Tax:

PREPARED BY AND RETURN TO: MIKE SCHULTE, SCHULTE SURVEYING, INC., 2003 390TH STREET, WESTSIDE, IA 51467 (712) 790-3489

**UNITED STATES PUBLIC LAND SURVEY CORNER CERTIFICATE OF**  
 LAND SURVEY MONUMENTS SITUATED IN SECTION 34, TOWNSHIP 84 NORTH, RANGE 39 WEST, OF THE FIFTH  
 PRINCIPAL MERIDIAN, CRAWFORD COUNTY, IOWA. PREVIOUSLY RECORDED IN SEE BELOW IN COUNTY  
(book, page instrument number)  
 RECORDER'S OFFICE.

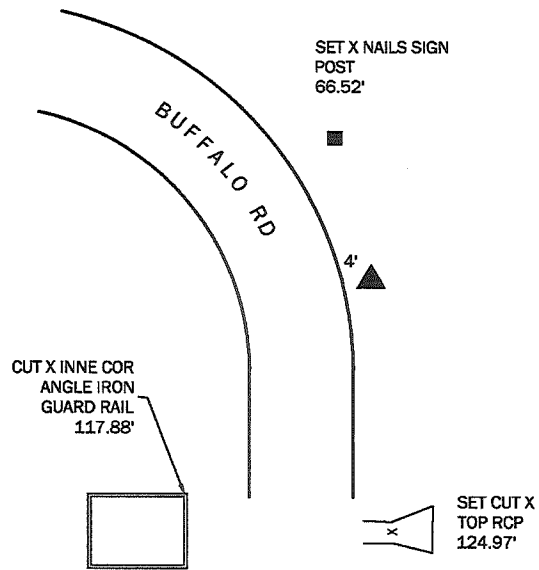


**NW CORNER SWSE**  
 FND 5/8" REBAR 2.7' DEEP SET 17979 OVER  
 N: 7252609.80 E: 16598143.16



USED TIES RECORDED IN FEE BK 2007-1624 TO START SEARCH. TIE MONUMENTS DID NOT HAVE CROSS NAILS AND WAS A LITTLE UNSURE OF POSITION. DUG 1.5' AND FOUND BRICKS & JUNK. COUNTY SURVEYOR STILL HAD POINTS IN DATA COLLECTOR FROM A PAVING JOB TO THE EAST AND STAKED OUT THE POSITION. DUG TO A DEPTH OF 2.7' AND FOUND 5/8" REBAR. FILLED HOLE AND SET 5/8" REBAR WITH YPC 17979 3" DEEP.

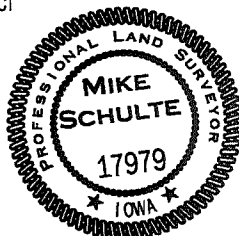
**NE CORNER SWSE**  
 FND 5/8" REBAR 1.5' DEEP - SET NEW REBAR 4" DEEP  
 N: 7252603.94 E: 16599454.23



TIES FROM FEE BOOK 2007-1626 HAVE BEEN TORN OUT FROM THE RECONSTRUCTION OF BUFFALO ROAD IN THIS AREA. COUNTY SURVEYOR STILL HAD POINTS IN HIS DATA COLLECTOR AND LOCATED THIS POSITION. DUG DOWN 1.5' AND FOUND A SHORT 5/8" REBAR. RESET POSITION WITH 24"x5/8" REBAR 4" DEEP.

I HEREBY CERTIFY THAT THIS LAND SURVEYING DOCUMENT WAS PREPARED BY ME OR UNDER MY DIRECT PERSONAL SUPERVISION AND THAT I AM A DULY LICENSED PROFESSIONAL LAND SURVEYOR UNDER THE LAWS OF THE STATE OF IOWA.

*Mike Schulte*  
 MIKE SCHULTE  
 LICENSE NUMBER: 17979  
 LICENSE RENEWAL DATE IS DECEMBER 31, 2017  
 PAGES COVERED BY THIS SEAL: 1 OF 1



\*All distances are measured horizontally unless noted.

**LIST CORNERS TO BE INDEXED**

CORNER	SECTION	TWP	RANGE
NW COR SWSE	34	84	39
NE COR SWSE	34	84	39

**BASIS OF BEARING**  
 IaRCS ZONE 6 - US SURVEY FEET  
 IaRTN DERIVED - NAD83(2011)(EPOCH 2010.00)

**SCHULTE SURVEYING, INC.**

DRAWN BY: MLS  
 PROJ NUMBER: 17-043