

INST. NO. 2002-0031
DENISE MEEVES, RECORDER
Denise Meeves
REC. # 62 Mary Citen, Deputy

PREPARED BY - PAUL J. ASSMAN - LICENSED LAND SURVEYOR - DENISON, IOWA 51442 - PHONE (712)263-8747

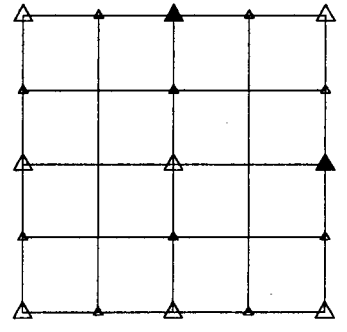
UNITED STATES PUBLIC LAND SURVEY CORNER CERTIFICATE

OF

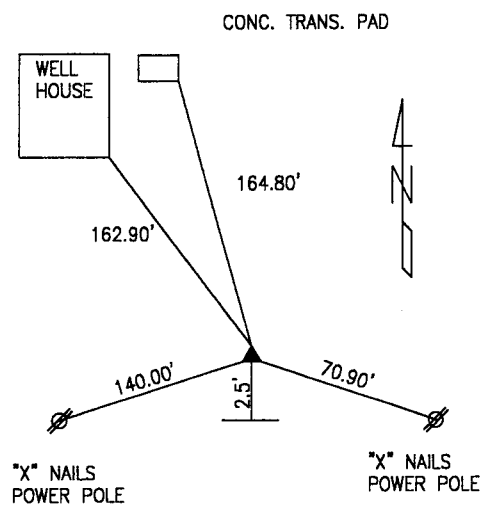
LAND SURVEY MONUMENT SITUATED IN SECTION 35, T 84 N, R 39 W OF THE 5TH P.M., CRAWFORD COUNTY, IOWA.

PREVIOUSLY RECORDED IN BOOK _____, PAGE _____, OTHER _____

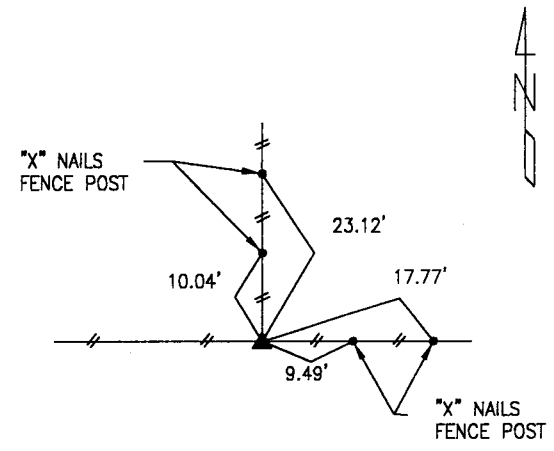
MONUMENT DESCRIPTION AND REMARKS
N 1/4 CORNER - FOUND BROKEN C.M. 10" DEEP
E 1/4 CORNER - FOUND CAPPED PIN #8893 IN TOP OF CORNER POST



PLAN VIEW SHOWING RELATIVE LOCATION OF MONUMENT AND REFERENCE POINTS

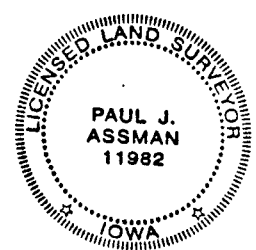


DISTANCES SLOPED CHAINED
N 1/4 CORNER SECTION 35-84-39



DISTANCES PLUMB CHAINED
E 1/4 CORNER SECTION 35-84-39

I HEREBY CERTIFY THIS LAND SURVEYING DOCUMENT WAS PREPARED AND THE RELATED SURVEY WORK WAS PERFORMED BY ME OR UNDER MY DIRECT SUPERVISION AND THAT I AM A DULY LICENSED LAND SURVEYOR UNDER THE LAWS OF THE STATE OF IOWA.



Paul J. Assman
PAUL J. ASSMAN
IA LICENSE NO. 11982
DATE 01/03/02
EXP. DATE DECEMBER 31, 2002

DRAWN BY SJW