

INDEXED         
FOLLOW UP         
PROOFED       

Instrument #: 2017-1519  
07/31/2017 03:03:35 PM Total Pages: 1  
PLC PLAT CORNER CER  
Recording Fee: \$0.00 Transfer Tax: \$0  
Denise Reeves, Recorder, Crawford County Iowa



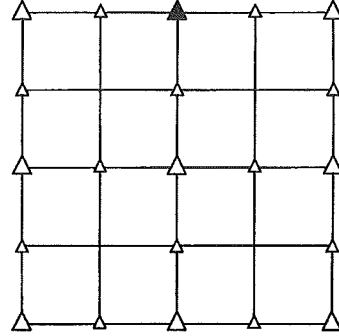
PREPARED BY - PAUL J. ASSMAN - CRAWFORD COUNTY ENGINEER'S OFFICE - DENISON, IOWA 51442 - PHONE (712)263-2449

## UNITED STATES PUBLIC LAND SURVEY CORNER CERTIFICATE OF

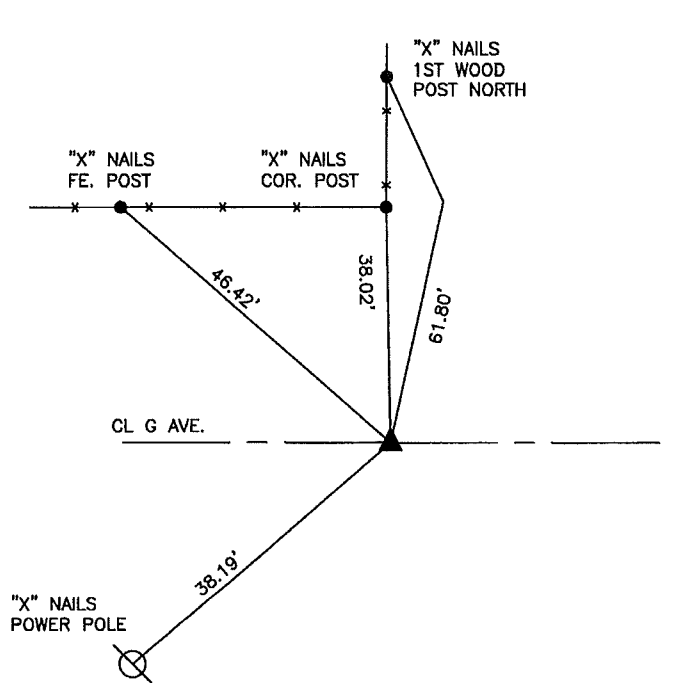
LAND SURVEY MONUMENT SITUATED IN SECTION   3  , T   84  N, R   39  W OF  
THE 5TH P.M.,           CRAWFORD           COUNTY, IOWA.  
PREVIOUSLY RECORDED IN BOOK           , PAGE           , OTHER           

### MONUMENT DESCRIPTION AND REMARKS

N1/4 CORNER - FOUND IRON PIN W/ORANGE CAP #5798 10" DEEP.



PLAN VIEW SHOWING RELATIVE LOCATION OF MONUMENT AND REFERENCE POINTS.



DISTANCES PLUMB CHAINED  
N1/4 CORNER  
SEC. 3-84-39

I HEREBY CERTIFY THAT THIS LAND SURVEYING DOCUMENT WAS PREPARED  
AND THE RELATED SURVEY WORK WAS PERFORMED BY ME OR UNDER  
MY DIRECT PERSONAL SUPERVISION AND THAT I AM A DULY LICENSED LAND  
SURVEYOR UNDER THE LAWS OF THE STATE OF IOWA.

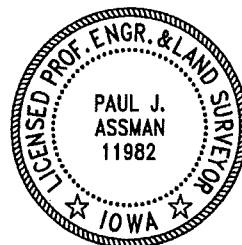
Paul J. Assman                      7/12/17

PAUL J. ASSMAN

DATE

IA LICENSE NO. 11982

EXP. DATE DECEMBER 31, 2018



SE PROJECT NO. 02517  
DRAWN BY: TKK