

INDEX
SCAN
FOLLOW UP
PROOF

Instrument #: 2025-2281
11/21/2025 09:51:56 AM Total Pages: 1
PLC PLAT COR CERT
Recording Fee: \$7.80 Transfer Tax: \$0
Sara Heseck, Recorder, Crawford County Iowa



PREPARED BY - TERENCE E. CRAWFORD - SUNDQUIST ENGINEERING - 120 S. MAIN, DENISON, IOWA 51442 - PHONE (712) 263-8118

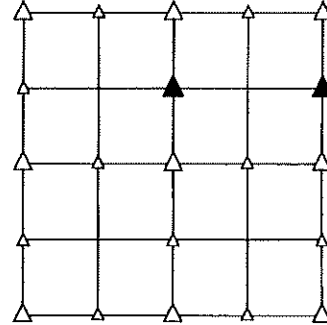
UNITED STATES PUBLIC LAND SURVEY CORNER CERTIFICATE OF

LAND SURVEY MONUMENT SITUATED IN SECTION 4, T 84 N, R 39 W OF
THE 5TH P.M., CRAWFORD COUNTY, IOWA.
PREVIOUSLY RECORDED IN BOOK , PAGE , OTHER

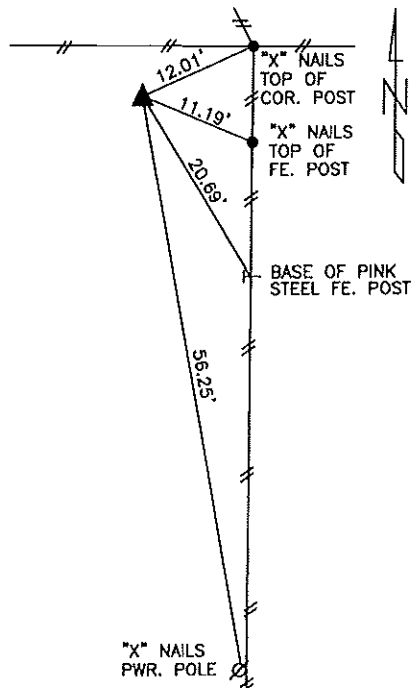
MONUMENT DESCRIPTION AND REMARKS

NW CORNER
SW1/4 NE1/4 - SET 5/8" DIA. X 18" IRON PIN W/YELLOW CAP
#8893 FLUSH. SET AT PRORATED DISTANCE
BETWEEN CENTER & N1/4 COR. OF SEC. 4.

NE CORNER
SE1/4 NE1/4 - SET 5/8" DIA. X 18" IRON PIN W/YELLOW CAP
#8893 FLUSH. SET AT PRORATED DISTANCE
BETWEEN E1/4 COR. & NE COR. OF SEC. 4.

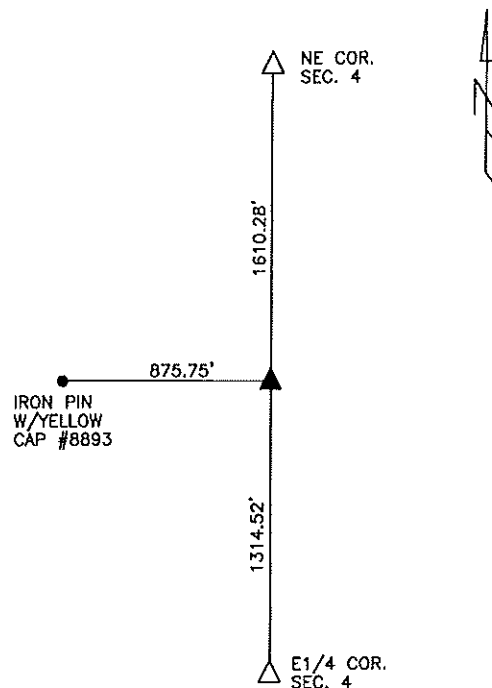


PLAN VIEW SHOWING RELATIVE LOCATION OF MONUMENT AND REFERENCE POINTS.



DISTANCES PLUMB CHAINED

NW CORNER SW1/4 NE1/4
SECTION 4-84-39

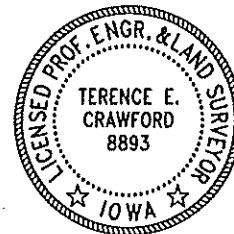


DISTANCES PLUMB CHAINED

NE CORNER SE1/4 NE1/4
SECTION 4-84-39

I HEREBY CERTIFY THAT THIS LAND SURVEYING DOCUMENT WAS PREPARED AND THE RELATED SURVEY WORK WAS PERFORMED BY ME OR UNDER MY DIRECT PERSONAL SUPERVISION AND THAT I AM A DULY LICENSED LAND SURVEYOR UNDER THE LAWS OF THE STATE OF IOWA.

Terence E. Crawford 11-7-25
TERENCE E. CRAWFORD DATE
IA LICENSE NO. 8893 EXP. DATE DECEMBER 31, 2025



SE PROJECT NO. 26925
DRAWN BY: LLL