



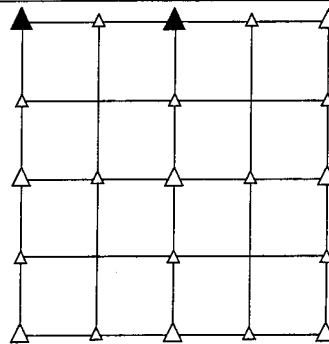
PREPARED BY - TERENCE E. CRAWFORD - SUNDQUIST ENGINEERING - 120 S. MAIN, DENISON, IOWA 51442 - PHONE (712) 263-8118

### UNITED STATES PUBLIC LAND SURVEY CORNER CERTIFICATE OF

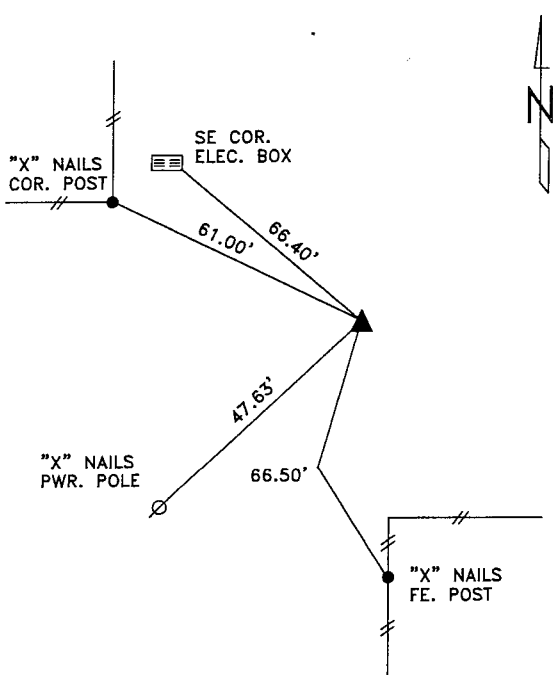
LAND SURVEY MONUMENT SITUATED IN SECTION 3, T 84 N, R 39 W OF  
THE 5TH P.M., CRAWFORD COUNTY, IOWA.  
PREVIOUSLY RECORDED IN BOOK \_\_\_\_\_, PAGE \_\_\_\_\_, OTHER \_\_\_\_\_

#### MONUMENT DESCRIPTION AND REMARKS

NW CORNER - FOUND IRON PIN W/CAP #5798 0.5' DEEP.  
N1/4 CORNER - FOUND IRON PIN W/CAP #5798 1.0' DEEP.

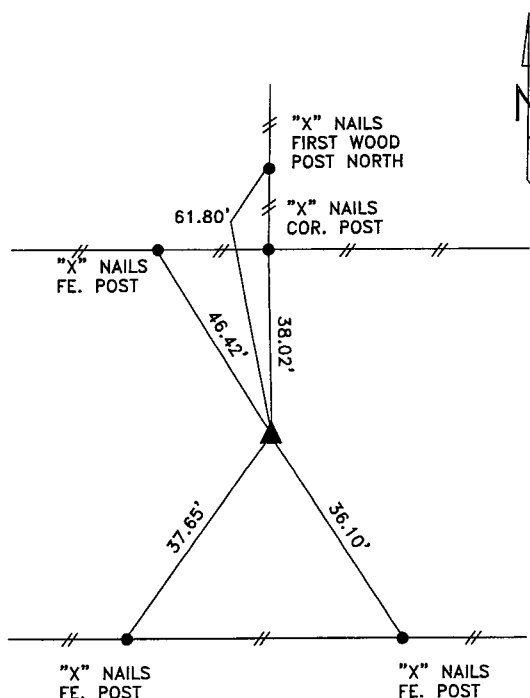


#### PLAN VIEW SHOWING RELATIVE LOCATION OF MONUMENT AND REFERENCE POINTS.



DISTANCES SLOPE CHAINED

NW CORNER SECTION 3-84-39



DISTANCES SLOPE CHAINED

N1/4 CORNER SECTION 3-84-39

I HEREBY CERTIFY THAT THIS LAND SURVEYING DOCUMENT WAS PREPARED AND THE RELATED SURVEY WORK WAS PERFORMED BY ME OR UNDER MY DIRECT SUPERVISION AND THAT I AM A DULY LICENSED LAND SURVEYOR UNDER THE LAWS OF THE STATE OF IOWA.

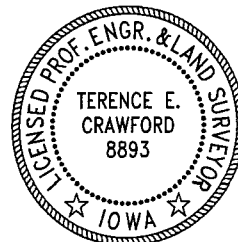
*Terence E. Crawford*  
TERENCE E. CRAWFORD

IA LICENSE NO. 8893

DEC 28 2004

DATE

EXP. DATE DECEMBER 31, 2005



SE PROJECT NO. 25104  
DRAWN BY: LLL