

INDEXED DM/DM  
FOOTNOTED \_\_\_\_\_  
PROCESSED ME  
SEARCHED \_\_\_\_\_

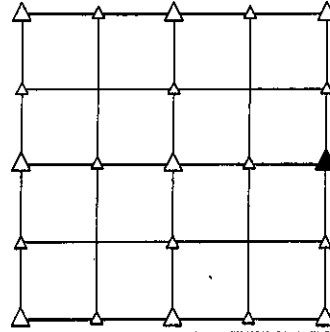
PREPARED BY - TERENCE E. CRAWFORD - SUNDQUIST ENGINEERING - 120 S. MAIN, DENISON, IOWA 51442 - PHONE (712) 263-8118

## UNITED STATES PUBLIC LAND SURVEY CORNER CERTIFICATE OF

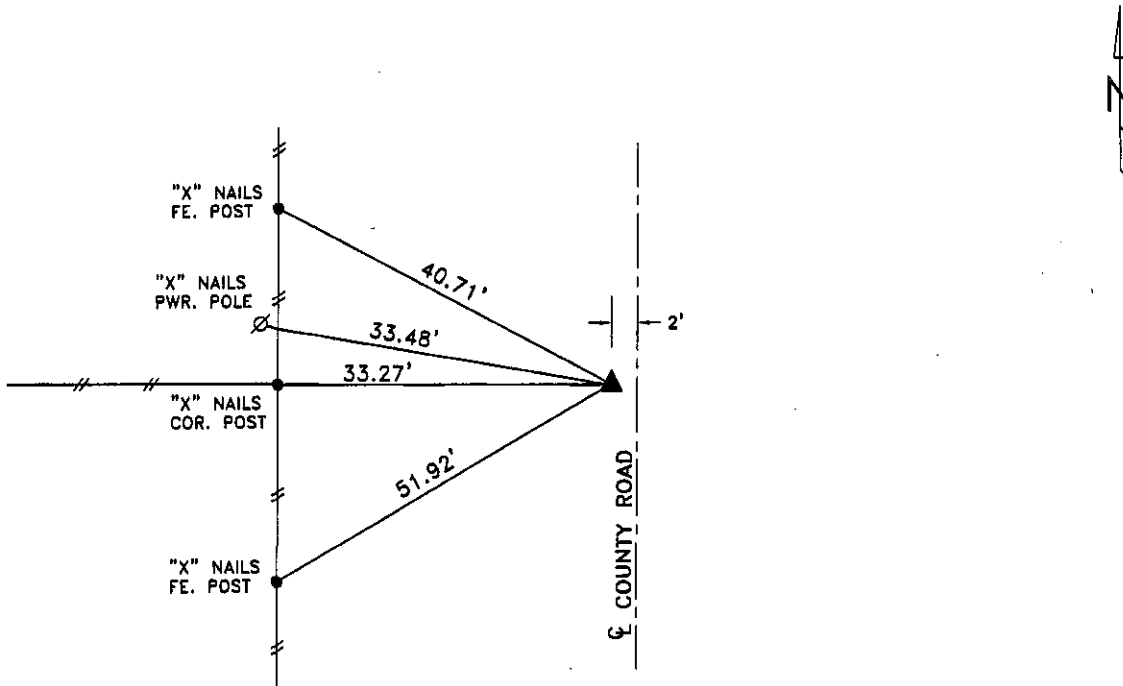
LAND SURVEY MONUMENT SITUATED IN SECTION 5, T 84 N, R 39 W OF  
THE 5TH P.M., CRAWFORD COUNTY, IOWA.  
PREVIOUSLY RECORDED IN BOOK \_\_\_\_\_, PAGE \_\_\_\_\_, OTHER \_\_\_\_\_

### MONUMENT DESCRIPTION AND REMARKS

E1/4 CORNER - FOUND 5/8" DIA. IRON PIN 8" DEEP OVER CM.



PLAN VIEW SHOWING RELATIVE LOCATION OF MONUMENT AND REFERENCE POINTS.



DISTANCES PLUMB CHAINED

E1/4 CORNER SECTION 5-84-39

I HEREBY CERTIFY THAT THIS LAND SURVEYING DOCUMENT WAS PREPARED AND THE RELATED SURVEY WORK WAS PERFORMED BY ME OR UNDER MY DIRECT PERSONAL SUPERVISION AND THAT I AM A DULY LICENSED LAND SURVEYOR UNDER THE LAWS OF THE STATE OF IOWA.

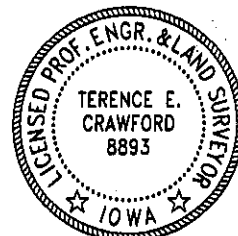
*Terence E. Crawford*  
TERENCE E. CRAWFORD

IA LICENSE NO. 8893

MAR 27 2008

DATE

EXP. DATE DECEMBER 31, 2009



SE PROJECT NO. 21908  
DRAWN BY: LLL