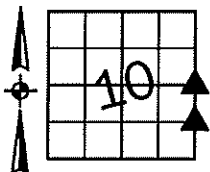


Sara Meseck, RECORDER
 Crawford County, Iowa
 Instr. Number: 2025-2056
 Recorded: 10/22/2025 at 8:43:59.0 AM
 Pages 1
 County Recording Fee: \$7.00
 Iowa E-Filing Fee: \$3.13
 Combined Fee: \$10.13
 Revenue Tax:

PREPARED BY AND RETURN TO: MIKE SCHULTE, SCHULTE SURVEYING, INC., 2003 390TH STREET, WESTSIDE, IA 51467 (712) 790-3489

UNITED STATES PUBLIC LAND SURVEY CORNER CERTIFICATE OF
 LAND SURVEY MONUMENTS SITUATED IN SECTION 10, TOWNSHIP 84 NORTH, RANGE 40 WEST, OF THE FIFTH
 PRINCIPAL MERIDIAN, CRAWFORD COUNTY, IOWA. PREVIOUSLY RECORDED IN SEE BELOW IN COUNTY
 RECORDER'S OFFICE. (book, page instrument number)



SE CORNER NE1/4 SE1/4
 SET 5/8" REBAR YPC #17979

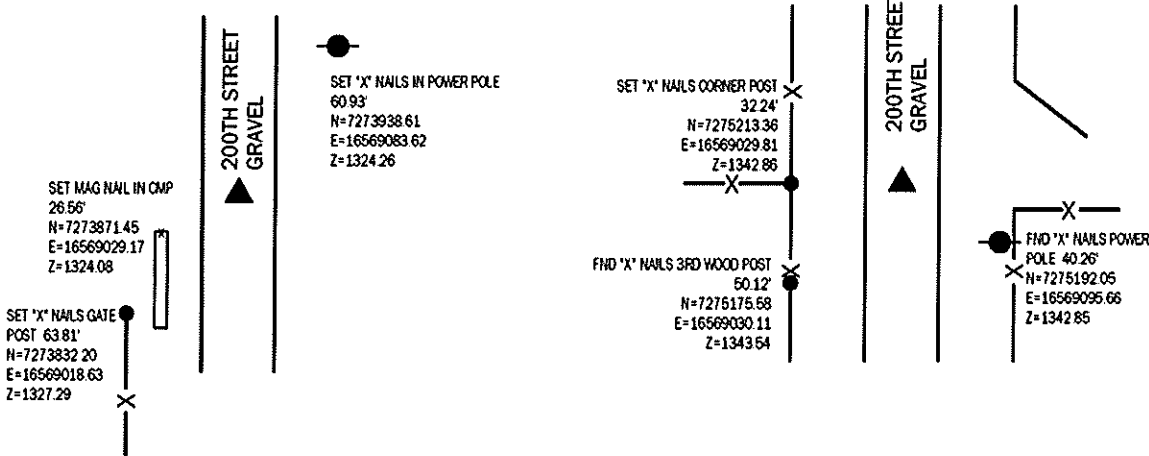
N=7273887.65 E=16569050.22 Z=1324.70

NO RECORD OF CORNER FOUND. CALCULATED POSITION BY
 SINGLE PROPORTION. SEARCHED AREA WITH A METAL LOCATOR,
 FOUND NOTHING. SET 5/8" REBAR YPC #17979 4" DEEP AND
 VERIFIED WITH SURROUNDING FIELD EVIDENCE.
 THIS CERTIFICATE IS BEING FILED DUE TO NONE OF RECORD.

E1/4 CORNER
 FND 1/2" REBAR 4" DEEP

N=7275214.20 E=16569062.04 Z=1340.19

USED CERTIFICATE RECORDED IN INSTRUMENT #94-1486 AND A
 METAL LOCATOR TO FIND A 1/2" REBAR 4" DEEP. VERIFIED WITH 2
 REMAINING TIES.
 THIS CERTIFICATE IS BEING FILED TO UPDATE THE REFERENCE TIES.



LIST CORNERS TO BE INDEXED

CORNER	SECTION	TWP	RANGE
E1/4 CORNER	10	84	40
W1/4 CORNER	11	84	40
SE CORNER NE1/4 SE1/4	10	84	40
SW CORNER NW1/4 SW1/4	11	84	40

*All distances are measured horizontally unless noted.

I HEREBY CERTIFY THAT THIS LAND SURVEYING DOCUMENT WAS
 PREPARED BY ME OR UNDER MY DIRECT PERSONAL SUPERVISION AND
 THAT I AM A DULY LICENSED PROFESSIONAL LAND SURVEYOR UNDER
 THE LAWS OF THE STATE OF IOWA.

Mike Schulte
 MIKE SCHULTE
 LICENSE NUMBER 17979
 LICENSE RENEWAL DATE IS DECEMBER 31, 2026
 PAGES COVERED BY THIS SEAL: 1 OF 1



BASIS OF BEARING

IA RGS ZONE 6 - US SURVEY FEET
 IARTRN DERIVED - NAD83(2011) (EPOCH 2010.00)

SCHULTE SURVEYING, INC.

DRAWN BY: SLG
 PROJ NUMBER: 25-062