

10 11 E 4 10. 84.00

Dug 2x4 hole, and found 1 Large rock 18x22.  
 1 1/2" steel pipe of 1' 2" whole brick and brick  
 bats and dip not 2x. 2. Pickets of thin  
 a depth of 31. SET Q.M.  
 Ties from x SPIRES in cor post  
 38.9 S.W. FROM N COR POST  
 30.8 W. . . . . TIE PHONE BIL  
 33.5 N. . . . .  
 31.6 E FROM COR POST  
 (OLD TIES)

3  
 16

N 4.10 84.00  
 Dug 3x4 hole DID NOT FIND CORNER  
 ESTABLISHED COR AND SET Q.M. 7-20-37

Notes dated reworked notes.

TIES FROM X SPIRES IN COR POSTS  
 31.6 S FROM TULLIHANE POLE  
 32.1 S.S.E. FROM AC POST W  
 34.2 N. FROM COR POST  
 2nd Post N. 4.6 x SPIRES  
 COR. 15 R.O. W of Line of Fence  
 From North

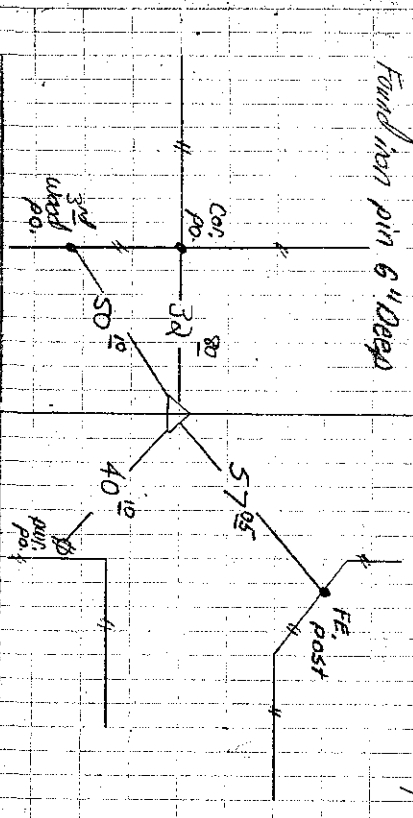
7-10-39 Tied from Sec.

Cor. Cert. 5-24-94

Found iron pin 6" deep

FOUND 7-10-39

Found City 20" deep  
 6-21-76 Re-tied Rebar  
 1/2" rebar over 4 in. 8" deep



8-29-E  
 8-27-5  
 June 24 1954  
 O.K.

ESTABLISHED 7-20-37  
 FOUND 6-24-09 1/2" rebar  
 1' deep RETIED B. JOHNSON  
 R. HALBUR

1st WOOD POST  
 NEST 1/2" NAILS TOP

WOOD CORNER POST  
 1/2" NAILS TOP

WOOD POST WITH  
 1/2" NAILS TOP