

INDEXED
 FOLLOW UP
 PROCESSED
 22
 7

Crawford County Recorder
 Denise Meeves
Fee Book 2013-1641
 07/12/2013 @ 11:38AM
 PLC: PLAT CORNER CER
 Book: Page: # Pages: 1
 Total Fees: \$7.00

PREPARED BY - JAMES C. SAILER - IDOT, P.O.B. 987, SIOUX CITY IOWA 51102-0987 PHONE (712) 276-1451



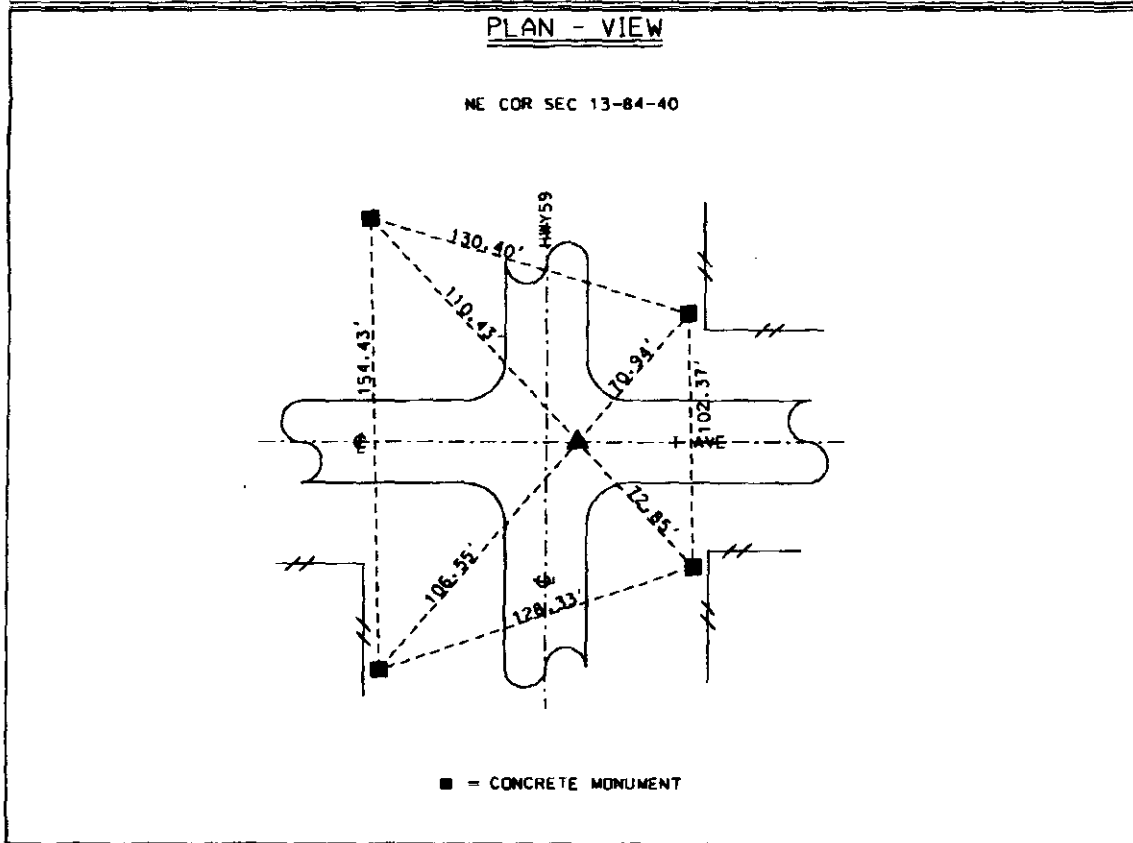
UNITED STATES PUBLIC LAND SURVEY CORNER CERTIFICATE
 OF



Land Survey Monument Situated in Section 13,
 Township 84 NORTH, Range 40 WEST Of The Fifth Principal Meridian,
 CRAWFORD County, Iowa. Previously Recorded In _____
 In The County Recorders Office.

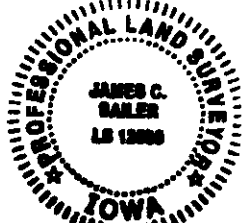
Monument Description and Remarks:

NE CORNER SEC 13-84-40. FOUND IDOT ALUM. DISK IN ACC. SET IDOT BRONZE DISK W/ A CUT TRIANGLE
 IN NEW ASPHALT OVERLAY



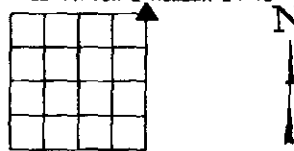
I hereby certify that this land surveying document was prepared and the related survey work was performed by me or under my direct personal supervision and that I am a duly licensed Professional Land Surveyor under the Laws of the State of Iowa.

Signature: James C. Sailer 7/10/13 Date
 James C. Sailer - Lisc. No. 12090



My License Renewal
 Date is December 31, 2014
 Pages or sheets covered by this seal: 1

IOWA DEPARTMENT OF TRANSPORTATION
 CRAWFORD COUNTY FIELD BOOK 1, PAGE 97
 CERTIFICATE NUMBER 24-15



Corner	Section	Twp	Range
NE	13	84	40