

INDEXED
 FOLLOW UP
 PROOFED
 SCANNED

Instrument #: 2014-1061
 05/29/2014 10:22:05 AM Total Pages: 1
 PLC PLAT CORNER CER
 Recording Fee: \$7.00 Transfer Tax: \$0
 Denise Meeves, Recorder, Crawford County Iowa



WILKE LAND SURVEYING INC. 401 1800th Street Panama, Iowa 51562 (712)489-2898

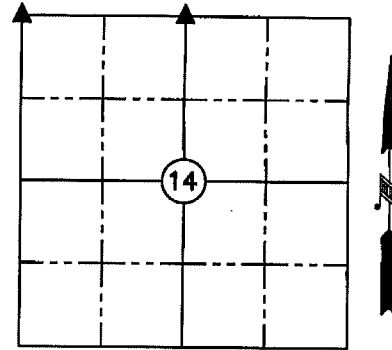
UNITED STATES PUBLIC LAND SURVEY CORNER CERTIFICATE

SECTION 14 TOWNSHIP 84N RANGE 40W COUNTY CRAWFORD
 Reason for Certificate: (No record Certificate)

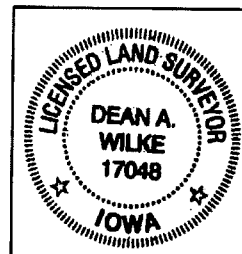
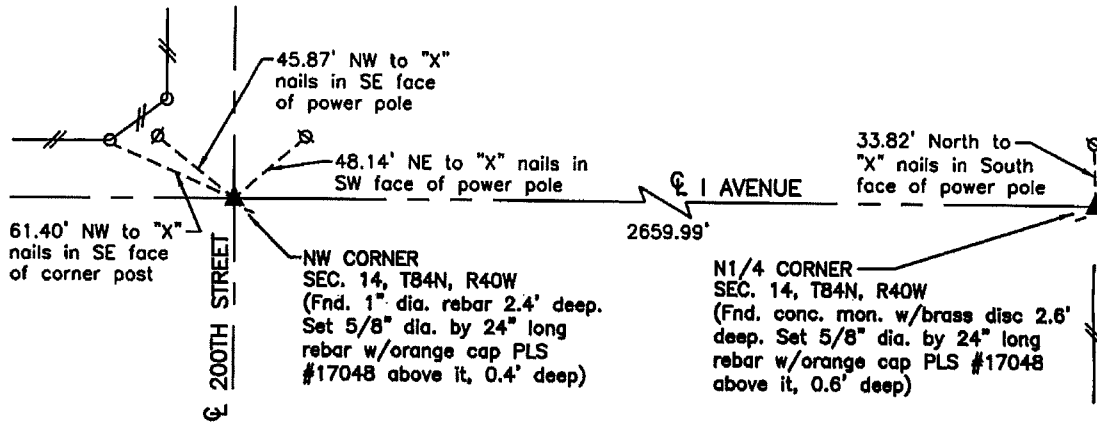
Monument Description and Remarks:

NW CORNER - Found 1" diameter rebar 2.4' deep in county road intersection using ties from the Crawford County Engineer's Office. Set 5/8" diameter by 24" long rebar with orange cap PLS #17048 above it, 0.4' deep.

N1/4 CORNER - Found 1/2" diameter rebar flush with gravel road. Probed next to rebar and hit concrete monument. Dug and found concrete monument 2.6' deep. Set 5/8" diameter by 24" long rebar with orange cap PLS #17048 above it, 0.6' deep. Monument is in line with fence to the South.



ALL DISTANCES ARE HORIZONTAL



I hereby certify that this land surveying document was prepared and the related survey work was performed by me or under my direct personal supervision and that I am a duly licensed Land Surveyor under the laws of the State of Iowa.

Dean A. Wilke 5/27/14
 Dean A. Wilke Date

License number 17048
 My license renewal date is December 31, 2015
 Pages or sheets covered by this seal: This page only

List Corners to be Indexed			
Corner	Section	Twp.	Range
NW CORNER	14	84N	40W
N1/4 CORNER	14	84N	40W