

16-15

E 1/4 Cor of Sec 16-24-40

Dug 2' x 6' x 1' hole in line with fences from E & W. Found bricks bats at surface of road. 1 piece of strap iron 3' long to surface of road. Remains of old walnut stake 2 1/2' long 1 1/4" deep
Set C.M.

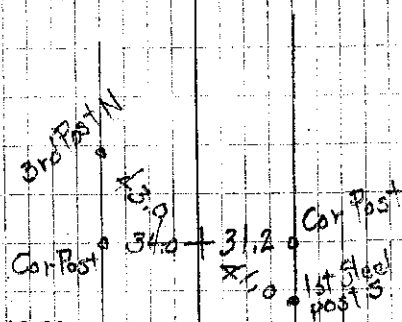
- Ties from X spikes in cor posts
- 34.0 E from Cor post
 - 43.0 SE from 3d post N
 - 31.2 W from Cor. post
 - 41.0 NW from 1st Steel post S

19-20 Set C.M. on line at Midpoint, Agrees with 1/4 fence West of Creek made bend in rd. at this place. More data needed here

- Ties from X spikes in box elders
- 24.9 NE of box elder
 - 29.7 E of cor. post
 - 39.6 SE of box elder
 - 77.2 SW of box elder
 - 46.6 NW of box elder

Notes Stammer
Found 7-12-39

7-70F

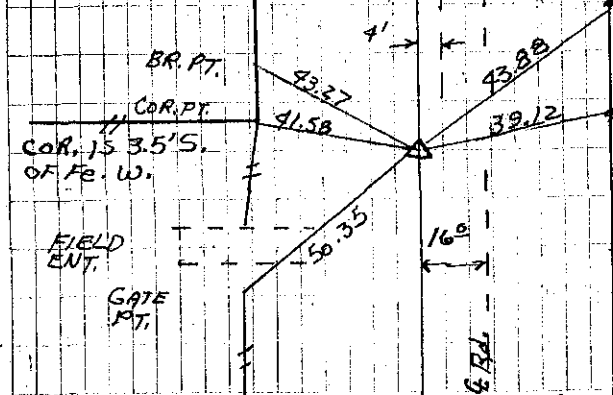


at Mar. 20, 1950

See Page 78
For McKown
ties 2/19/75

103-7-S
14-47-S
ESTAB

ALL TIES ARE
'X' NAILS



FE PT.
TOP

FC PT.

6-11-97

FOUND CM BROKEN
OFF 3.5' DEEP
SET 1/2" REBAR
6" DEEP OVER
IT. BERNDT
CLAREX

1 1/2
1/3
No. 1
No. 2
No. 3
No. 4
No. 5
No. 6
No. 7
No. 8
No. 9
No. 10
No. 11
No. 12
No. 13
No. 14
No. 15
No. 16
No. 17
No. 18
No. 19
No. 20

in line with tie from S
Found 5/2
10/11/50

Ties from X-spks

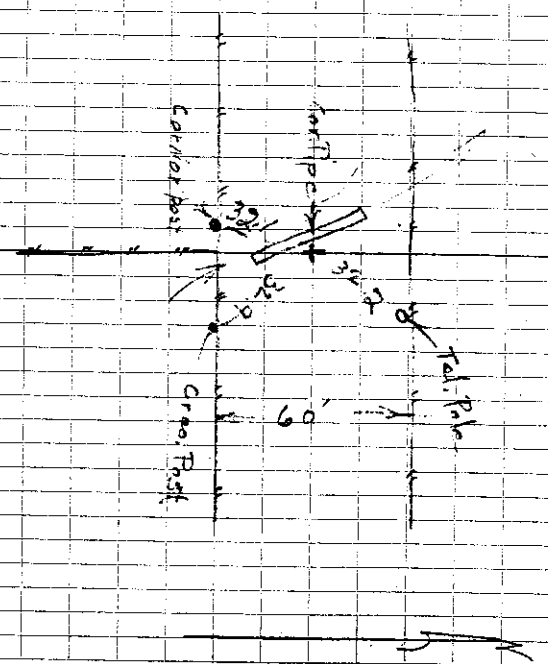
- 32.1 N E From ...
- 32.2 W W " " " "
- 30.7 " " " " " "
- 2.0 East " Cor ...

16 + 15

Ties from "X" nails

No mention of finding actual cm.

Set June 7 1940



21/9/75 Found

Iron Pin Flush

McKewen Crank

(Ties from "X" nails)

