

FILED IN DEPT. OF REVENUE, IOWA
 DEPT. OF REVENUE, IOWA COUNTY
 2001 MAY 18 AM 10:05
 INST. NO. 2001-1348
 DENISE NEWEY, RECORDER
Denise Newey
 REC. 6.00

INDEXED
 FILED IN
 DEPT. OF REVENUE
 IOWA COUNTY

WARDER C. HILLHOUSE, JR. MHE ENGINEERING P.C. 300 W. MCKINLEY JEFFERSON, IA. (515)386-4101

UNITED STATES PUBLIC LAND SURVEY CORNER CERTIFICATE OF

Land Survey Monuments in Section 1, Township 84, Range 40, of the Fifth Principal Meridian, CRAWFORD County, Iowa.

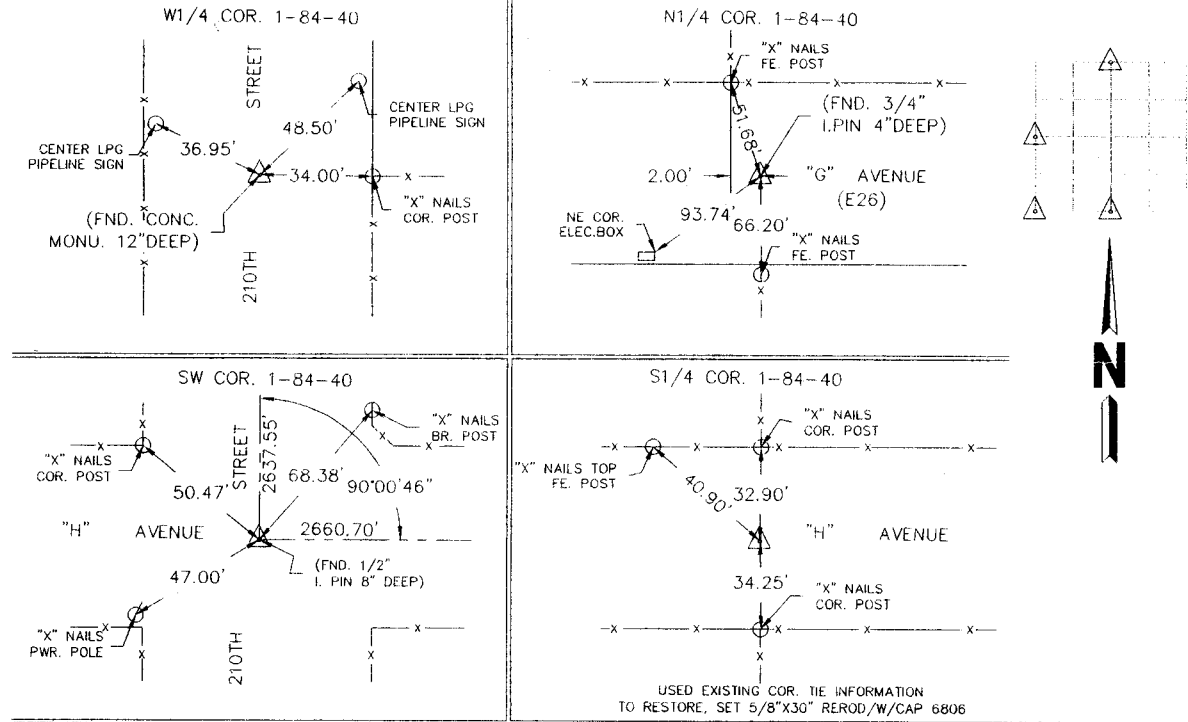
Previously recorded in _____ in County Recorder's Office.
 (book, page, document number, etc.)

(Show reason for preparing this certificate, the evidence and detailed procedures used in establishing the corner positions and monumentation found or placed.)

Monument Description and Remarks: _____

PLAN - VIEW

(Show a minimum of three reference ties to durable physical objects, relevant monuments and physical conditions that will enable recovery of the corner.)

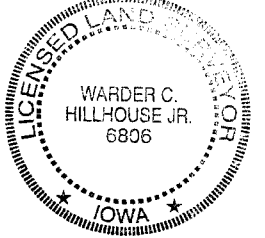


I hereby certify that land surveying document and the related survey work was performed by me or under my direct personal supervision and that I am a duly licensed land surveyor under the laws of the state of Iowa.

Signature: *Warder C. Hillhouse, Jr.*
 Name typed or printed: Warder C. Hillhouse, Jr.

Date: 5/16/01 Lic. No. 6806

License Renewal Dec. 31, 2001
 Date Surveyed: 05/01



List Corners to be Indexed

Corners	Section	Twp	Range
SW COR.	1	84	40
S1/4 COR.	1	84	40
W1/4 COR.	1	84	40
N1/4 COR.	1	84	40
SE COR.	2	84	40
E1/4 COR.	2	84	40
NW COR.	12	84	40
N1/4 COR.	12	84	40
S1/4 COR.	36	85	40

File No. 01068-1

MHE M.H.F. ENGINEERING, P.C.
 ENGINEERS - LAND SURVEYORS
 Jefferson, Iowa 50129 Ph. (515)386-4101