

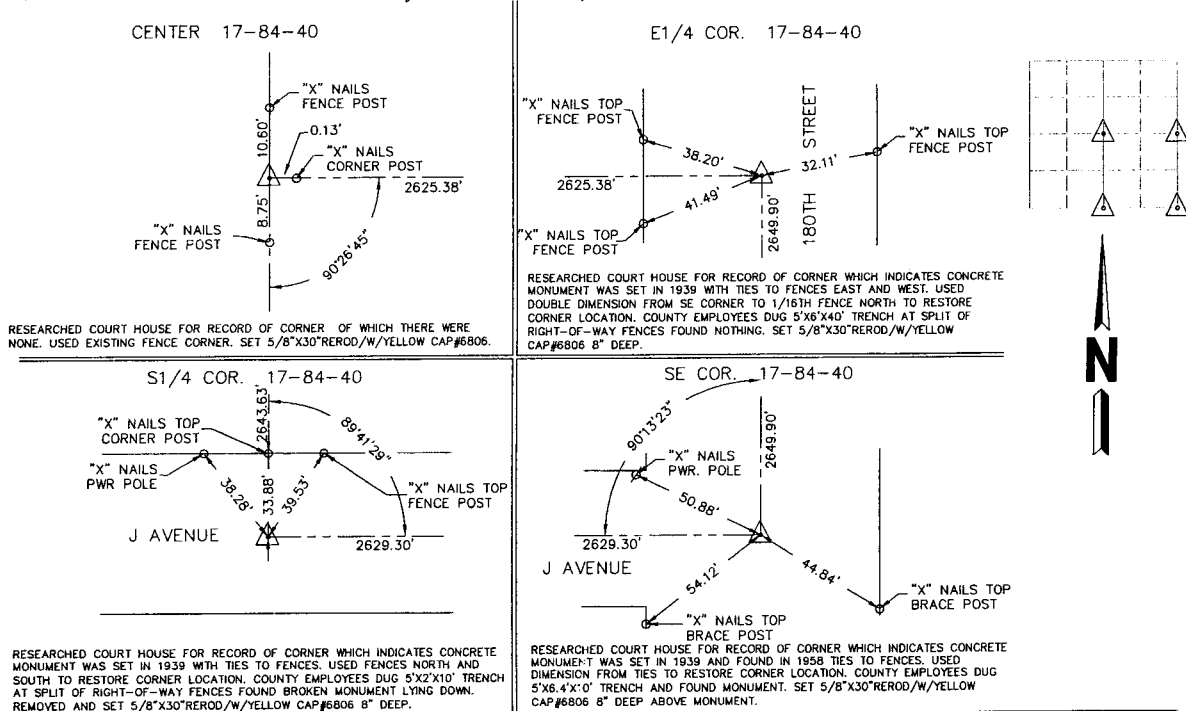
2003 APR 24 AM 10:00  
INST. NO. **2003-1508**  
DENISE NEEVES, RECORDER  
*Denise Neeves*  
FEE \$ 6.00

WARDER C. HILLHOUSE, JR. MHF ENGINEERING P.C. 300 W. MCKINLEY JEFFERSON, IA. (515)386-4101

**UNITED STATES PUBLIC LAND SURVEY CORNER CERTIFICATE OF**  
Land Survey Monuments in Section 17, Township 84, Range 40, of the Fifth Principal Meridian, CRAWFORD County, Iowa.  
Previously recorded in \_\_\_\_\_ in County Recorder's Office.  
(book, page, document number, etc.)  
(Show reason for preparing this certificate, the evidence and detailed procedures used in establishing the corner positions and monumentation found or placed.)  
Monument Description and Remarks: CORNERS LOCATED FOR SURVEY WORK IN SECTION.

**PLAN - VIEW**

(Show a minimum of three reference ties to durable physical objects, relevant monuments and physical conditions that will enable recovery of the corner.)



I hereby certify that land surveying document and the related survey work was performed by me or under my direct personal supervision and that I am a duly licensed land surveyor under the laws of the state of Iowa.

Signature: *Warder C. Hillhouse, Jr.*  
Name typed or printed: Warder C. Hillhouse, Jr.

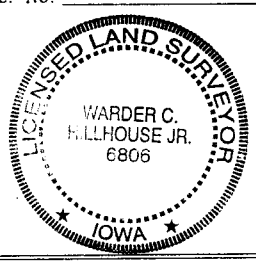
Date: 4/22/03 Lic. No. 6806

License Renewal Dec. 31, 2003  
Date Surveyed: 04/17/03

List Corners to be Indexed

Corners	Section	Twp	Range
CENTER	17	84	40
E1/4 COR.	17	84	40
SE COR.	17	84	40
S1/4 COR.	17	84	40

Seal



File No. 03038-1

**M.H.F. ENGINEERING, P.C.**  
ENGINEERS - LAND SURVEYORS  
Jefferson, Iowa 50129 Ph. (515)386-4101