

INDEXED
 FILED BY DM
 RECORDED

FILED DENISON, IOWA
 CRAWFORD COUNTY

2003 JUL 25 AM 9:27

INST. NO. 2003-2833
 DENISE MEEVES, RECORDER
Denise Meeves
 FEE 11.00

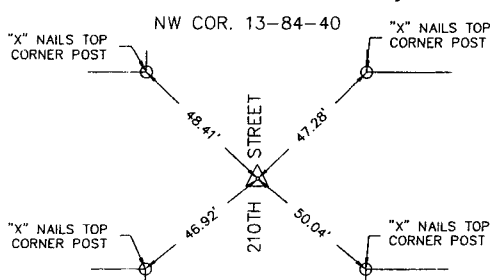
WARDER C. HILLHOUSE, JR. MHF ENGINEERING P.C. 300 W. MCKINLEY JEFFERSON, IA. (515)386-4101
UNITED STATES PUBLIC LAND SURVEY CORNER CERTIFICATE OF
 Land Survey Monuments in Section 13, Township 84, Range 40,
 of the Fifth Principal Meridian, CRAWFORD County, Iowa.
 Previously recorded in _____ in County Recorder's Office.
 (book, page, document number, etc.)

(Show reason for preparing this certificate, the evidence and detailed procedures used in establishing the corner positions and monumentation found or placed.)

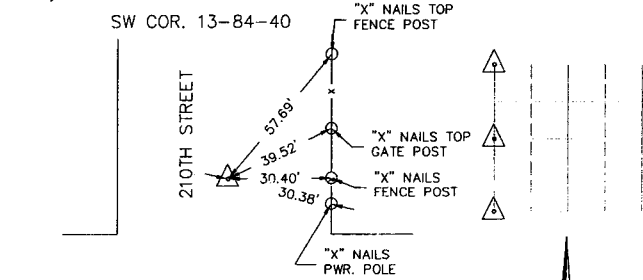
Monument Description and Remarks: CORNERS LOCATED FOR SURVEY WORK IN SECTION.

PLAN - VIEW

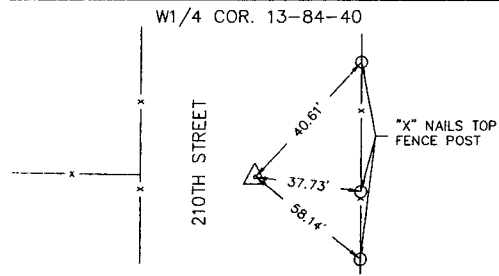
(Show a minimum of three reference ties to durable physical objects, relevant monuments and physical conditions that will enable recovery of the corner.)



RESEARCHED TIES AT ENGINEER'S OFFICE WHICH INDICATE IRON PIN ABOVE CONCRETE MONUMENT IN 1961. DUG AND FOUND 1/2" IRON PIN (6" DEEP).



RESEARCHED TIES AT ENGINEER'S OFFICE WHICH INDICATE CONCRETE MONUMENT (18" DEEP). DUG AND FOUND CONCRETE MONUMENT (10" DEEP).



RESEARCHED TIES AT ENGINEER'S OFFICE WHICH DIDN'T INDICATE WHAT WAS SET, BUT DID INDICATE CORNER LOCATED NEAR CENTER OF R.O.W. DUG AND FOUND NOTHING. USED SPLIT OF R.O.W. AND FENCE LINE WEST TO RESTORE CORNER LOCATION. SET 5/8"X30" REROD/W/YELLOW CAP 6806.



I hereby certify that land surveying document and the related survey work was performed by me or under my direct personal supervision and that I am a duly licensed land surveyor under the laws of the state of Iowa.
 Signature: Warder C. Hillhouse, Jr.
 Name typed or printed: Warder C. Hillhouse, Jr.
 Date: 7/23/03 Lic. No. 6806
 License Renewal Dec. 31, 2003
 Date Surveyed: 07/10/03



Seal

List Corners to be Indexed

Corners	Section	Twp	Range
NW COR.	13	84	40
W1/4 COR.	13	84	40
SW COR.	13	84	40

File No. 03135-1

M.H.F. ENGINEERING, P.C.
 ENGINEERS - LAND SURVEYORS
 Jefferson, Iowa 50129 Ph. (515)386-4101