

25-30

This car has recently been graded and by all indications has been lost. About 9 A.M. at this point Estb. cor by local evidence from old & wide long Willow ridge road at this point. Set C.M. point between fences. C.M. about 18 feet. Lines from ...

31.8	E	from cor post to NW
38.5	E	2nd post W
33.6	NE	5 yard post
22.0	W	cor post to C.M.
33.0	W	cor post to E

24

Bug trench 2' wide and 2' deep across road and in line with fence. Found Nothing. Set on old S.E. fence line. More data needed here.

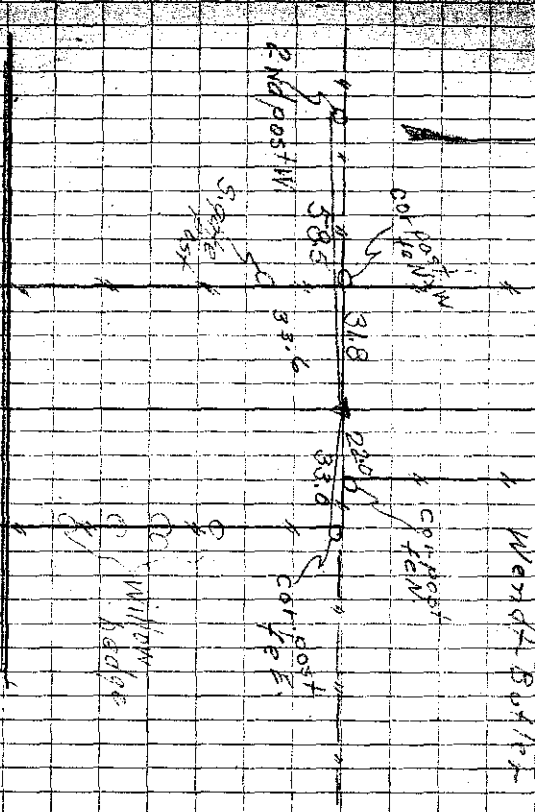
Ties from x-sps

28.0	NW	from Tel. pole
29.9	SW	from Wood post N 5'
27.5	SW	from Tel. pole
69.0	SW	from Tel. pole

Estb. 5-19-41 by D.L. Thomas

51

3-10-5



3-365

Dug 4-10-39

Sit down 7/1940 Cherry

