

97 APR 23 PM 2:37

INDEXED *sm*
FOLLOW UP *sm*
PROOFED *sm*

INST. NO. *97-1049*
DENISE NEEVES, RECORDER
Denise Neeves
FEE *6.00*

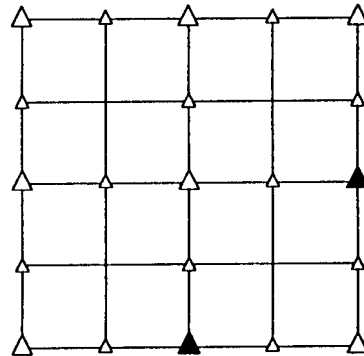
PREPARED BY - TERENCE E. CRAWFORD - SUNDQUIST ENGINEERING - 120 S. MAIN DENISON, IOWA 51442 - PHONE (712)263-8118

UNITED STATES PUBLIC LAND SURVEY CORNER CERTIFICATE OF

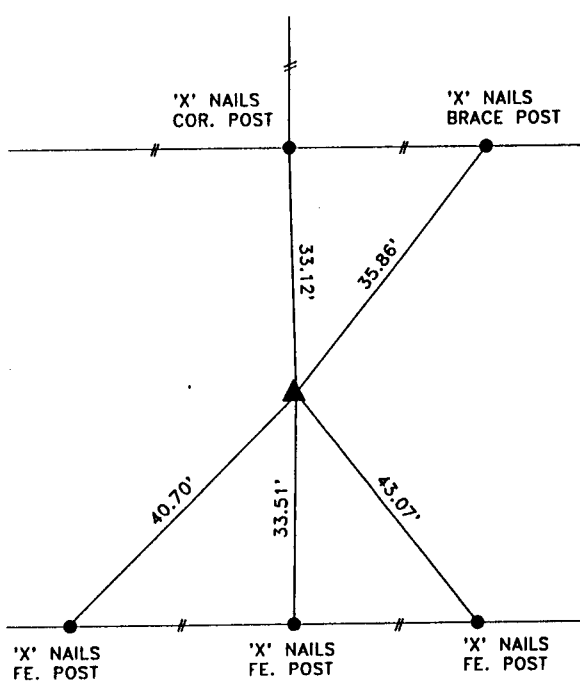
LAND SURVEY MONUMENT SITUATED IN SECTION 23 ; T 84 N, R 40 W OF
THE 5TH P.M., CRAWFORD COUNTY, IOWA.
PREVIOUSLY RECORDED IN BOOK _____, PAGE _____, OTHER _____

MONUMENT DESCRIPTION AND REMARKS

- S1/4 CORNER - FOUND BROKEN CM 2' DEEP, RAISED WITH 5/8" IRON PIN W/CAP #8893 TO 5" DEEP
- E1/4 CORNER - RESET WITH 5/8" IRON PIN W/CAP #8893 1' DEEP SET FROM OLD TIES INFORMATION

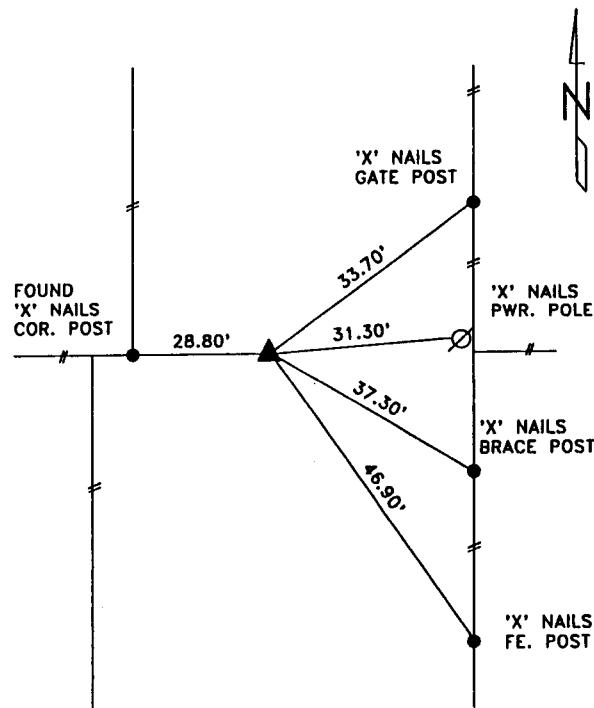


PLAN VIEW SHOWING RELATIVE LOCATION OF MONUMENT AND REFERENCE POINTS.



DISTANCES PLUMB CHAINED

S1/4 CORNER SECTION 23-84-40



DISTANCES PLUMB CHAINED

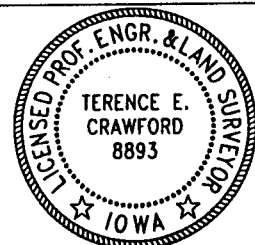
E1/4 CORNER SECTION 23-84-40

I HEREBY CERTIFY THAT THE SURVEY WORK WAS COMPLETED AND THIS LAND SURVEYING DOCUMENT WAS PREPARED BY ME OR UNDER MY DIRECT PERSONAL SUPERVISION AND THAT I AM A DULY LICENSED LAND SURVEYOR UNDER THE LAWS OF THE STATE OF IOWA.

Terence E. Crawford 4-11-97
TERENCE E. CRAWFORD DATE

IA LICENSE NO. 8893

EXP. DATE DECEMBER 31, 1997



SE PROJECT NO. 2117