

PLAT CORNER CER
 PLAT CORNER CER
 PLAT CORNER CER

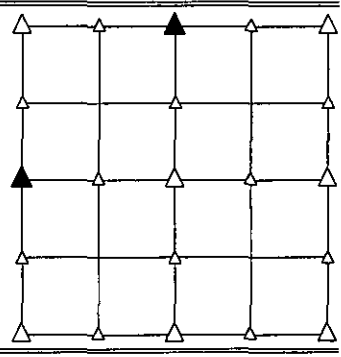
PREPARED BY - JOSEPH P. RUESCHENBERG - SUNDQUIST ENGINEERING - 120 S. MAIN, DENISON, IOWA 51442 - PHONE (712) 263-8118

UNITED STATES PUBLIC LAND SURVEY CORNER CERTIFICATE
OF

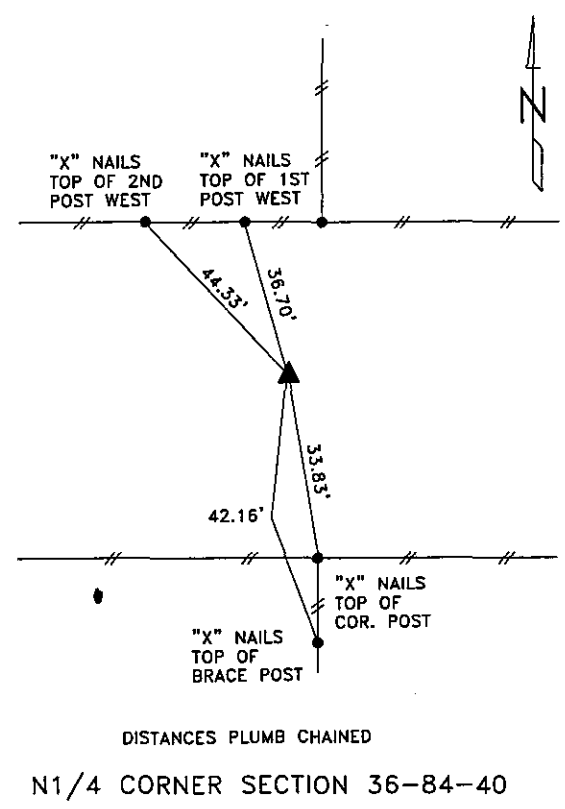
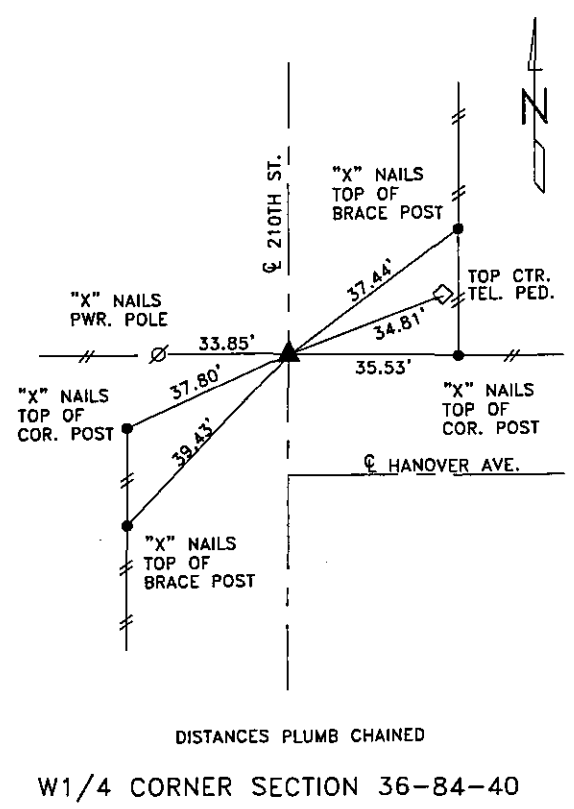
LAND SURVEY MONUMENT SITUATED IN SECTION 36, T 84 N, R 40 W OF
 THE 5TH P.M., CRAWFORD COUNTY, IOWA.
 PREVIOUSLY RECORDED IN BOOK _____, PAGE _____, OTHER _____

MONUMENT DESCRIPTION AND REMARKS

W1/4 CORNER - SET 5/8" DIA. X 18" IRON PIN W/ORANGE CAP #14709 0.4' DEEP, RESET CORNER FROM OLD COUNTY ROAD PLANS.
 N1/4 CORNER - SET 5/8" DIA. X 18" IRON PIN W/ORANGE CAP #14709 0.4' DEEP, RESET CORNER FROM LOCAL EVIDENCE.



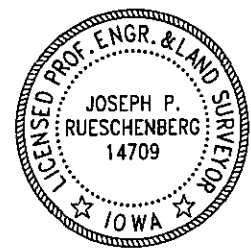
PLAN VIEW SHOWING RELATIVE LOCATION OF MONUMENT AND REFERENCE POINTS.



I HEREBY CERTIFY THAT THIS LAND SURVEYING DOCUMENT WAS PREPARED AND THE RELATED SURVEY WORK WAS PERFORMED BY ME OR UNDER MY DIRECT PERSONAL SUPERVISION AND THAT I AM A DULY LICENSED LAND SURVEYOR UNDER THE LAWS OF THE STATE OF IOWA.

Joseph P. Rueschenberg
 JOSEPH P. RUESCHENBERG
 IA LICENSE NO. 14709

SEP 15 2009
 DATE
 EXP. DATE DECEMBER 31, 2010



SE PROJECT NO. 20509
 DRAWN BY: LLL