

1080
SEARCHED
INDEXED
SERIALIZED

Prepared by: Nathan H. Carlson Address: 3701 12th Street N, Suite 206, Phone: 320-253-9495
St. Cloud, MN 56303

UNITED STATES PUBLIC LAND SURVEY CORNER CERTIFICATE FOR

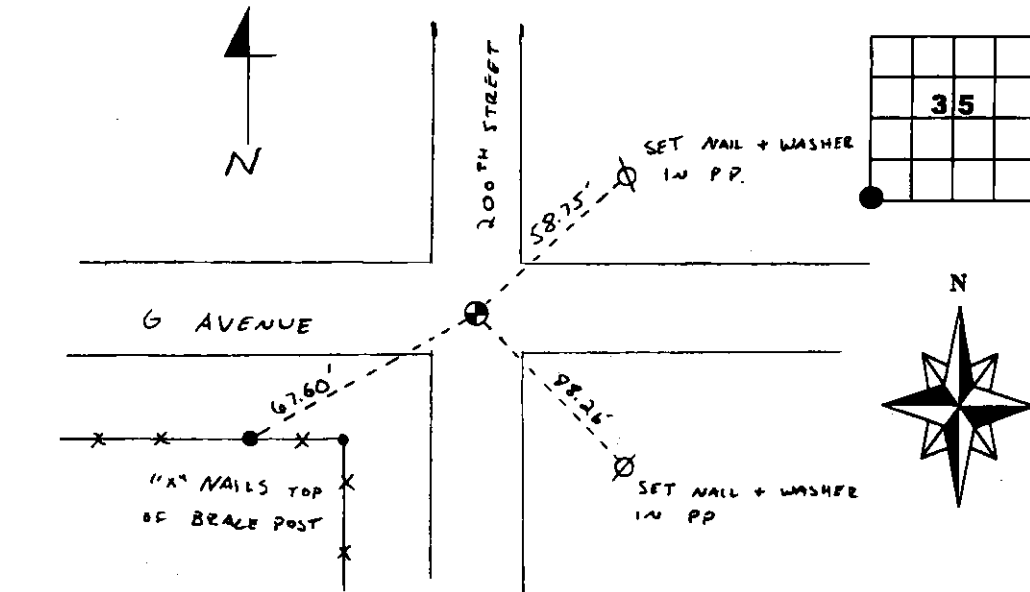
Land survey monuments situated in Section 35, Township 85N
Range 40W, of the Fifth Principal Meridian, Crawford County, Iowa.
Previously recorded in document no. 2007-0096 in County Recorder's Office.

(Show reasons for preparing this certificate, the evidence and detailed procedures used in establishing the corner positions & monumentation found or placed.)

MONUMENT DESCRIPTION AND REMARKS: Searched with a metal locator and found
1" diameter iron pin at centerline/centerline. Corner agrees with position
reported by Terence C. Crawford per Doc. No. 2007-0096. Updated reference
ties.

PLAN - VIEW

(Show a minimum of three reference ties to durable physical objects, relevant monuments and physical conditions that will enable recovery of the corner.)



SEAL



I hereby certify that this land surveying document was prepared and the related survey work was performed by me or under my direct personal supervision and that I am a duly licensed Land Surveyor under the laws of the State of Iowa.

Nathan H. Carlson 1/4/2012
Signature Date

Typed/Printed Name: Nathan H. Carlson

License Number: 19314

My license renewal date is December 31, 2012

Pages or sheets covered by this seal: This sheet

Corners to be Indexed

Corners	Section	Twp.	Range
SW	35	85N	40W