

INDEXED
 FOLLOW UP
 PROOFED
 SCANNED

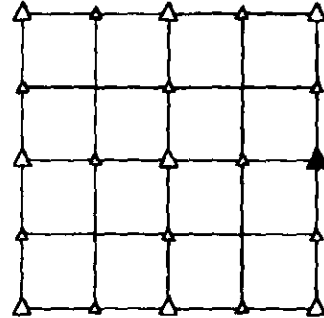
PREPARED BY - JOSEPH P. RUESCHENBERG - SUNDQUIST ENGINEERING - 120 S. MAIN, DENISON, IOWA 51442 - PHONE (712) 263-8118

UNITED STATES PUBLIC LAND SURVEY CORNER CERTIFICATE
OF

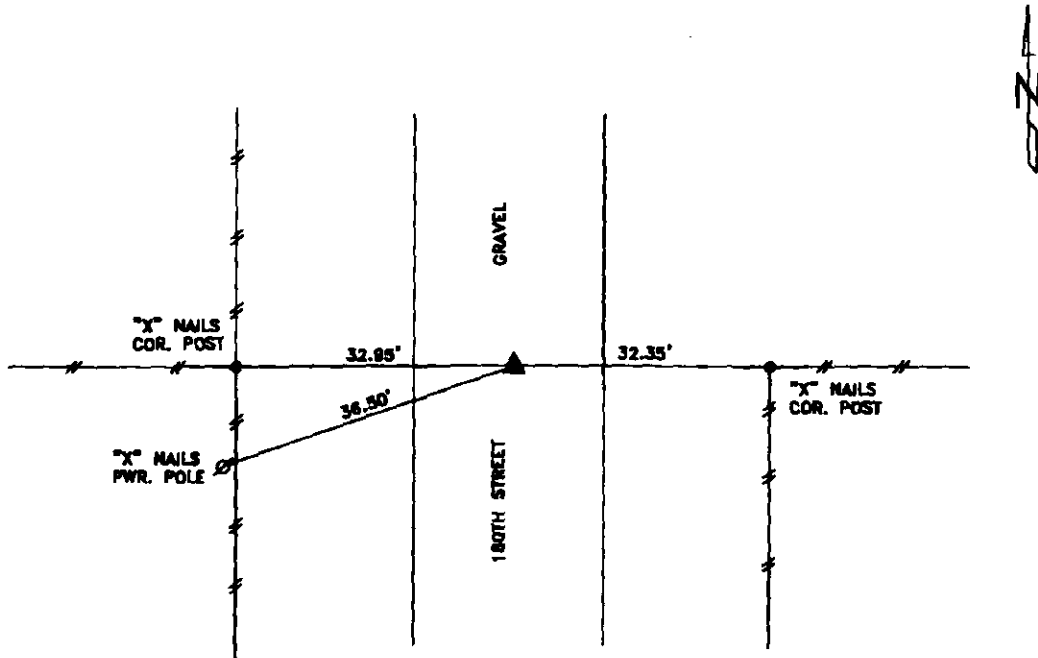
LAND SURVEY MONUMENT SITUATED IN SECTION 5, T 84 N, R 40 W OF
 THE 5TH P.M., CRAWFORD COUNTY, IOWA.
 PREVIOUSLY RECORDED IN BOOK _____, PAGE _____, OTHER _____

MONUMENT DESCRIPTION AND REMARKS

E1/4 CORNER - FOUND CM 3.0' DEEP, SET 5/8" DIA. IRON PIN ON
 NORTH SIDE OF CM 3.0' DEEP. SET 5/8" DIA. X
 18" IRON PIN W/ORANGE CAP #14709 0.4' DEEP
 OVER CM.



PLAN VIEW SHOWING RELATIVE LOCATION OF MONUMENT AND REFERENCE POINTS.



DISTANCES PLUMB CHAINED

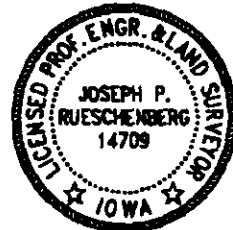
E1/4 CORNER SECTION 5-84-40

I HEREBY CERTIFY THAT THIS LAND SURVEYING DOCUMENT WAS PREPARED
 AND THE RELATED SURVEY WORK WAS PERFORMED BY ME OR UNDER MY
 DIRECT PERSONAL SUPERVISION AND THAT I AM A DULY LICENSED LAND
 SURVEYOR UNDER THE LAWS OF THE STATE OF IOWA.

Joseph P. Rueschenberg 9-13-2013
 JOSEPH P. RUESCHENBERG DATE

IA LICENSE NO. 14709

EXP. DATE DECEMBER 31, 2014



SE PROJECT NO. 22913
 DRAWN BY: LLL