

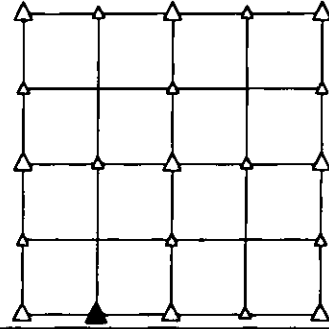
PREPARED BY - TERENCE E. CRAWFORD - SUNDQUIST ENGINEERING - 120 S. MAIN, DENISON, IOWA 51442 - PHONE (712) 263-8118

**UNITED STATES PUBLIC LAND SURVEY CORNER CERTIFICATE
 OF**

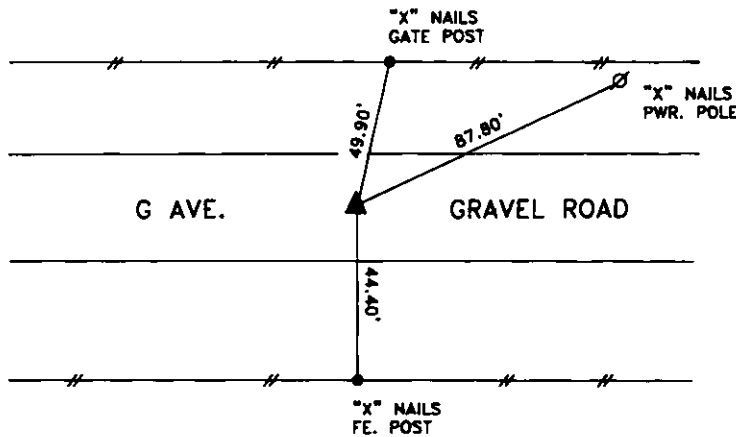
LAND SURVEY MONUMENT SITUATED IN SECTION 31, T 85 N, R 40 W OF
 THE 5TH P.M., CRAWFORD COUNTY, IOWA.
 PREVIOUSLY RECORDED IN BOOK _____, PAGE _____, OTHER _____

MONUMENT DESCRIPTION AND REMARKS

SE CORNER W1/2 SW1/4 - FOUND 60D SPIKE 0.2' DEEP SET BY
 YOCUM IN 1997.



PLAN VIEW SHOWING RELATIVE LOCATION OF MONUMENT AND REFERENCE POINTS.

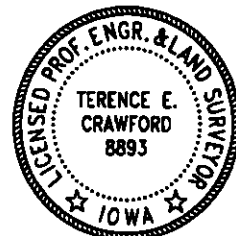


DISTANCES PLUMB CHAINED

SE CORNER W1/2 SW1/4 SECTION 31-85-40

I HEREBY CERTIFY THAT THIS LAND SURVEYING DOCUMENT WAS PREPARED
 AND THE RELATED SURVEY WORK WAS PERFORMED BY ME OR UNDER MY
 DIRECT PERSONAL SUPERVISION AND THAT I AM A DULY LICENSED LAND
 SURVEYOR UNDER THE LAWS OF THE STATE OF IOWA.

Terence E. Crawford 10-11-11
 TERENCE E. CRAWFORD DATE
 IA LICENSE NO. 8893 EXP. DATE DECEMBER 31, 2011



SE PROJECT NO. 24211
 DRAWN BY: LLL