

INDEXED km
 FOLLOW UP km
 PROOFED km
 SCANNED km

Instrument #: 2020-0895
 05/05/2020 09:19:41 AM Total Pages: 1
 PLC PLAT COR CERT
 Recording Fee: \$0.00 Transfer Tax: \$0
 Denise Meeves, Recorder, Crawford County Iowa



PREPARED BY: PAUL ASSMAN-CRAWFORD COUNTY ENGINEER'S OFFICE-COURTHOUSE-DENISON, IA.-712-263-2449

UNITED STATES PUBLIC LAND SURVEY CORNER CERTIFICATE OF

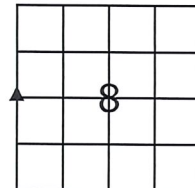
LAND SURVEY MONUMENT SITUATED IN HANOVER TOWNSHIP, THE WEST 1/4 CORNER OF SECTION 8, T-84N,
R-40W OF THE FIFTH P.M. CRAWFORD COUNTY, IOWA.

PREVIOUSLY RECORDED AS NO. 2003-1930

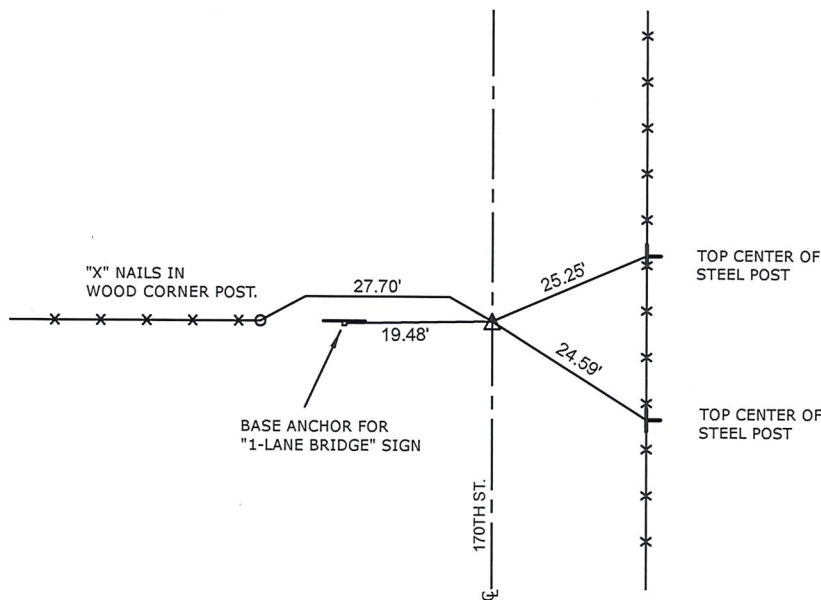
MONUMENT DESCRIPTION AND REMARKS

WEST 1/4 CORNER SEC. 8-84-40

FOUND EXISTING CONCRETE MONUMENT 28" DEEP.
 COUNTY GRADED ROAD AND RESET 5/8" X 18" REBAR
 WITH RED CAP #11982 OVER MONUMENT 10" DEEP AND
 RETIED CORNER.



WEST 1/4 CORNER SEC. 8-84-40



ALL DISTANCES ARE SLOPE CHAINED

CERTIFICATION:

I HEREBY CERTIFY THAT THIS LAND SURVEYING DOCUMENT WAS PREPARED AND THE RELATED SURVEY WORK WAS PERFORMED BY ME OR UNDER MY DIRECT PERSONAL SUPERVISION AND THAT I AM A DULY LICENSED LAND SURVEYOR UNDER THE LAWS OF THE STATE OF IOWA.

Paul J. Assman
 Signature

4/28/20
 Date of Survey

PAUL J. ASSMAN
 Typed Name

11982
 L.S. No.

12-31-20
 License Renewal Date

Pages covered by this seal 1

